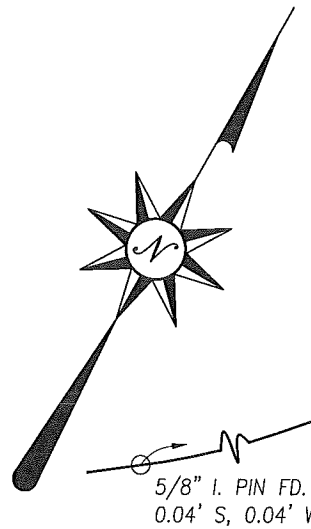


SCALE: 1" = 40'



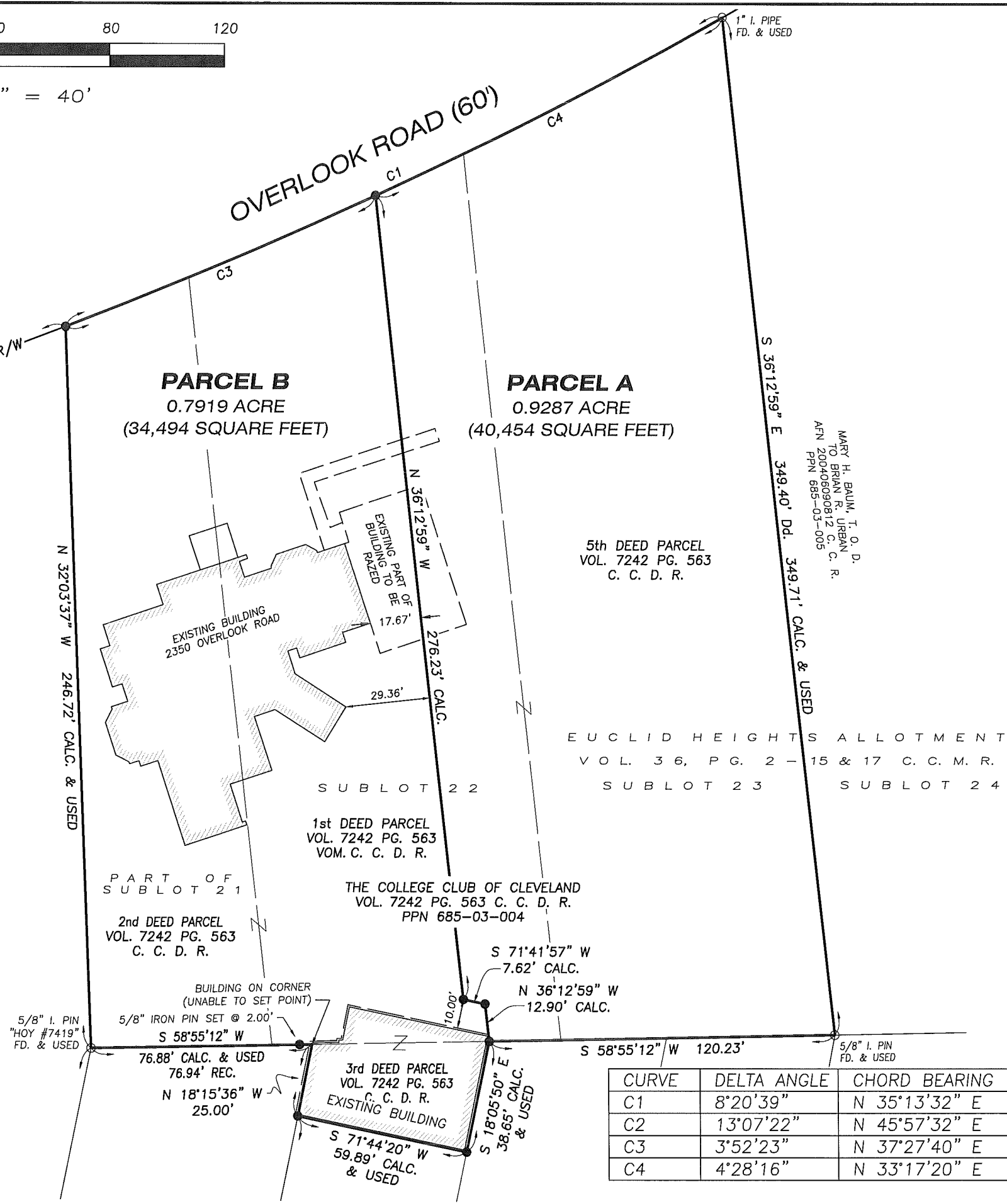
DEMOLITION EXHIBIT FOR THE COLLEGE CLUB OF CLEVELAND, an Ohio non-profit corporation

SITUATED IN THE CITY OF CLEVELAND HEIGHTS, COUNTY OF CUYAHOGA, STATE OF OHIO AND KNOWN AS BEING ALL OF SUBLT NOS. 22 AND 23 AND PART OF SUBLT NOS. 21 AND 30 IN THE EUCLID HEIGHTS ALLOTMENT OF A PART OF ORIGINAL ONE HUNDRED ACRE LOTS NOS. 398, 404, 405 AND 406 AND PART OF ORIGINAL EUCLID TOWNSHIP LOTS NOS. 7 AND 8 AS SHOWN BY THE RECORDED PLAT IN VOLUME 36 OF MAPS, PAGES 2 TO 15 BOTH INCLUSIVE, AND 17 OF CUYAHOGA COUNTY RECORDS.

ABBREVIATIONS

- Dd. - DEED
- MSD. - MEASURED
- ACT. - ACTUAL
- CALC. - CALCULATED
- OBS. - OBSERVED
- TD. - TURNED
- FD. - FOUND
- ENCR. - ENCROACHES
- CLRS. - CLEARS
- ASPH. - ASPHALT
- CONC. - CONCRETE
- SUBJ. - SUBJECT
- CONT. - CONTIGUOUS
- U.G. - UNDERGROUND
- O.H. - OVERHEAD

SUBLT "2A"
 WALDORF PARTNERS RESUBDIVISION
 VOL. 324, PG. 16 C. C. M. R.
 WALDORF PARTNERS LIMITED PARTNERSHIP
 VOL. 86-4566, PG. 60 C. C. R.
 PPN 685-02-002



MARY H. BAUM, T. O. D.
 TO BRIAN R. URBAN
 AEN 200406090612 C. C. R.
 PPN 685-03-005

EUCLID HEIGHTS ALLOTMENT
 VOL. 36, PG. 2 - 15 & 17 C. C. M. R.
 SUBLT 23 SUBLT 24

CURVE	DELTA ANGLE	CHORD BEARING	RADIUS	ARC LENGTH	TANGENT	CHORD LENGTH
C1	8°20'39"	N 35°13'32" E	1737.90'	253.10'	126.77'	252.87'
C2	13°07'22"	N 45°57'32" E	1737.90'	398.04'	199.90'	397.17'
C3	3°52'23"	N 37°27'40" E	1737.90'	117.48'	58.76'	117.46'
C4	4°28'16"	N 33°17'20" E	1737.90'	135.62'	67.84'	135.58'

Drawing File: W:\9000-9099\9038\9038 Exhibit.dwg Aug 31, 2017 - 5:03pm

