

The District is leasing space to three (3) district providers for use in delivering community based mental health services to families that reside within the District residential boundaries. Use of the assigned office space and the assigned parking spaces will be intermittent and based on appointments between the provider and the families. Each office will have one (1) provider only. The services will occur during normal business hours and in the evening, as needed. Parking for the providers and the clients will be in the main parking lot off of Washington Boulevard. The individual providers will be meeting with one (1) family at a time based on needs. The average family size is four (4).

Is this program an existing program and, if so, where is located now and why are you relocating it? Is it expanding from the current use?

This is a new service.

If it is a new program, what need is it addressing?

The physical access to services has been identified by district staff as a barrier for students and families seeking mental health support. This partnership enables us to use existing district space to provide students and their families with greater access to mental health supports. This effort also increases the level of service for the providers by establishing an additional location to meet with students and their families.

What is the benefit of housing this use in Coventry School vs. locating it in a school or at the BOE or other location?

Existing space in schools and BOE is limited and replication of this service across multiple buildings is not feasible. Use of Coventry enables the District to offer the service in a centralized location that also provides access to other district partners such as Reaching Heights, Family Connections and Lake Erie Ink.

Will children be taken out of school for counseling or is this primarily after school hours? If during school hours, how will they be transported to Coventry?

Services will be provided primarily after school. If services are scheduled to occur during the day the student's family will be responsible for transportation.

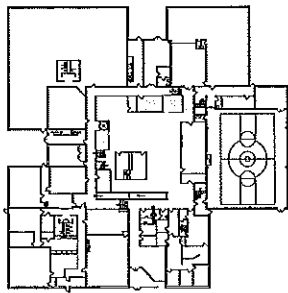
Then there were some more general questions about how you coordinate scheduling and safety/security/separation between the various uses:

How do you maintain separation, security, quiet and privacy between adult uses (Ensemble, FutureHeights, Reaching Heights, etc.) with the many children's uses (Heights Parent Center, Urban Oak, Lake Erie Ink)?

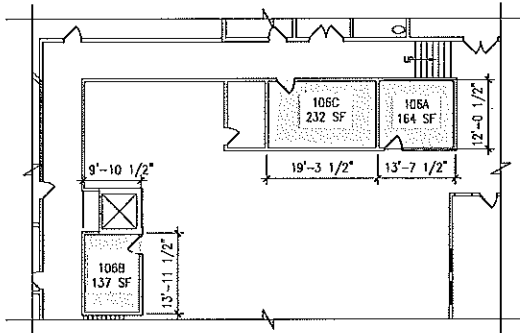
The meeting rooms for the providers are private, closed spaces. Services will be provided by appointment only which will minimize traffic and wait time for families. Providers are aware of the multiple programs occurring in the building and the importance of security and privacy.

15-20
15-20
PROJECT NO.

Plotted: 05/20/2016 10:45:00 AM Job Number: 16113 Date Plotted: 05/20/2016 10:45:00 AM Plot Size: 11.0" x 17.0" Scale: 1/8" = 1'-0"



KEY PLAN - MAIN LEVEL
SCALE: N.T.S.



LEASE OUTLINE DRAWING
SCALE: 1/8" = 1'-0"

SUITE #105 A,B,C
DISTRICT OFFICE SPACE
533 SF

CH-UH COVENTRY SCHOOL

2843 WASHINGTON BOULEVARD
CLEVELAND HEIGHTS, OHIO, 44118

3121 Bridge Avenue
Cleveland, Ohio 44113
Tel: 216-357-2784
Fax: 216-357-2796

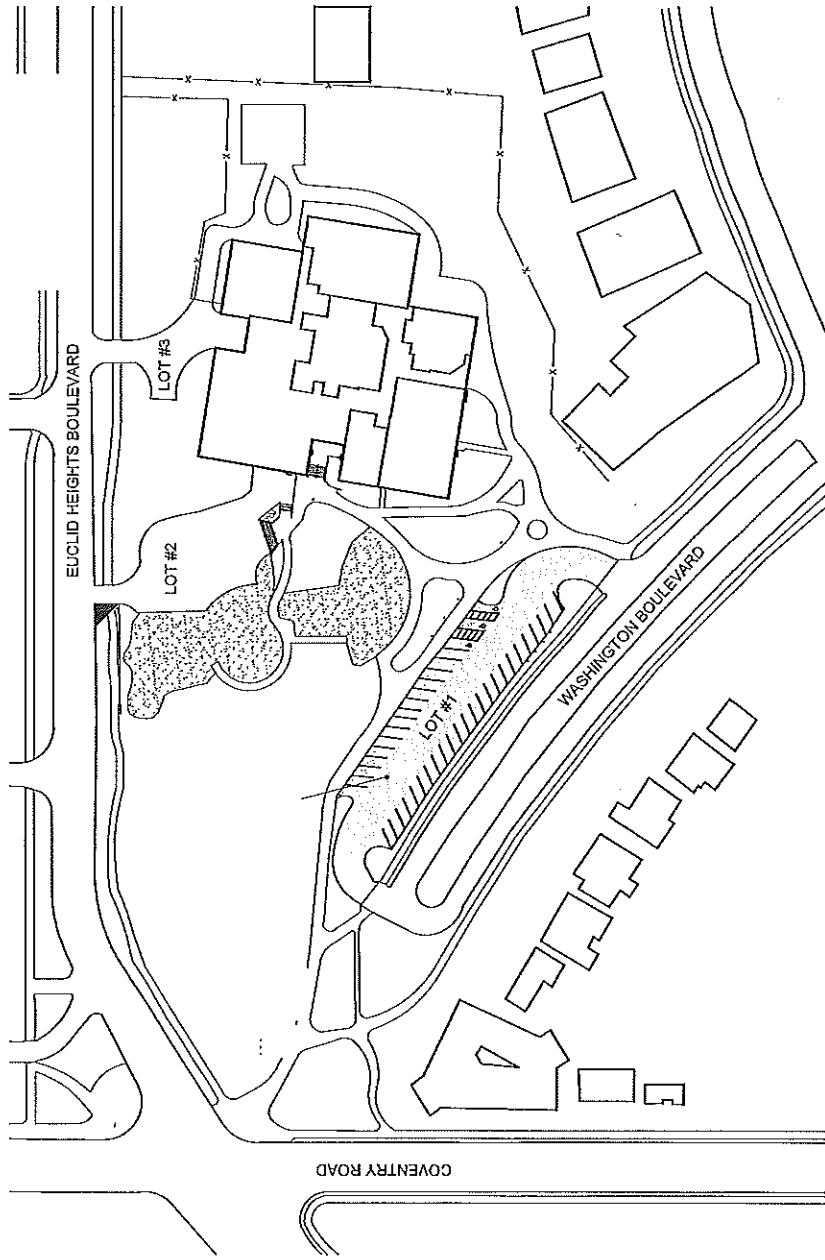
TENANT:
DISTRICT OFFICE SPACE

Sheet 1 of 1

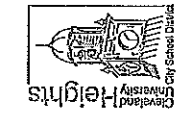
Date: 05.05.2015

THIS DRAWING IS FOR GENERAL INFORMATION PURPOSES ONLY. ANY AND ALL FEATURES, MATTERS AND OTHER INFORMATION DEPICTED HEREON OR CONTAINED HEREIN ARE FOR ILLUSTRATIVE MARKETING PURPOSES ONLY, ARE SUBJECT TO MODIFICATION WITHOUT NOTICE, ARE NOT INTENDED TO BE RELIED UPON BY ANY PARTY AND ARE NOT INTENDED TO CONSTITUTE REPRESENTATIONS OR WARRANTIES AS TO OWNERSHIP OF THE REAL CONSTRUCTED OR THAT ANY IMPROVEMENTS WILL BE CONSTRUCTED OR THE IDENTITY OR NATURE OF ANY OCCUPANTS THEREOF.





SITE PLAN - DEDICATED PARKING
SCALE: 1"=100'-0"



THIS DRAWING IS FOR GENERAL INFORMATION PURPOSES ONLY. ANY AND ALL FEATURES, MATTERS AND OTHER INFORMATION DEPICTED HEREON OR CONTAINED HEREIN ARE FOR ILLUSTRATIVE MARKETING PURPOSES ONLY, ARE SUBJECT TO MODIFICATION WITHOUT NOTICE, ARE NOT INTENDED TO BE RELIED UPON BY ANY PARTY AND ARE NOT INTENDED TO CONSTITUTE REPRESENTATIONS OR WARRANTIES AS TO OWNERSHIP OF THE REAL CONSTRUCTED OR THAT ANY IMPROVEMENTS WILL BE CONSTRUCTED OR THE IDENTITY OR NATURE OF ANY OCCUPANTS THEREOF.

TENANT:

Sheet: 1 of 2

Date: 04.09.2015

CH-UH COVENTRY SCHOOL
2843 WASHINGTON BOULEVARD
CLEVELAND HEIGHTS, OHIO, 44118

K2M DESIGN
3121 Bridge Avenue
Cleveland, Ohio 44113
Tel: 216-357-2794
Fax: 216-357-2796