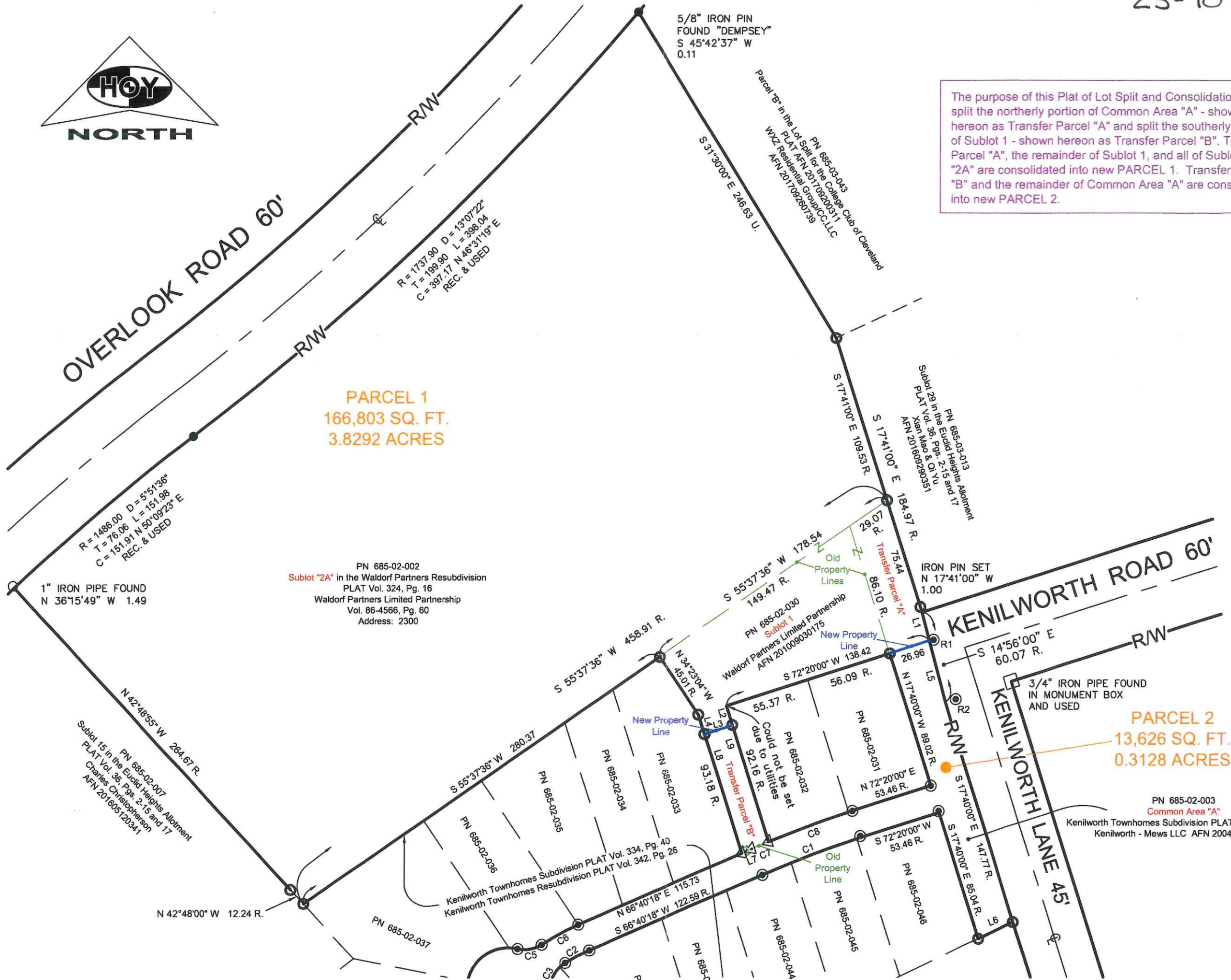




The purpose of this Plat of Lot Split and Consolidation is to split the northerly portion of Common Area "A" - shown hereon as Transfer Parcel "A" and split the southerly portion of Sublot 1 - shown hereon as Transfer Parcel "B". Transfer Parcel "A", the remainder of Sublot 1, and all of Sublot No. "2A" are consolidated into new PARCEL 1. Transfer Parcel "B" and the remainder of Common Area "A" are consolidated into new PARCEL 2.



PARCEL 1
 166,803 SQ. FT.
 3.8292 ACRES

PARCEL 2
 13,626 SQ. FT.
 0.3128 ACRES

PN 685-02-002
 Sublot "2A" in the Waldorf Partners Resubdivision
 PLAT Vol. 324, Pg. 16
 Waldorf Partners Limited Partnership
 Vol. 86-4566, Pg. 60
 Address: 2300

PN 685-02-003
 Common Area "A"
 Kenilworth Townhomes Subdivision PLAT Vol. 334, Pg. 41
 Kenilworth - Mews LLC AFN 200403151193

R = 1486.00 D = 5°51'36"
 T = 76.06 L = 151.98
 C = 151.91 N 90°09'23" E
 REC. & USED

R = 1737.90 D = 13°07'22"
 T = 199.90 L = 398.04
 C = 397.17 N 46°31'19" E
 REC. & USED

1" IRON PIPE FOUND
 N 36°15'49" W 1.49

5/8" IRON PIN
 FOUND "DEMPSEY"
 S 45°42'37" W
 0.11

IRON PIN SET
 N 17°41'00" W
 1.00

3/4" IRON PIPE FOUND
 IN MONUMENT BOX
 AND USED

Sublot 15 in the Euclid Heights Allotment
 PLAT Vol. 36, Pgs. 2, 15 and 17
 Charles Christopherson
 AFN 201605120341

Kenilworth Townhomes Subdivision PLAT Vol. 334, Pg. 40
 Kenilworth Townhomes Resubdivision PLAT Vol. 342, Pg. 26

PN 685-02-030
 Sublot 1
 Waldorf Partners Limited Partnership
 AFN 201009030175

Parcel "B" in the Lot Split for the College Club of Cleveland
 PLAT AFN 20170920311
 WZ Residential Group/CC.LLC
 AFN 201708280739

Sublot 29 in the Euclid Heights Allotment
 PLAT Vol. 36, Pgs. 2, 15 and 17
 Xian Miao & Co., Inc.
 AFN 20160606260051

PN 685-02-013
 in the Euclid Heights Allotment

N 42°48'00" W 12.24 R.

S 55°37'36" W 458.91 R.
 N 34°23'04" W 45.01 R.

S 55°37'36" W 178.54 R.
 149.47 R.

S 72°20'00" W 138.42 R.
 56.09 R.

N 17°40'00" W 86.02 R.
 26.96 R.

S 14°56'00" E 60.07 R.
 60.07 R.

S 11°40'00" E 85.04 R.
 141.71 R.

S 55°37'36" W 280.37 R.
 PN 685-02-035

PN 685-02-034
 PN 685-02-033

PN 685-02-032
 Could not be set
 due to utilities

PN 685-02-031
 N 72°20'00" E 53.46 R.

PN 685-02-045
 PN 685-02-046

PN 685-02-044
 PN 685-02-045

PN 685-02-046
 PN 685-02-045

N 66°40'18" E 115.73 R.
 S 66°40'18" W 122.59 R.

PN 685-02-037

PN 685-02-037

PN 685-02-036

PN 685-02-035

PN 685-02-034

PN 685-02-033

PN 685-02-032

PN 685-02-031

PN 685-02-030

PN 685-02-029

PN 685-02-028

PN 685-02-027

PN 685-02-026

PN 685-02-025

PN 685-02-024

PN 685-02-023

PN 685-02-022

PN 685-02-021

PN 685-02-020

PN 685-02-019

PN 685-02-018

PN 685-02-017

PN 685-02-016

PN 685-02-015

PN 685-02-014

PN 685-02-013

PN 685-02-012

PN 685-02-011

PN 685-02-010

PN 685-02-009

PN 685-02-008

PN 685-02-007

PN 685-02-006

PN 685-02-005

PN 685-02-004

PN 685-02-003

PN 685-02-002

PN 685-02-001