



**Sustainable Community Associates**  
Owner | Developer



**Park Synagogue**  
Mendelsohn Restoration

Cleveland Heights  
**Landmarks Commission**

*Demolition Request*  
***Kangesser Hall***  
5 6 2025





**Demolition Request:**

[1]  
Demolition of the vacant Kangesser Hall



**Park Synagogue**  
Mendelsohn Restoration



Sustainable Community Associates

**studio BC**



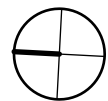
**Kangesser Hall**

Demolition Request | 5 6 2025





not to scale



**Park Synagogue**  
Mendelsohn Restoration



Sustainable Community Associates

**studio BC**



**Existing Site Plan**  
Demolition Request | 5 6 2025





Boiler House



School



Mikvah



Kangesser



Bridge



Temple



Daycare



**Park Synagogue**  
Mendelsohn Restoration



Sustainable Community Associates

studio BC

Environmental  
Design Group

REED  
HILDER  
BRAND

NAYLORWELLMAN, LLC  
HISTORIC PRESERVATION CONSULTING

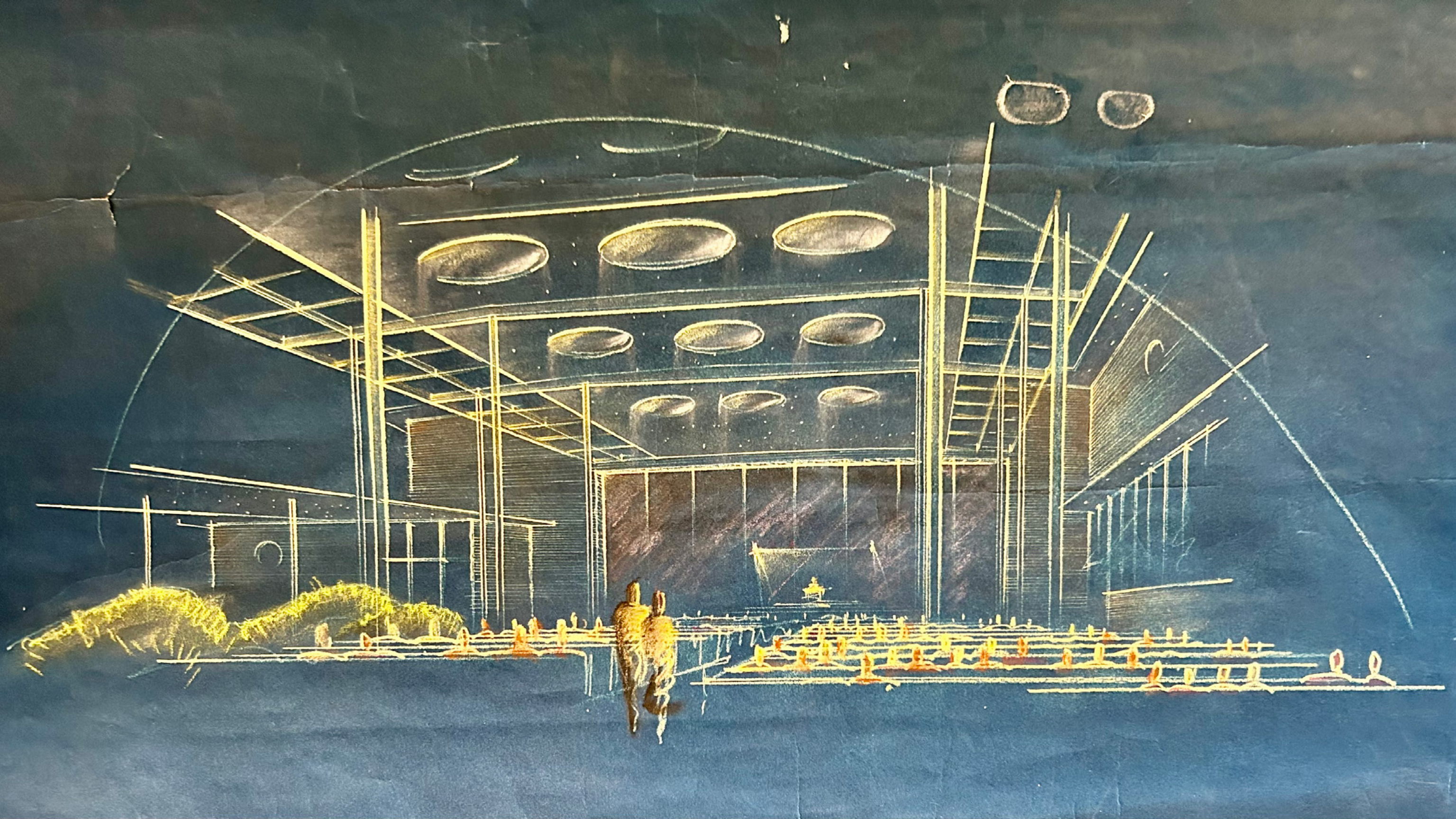
**Existing Buildings**

Demolition Request | 5 6 2025









**Park Synagogue**  
Mendelsohn Restoration



Sustainable Community Associates

**studio BC**

**Environmental**  
Design Group

**REED**  
**HILDER**  
**BRAND**

**NAYLORWELLMAN, LLC**  
HISTORIC PRESERVATION CONSULTING

**c1955 Courtyard Cover Persp**

Demolition Request | 5 6 2025





**Park Synagogue**  
Mendelsohn Restoration



Sustainable Community Associates

studio BC



**c1955 Courtyard Cover Plan**

Demolition Request | 5 6 2025





site plan



**Park Synagogue**  
Mendelsohn Restoration



Sustainable Community Associates

**studio BC**

**Environmental**  
Design Group

**REED**  
**HILDER**  
**BRAND**

**NAYLOR WELLMAN, LLC**  
HISTORIC PRESERVATION CONSULTING

**c1967 Kangesser Concept Plan**

Demolition Request | 5 6 2025





**Park Synagogue**  
Mendelsohn Restoration



Sustainable Community Associates

studio BC

Environmental  
Design Group

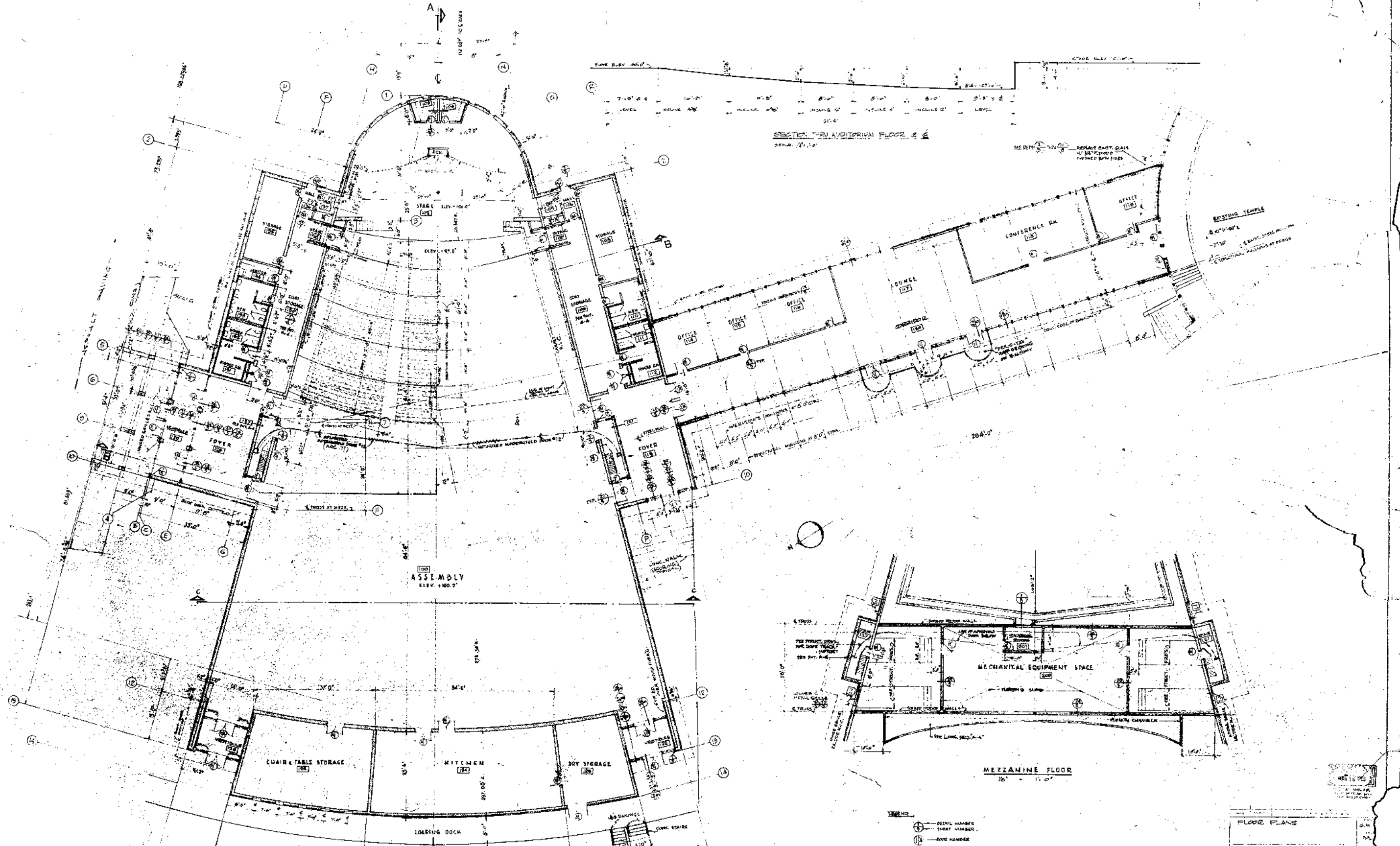
REED  
HILDER  
BRAND

NAYLORWELLMAN, LLC  
HISTORIC PRESERVATION CONSULTING

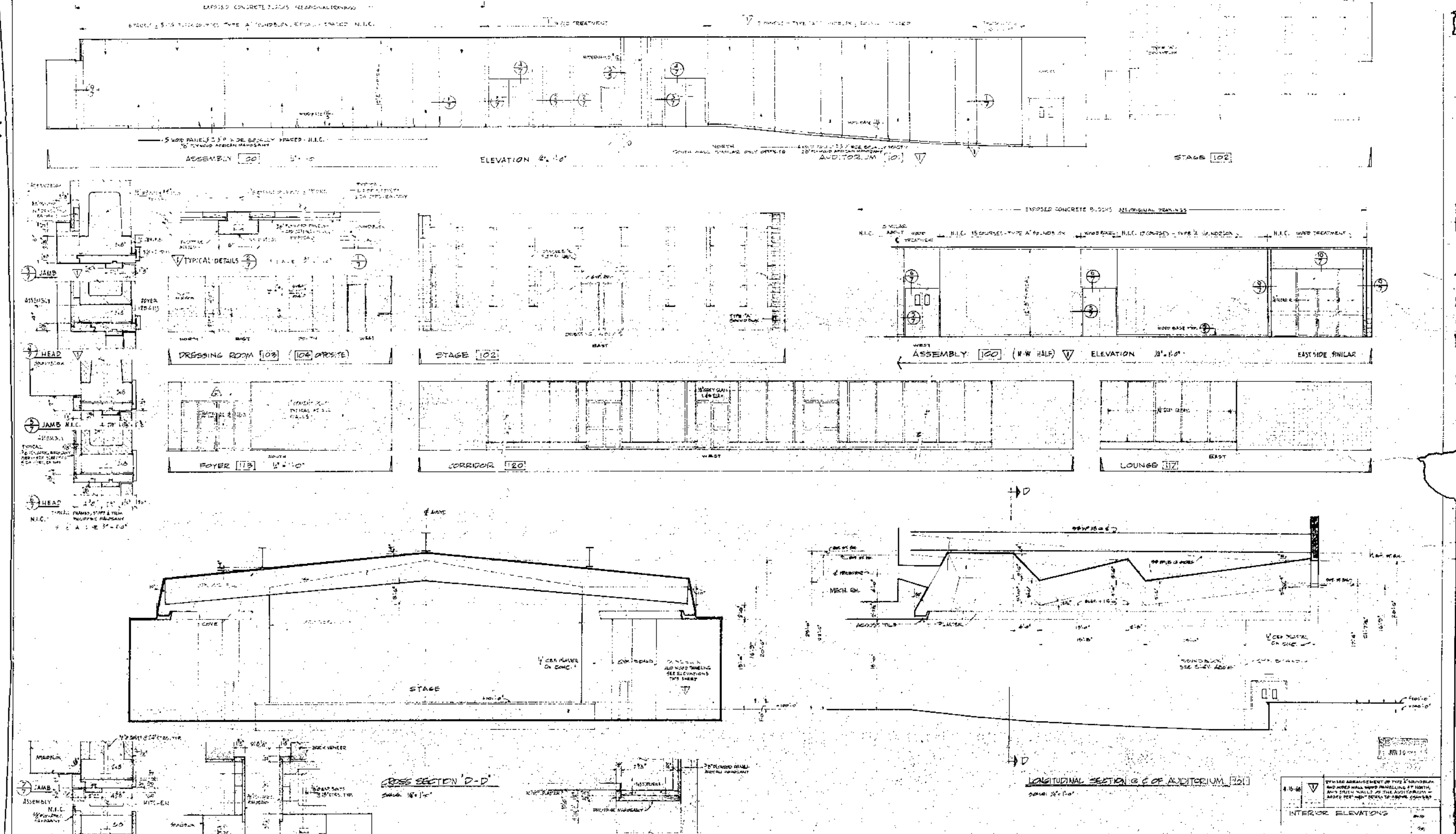
**c1967 Kangesser Concept Plan**

Demolition Request | 5 6 2025

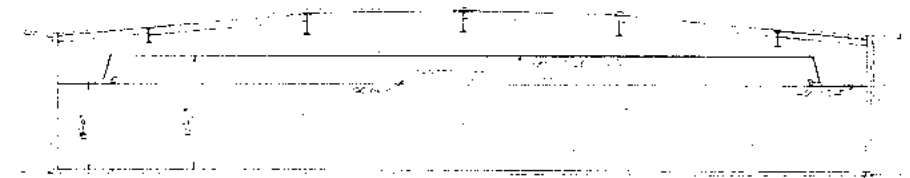












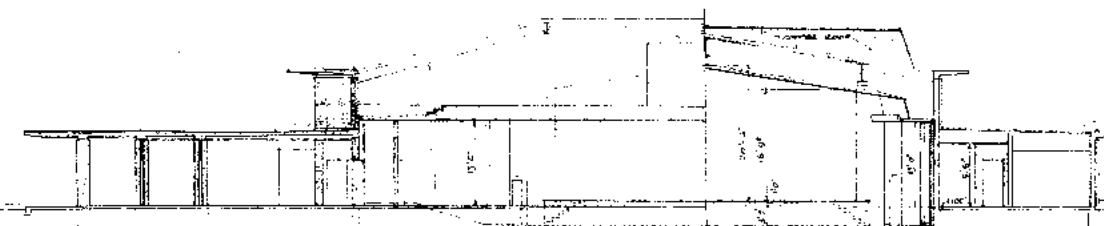
CROSS SECTION C-C (ASSUMED)  
1/8" x 1.0"



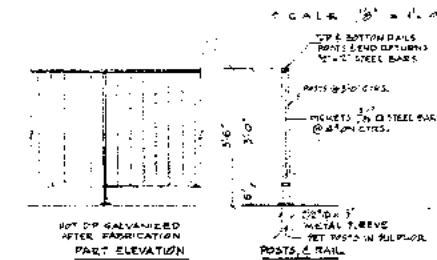
WEST ELEVATION C.B. BRIDGE



EAST ELEVATION OF BRIDGE  
10" x 10"

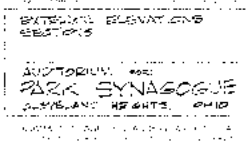


CROSS SECTION B-B



SOUTH ELEVATION

RAIL DETAIL







**Park Synagogue**  
Mendelsohn Restoration



Sustainable Community Associates

**studio BC**



**REED  
HILDER  
BRAND**

**NAYLORWELLMAN, LLC**  
HISTORIC PRESERVATION CONSULTING

**2024 Exterior Photograph**

Demolition Request | 5 6 2025

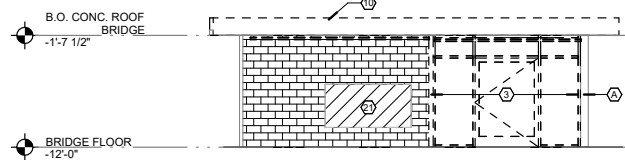








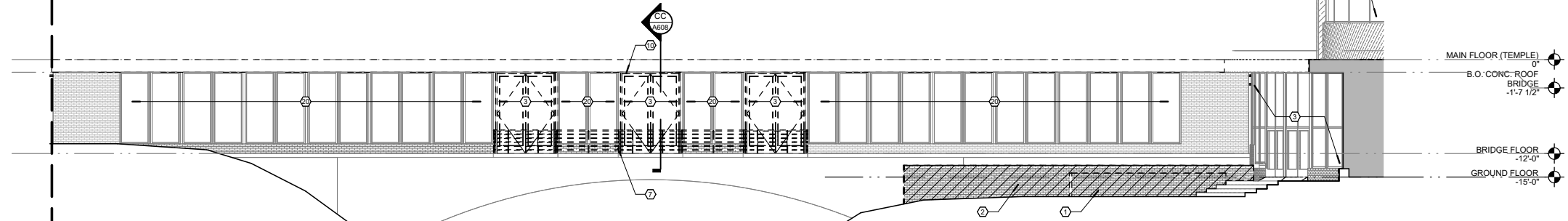




3  
D405  
1/8" = 1'-0"

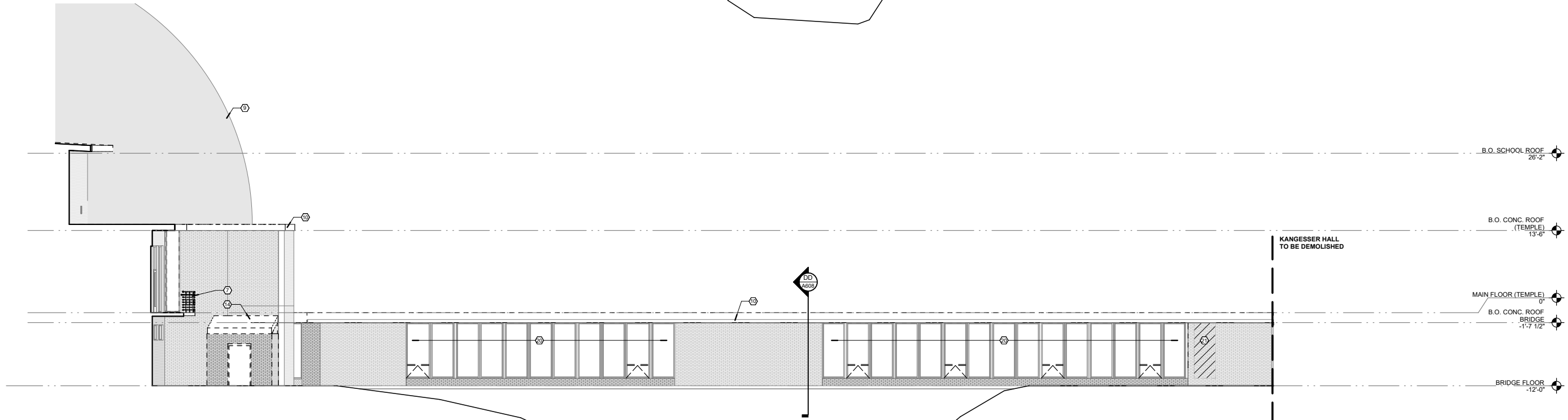
**BRIDGE EAST DEMO ELEVATION**

KANGESSER HALL  
TO BE DEMOLISHED



2  
D405  
1/8" = 1'-0"

**BRIDGE NORTH DEMO ELEVATION**



1  
D405  
1/8" = 1'-0"

**BRIDGE SOUTH DEMO ELEVATION**



**Park Synagogue**  
Mendelsohn Restoration



Sustainable Community Associates

**studio BC**



**Bridge Existing Elevations**

Demolition Request | 5 6 2025



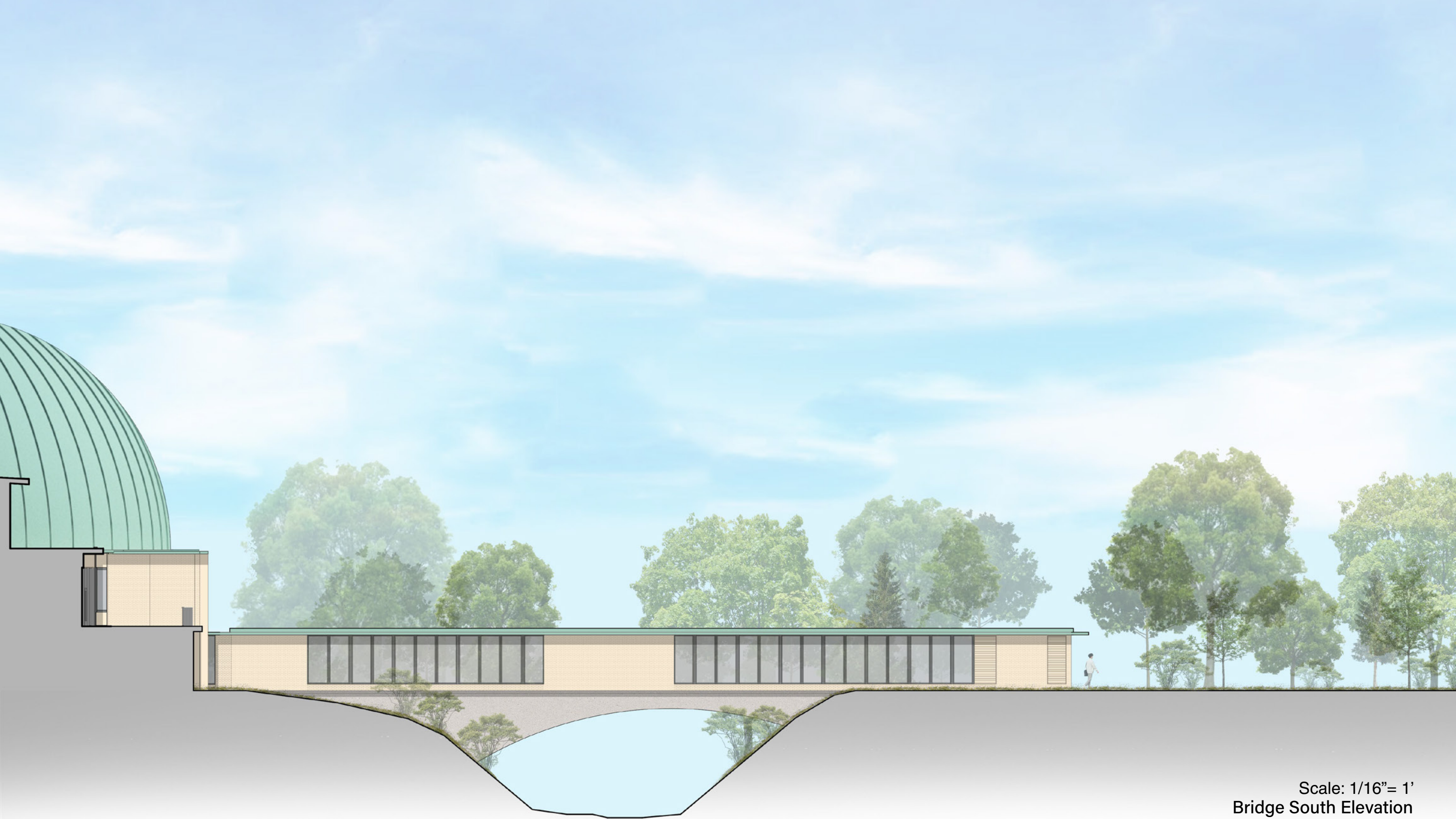


Bridge East Elevation



Scale: 1/16" = 1'  
Bridge North Elevation





Scale: 1/16" = 1'  
Bridge South Elevation



**Park Synagogue**  
Mendelsohn Restoration



Sustainable Community Associates

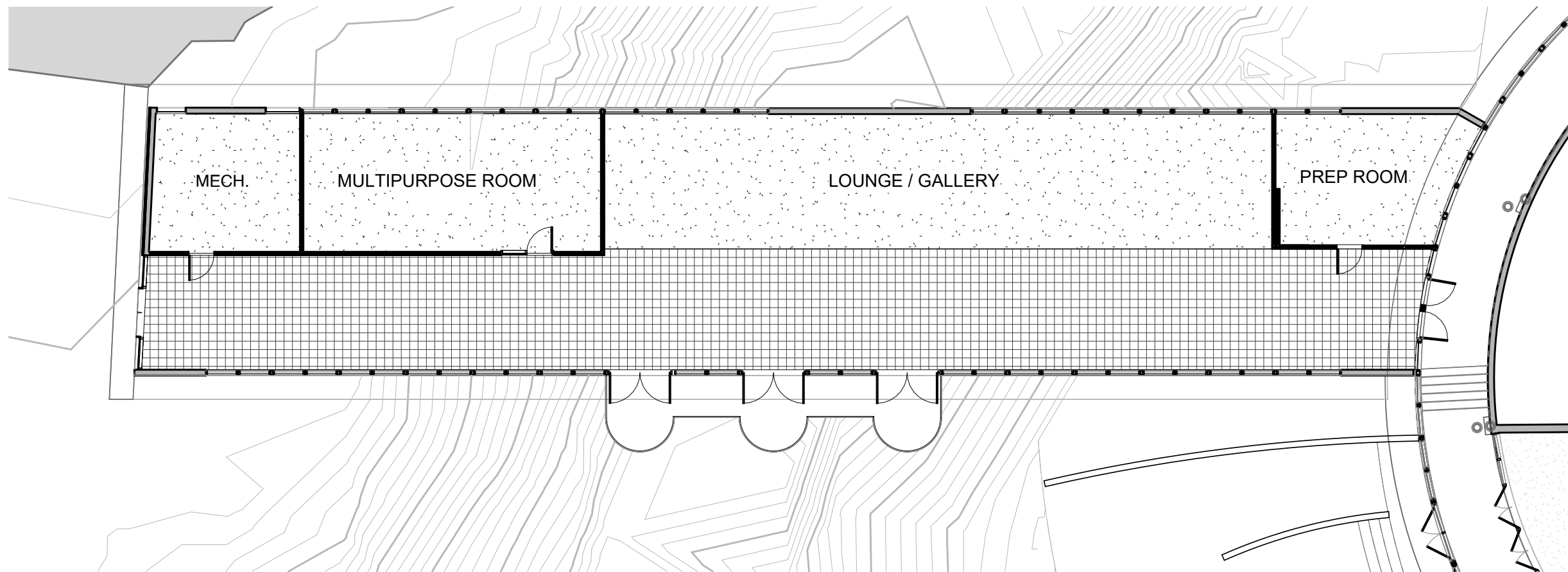
**studio BC**



**Bridge Proposed Elevations**

Demolition Request | 5 6 2025





not to scale





**Park Synagogue**  
Mendelsohn Restoration



Sustainable Community Associates

**studio BC**



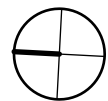
**Preliminary Development Plan**

Demolition Request | 5 6 2025





not to scale



**Park Synagogue**  
Mendelsohn Restoration



Sustainable Community Associates

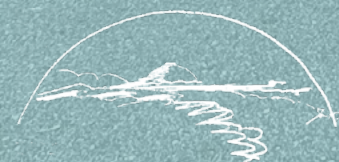
**studio BC**



**Preliminary Phase 1 Plan**

Demolition Request | 5 6 2025





**Park Synagogue**  
Mendelsohn Restoration