



# EASTSIDE GREENWAY

Cuyahoga County, *East Cleveland Region*

Steering Committee Meeting #1

2014.07.14

SMITHGROUPJJR

Baker



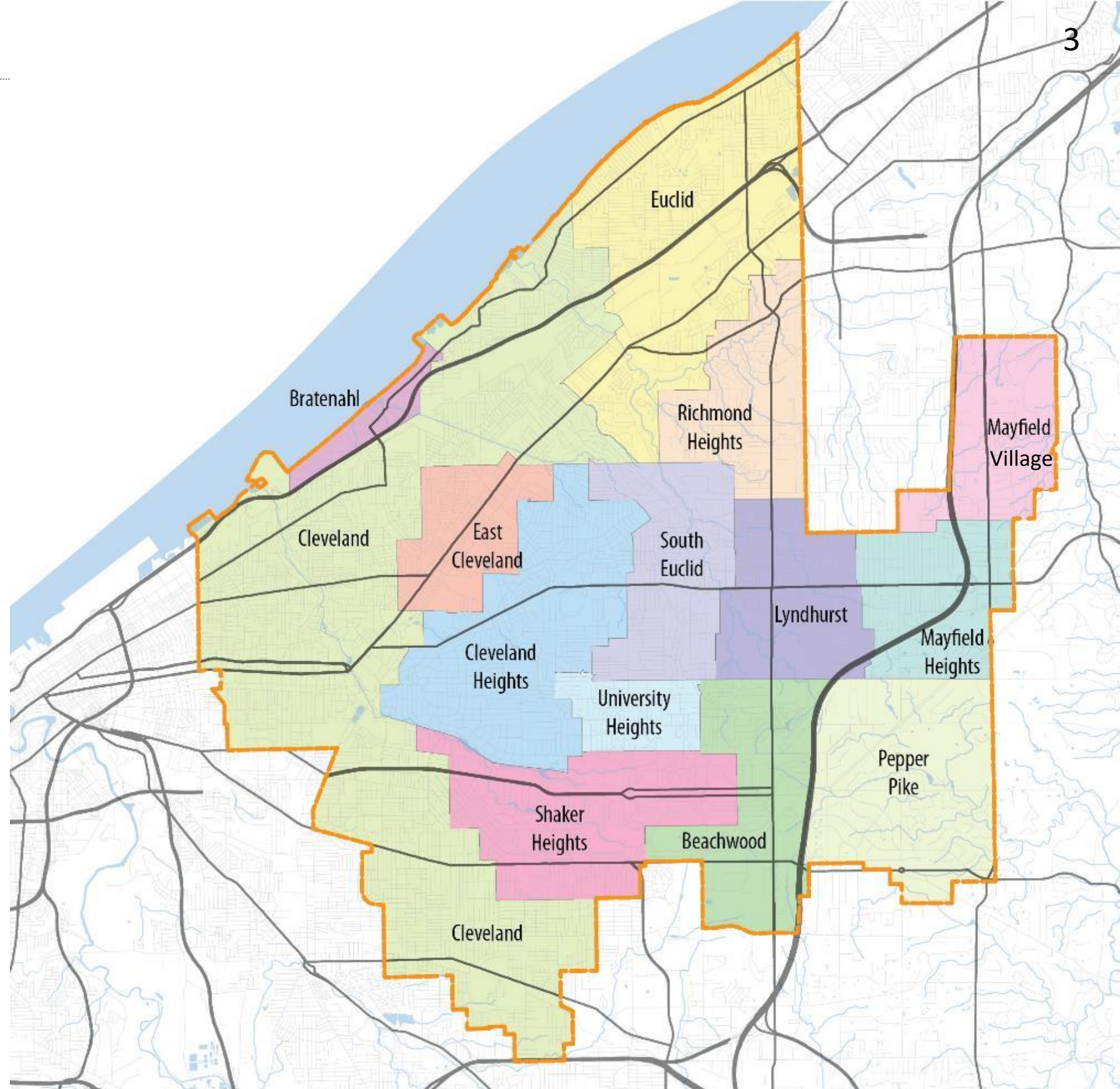
- Introductions
- Work Plan / Schedule
- Public Meetings
- Health Impact Assessment (HIA) Overview
- Review & Discuss Project Goals
- Next Steps





# Study Area + Municipalities

- Cleveland
- East Cleveland
- Bratenahl
- Euclid
- Richmond Heights
- South Euclid
- Cleveland Heights
- University Heights
- Lyndhurst
- Mayfield Village
- Mayfield Heights
- Pepper Pike
- Shaker Heights
- Beachwood



Project Team

Project Sponsors

Glenn Coyne – Cuyahoga County Planning Commission  
Patrick Hewitt – Cuyahoga County Planning Commission  
Anna Swanberg – LAND studio  
Nancy Boylan – LAND studio  
Joel Wimbiscus – LAND studio

Advisory Members

Ryan Noles – NOACA  
Jacob Van Sickle – Bike Cleveland  
Valerie Shea – RTA  
Kelly Coffman – Cleveland Metroparks

Consultant Team

Neal Billetdeaux – SmithGroupJJR  
Nancy Lyon-Stadler – Baker  
Oliver Kiley – SmithGroupJJR  
Chad Brintnall – SmithGroupJJR  
TengTeng Wang - SmithGroupJJR

Steering Committee

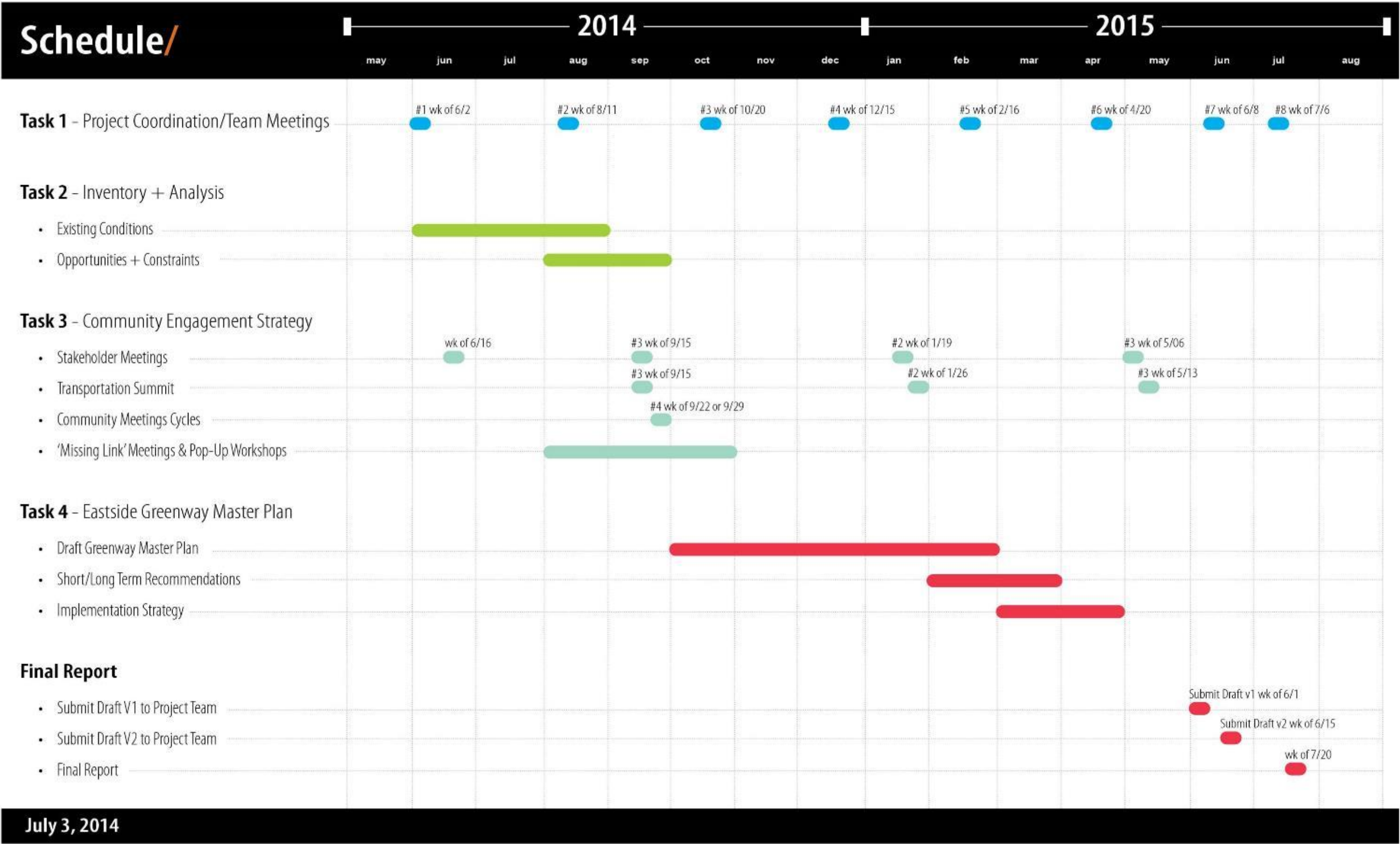
Municipalities

Jim Sonnhalter – Euclid  
Ann Klavora – Shaker Heights  
Richard Wong – Cleveland Heights  
Melran Leach – East Cleveland  
Marty Cader – Cleveland  
Tina Turick – Beachwood  
TBD – University Heights  
Mayor Joseph Cicero – Lyndhurst  
Steve Presley – Pepper Pike  
Mayor Anthony DiCicco – Mayfield Heights  
Diane Wolgamuth – Mayfield Village  
Mayor Miesha Haden – Richmond Heights  
Keith Benjamin – South Euclid  
Jeanne Lyons – Bratenahl

Advisory Members

Melinda Bartizal / John Motl – ODOT  
Stan Kosilesky – Cuyahoga County Dept. of Public Works  
Marc Lefkowitz – Green City Blue Lake Institute & Cleveland Hts. Trans. Action Comm.  
Kay Carlson – Nature Center at Shaker Lakes  
Tori Mills – Doan Brook Watershed Partnership  
Rory Robinson – National Parks Service  
Claire Posius – Cuyahoga Soil and Water Conservation District  
Kathy Hexter – Cleveland State University  
Elise Yablonsky – University Circle Inc.  
Martha Halko – Cuyahoga County Board of Health  
Kyle Dreyfuss-Wells – NEORSD





July 3, 2014



- **Steering Committee Meetings**

- Project Team & Advisors
- Municipalities & Advisors

- **Transportation Summit**

- Provide a community event to publically kick-off and coordinate the planning initiatives in the region
- Open-house format

- **Community Meeting Cycles**

- 3 Cycles of meetings, held at 4 locations for each cycle

- **“Missing Links” Workshops**

- 3 or 4 events focused on the missing links.
- Biking the corridor and/or meeting to talk + discuss.

- **Pop-Up Workshops**

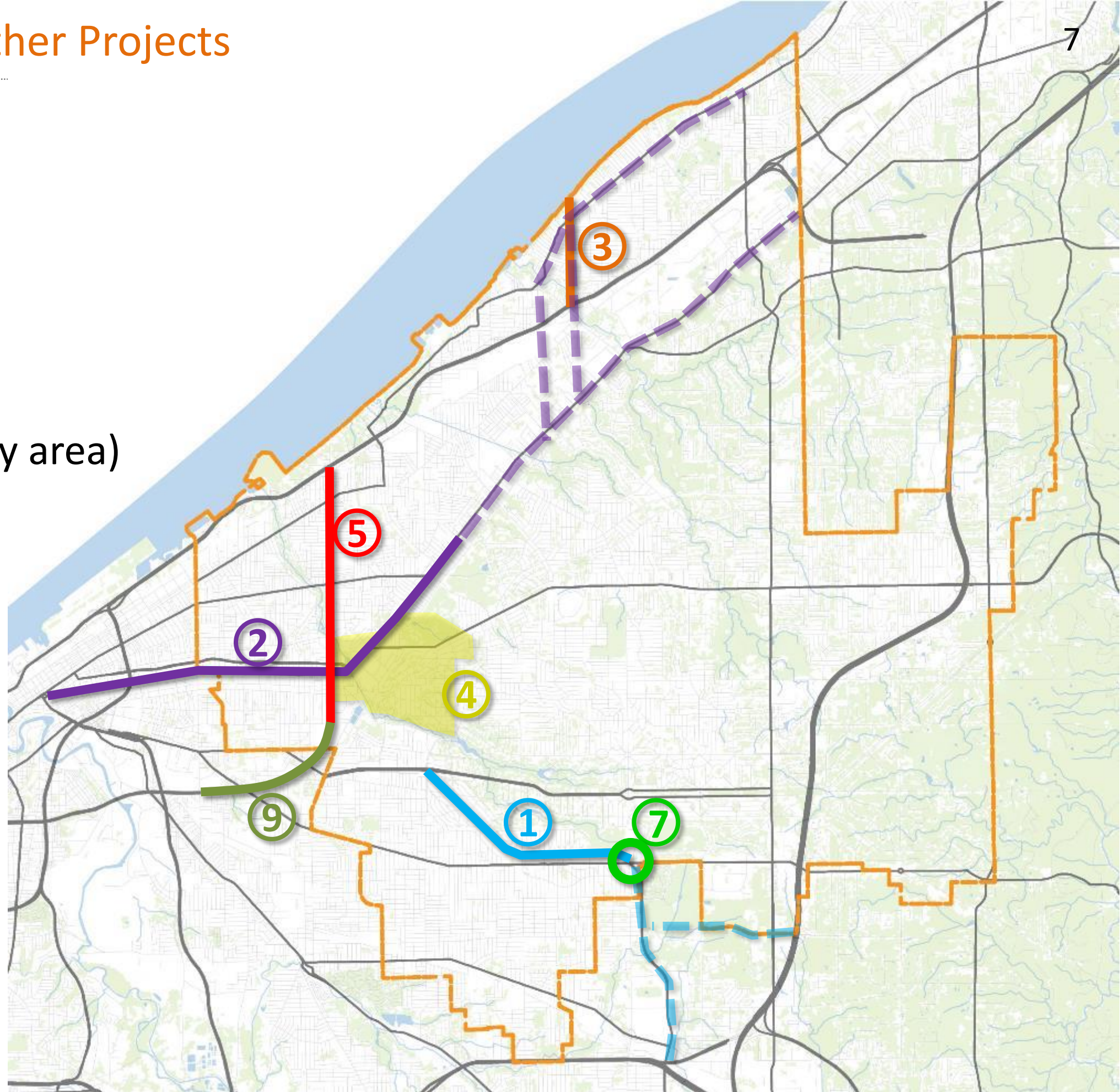
- LAND studio led “boots on the ground” effort





# Relevant Planning Initiatives & Other Projects

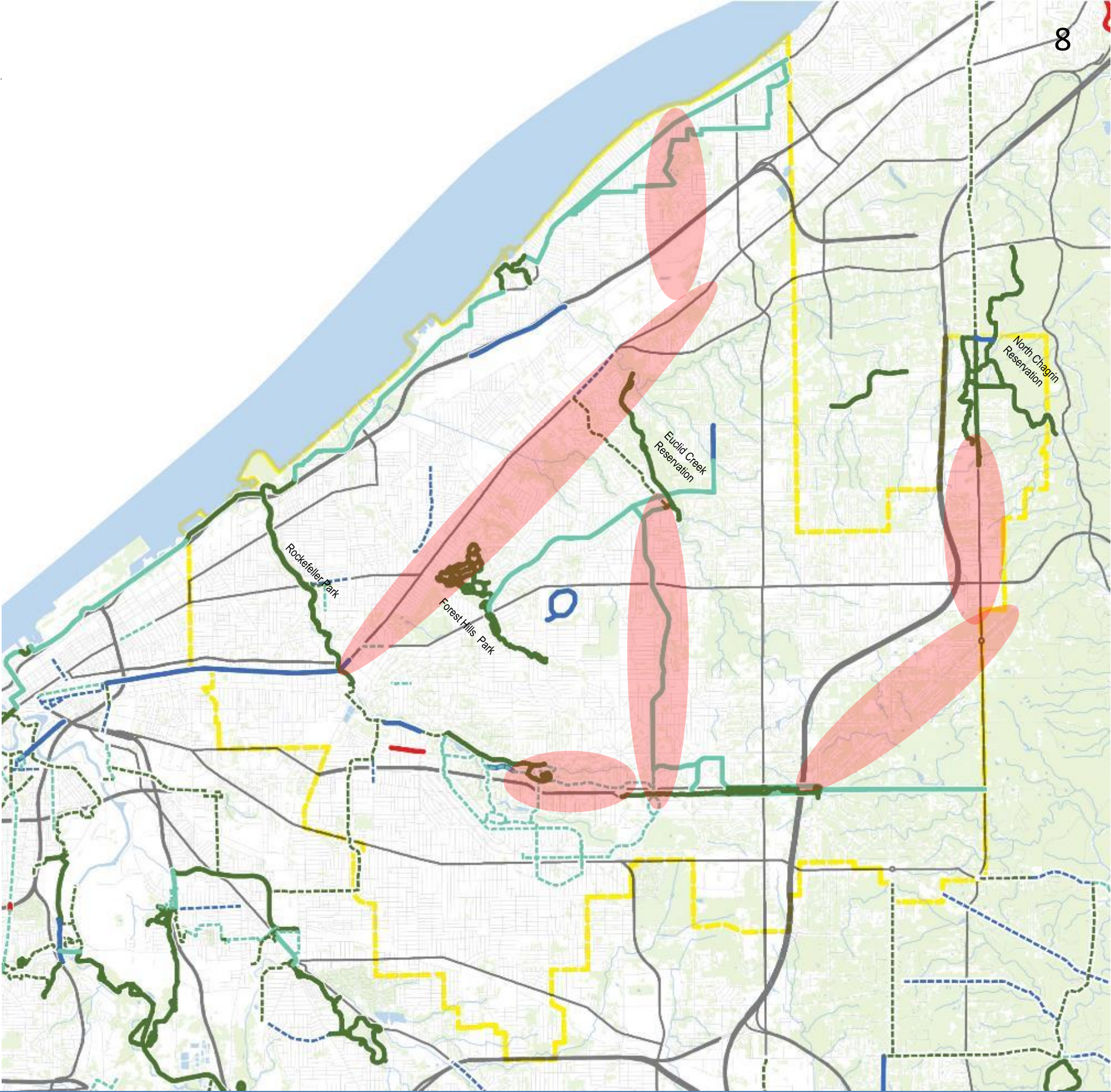
1. RTA Blue Line
2. RTA Healthline/Redline
3. TLCI – East 185<sup>th</sup>
4. TLCI – University Circle
5. TLCI – East 105<sup>th</sup>
6. Health Impact Assessment (study area)
7. Van Aken Development
8. Transit station construction
  - University Circle/Mayfield Station
9. ODOT Opportunity Corridor





## NON-MOTORIZED / BIKEWAYS

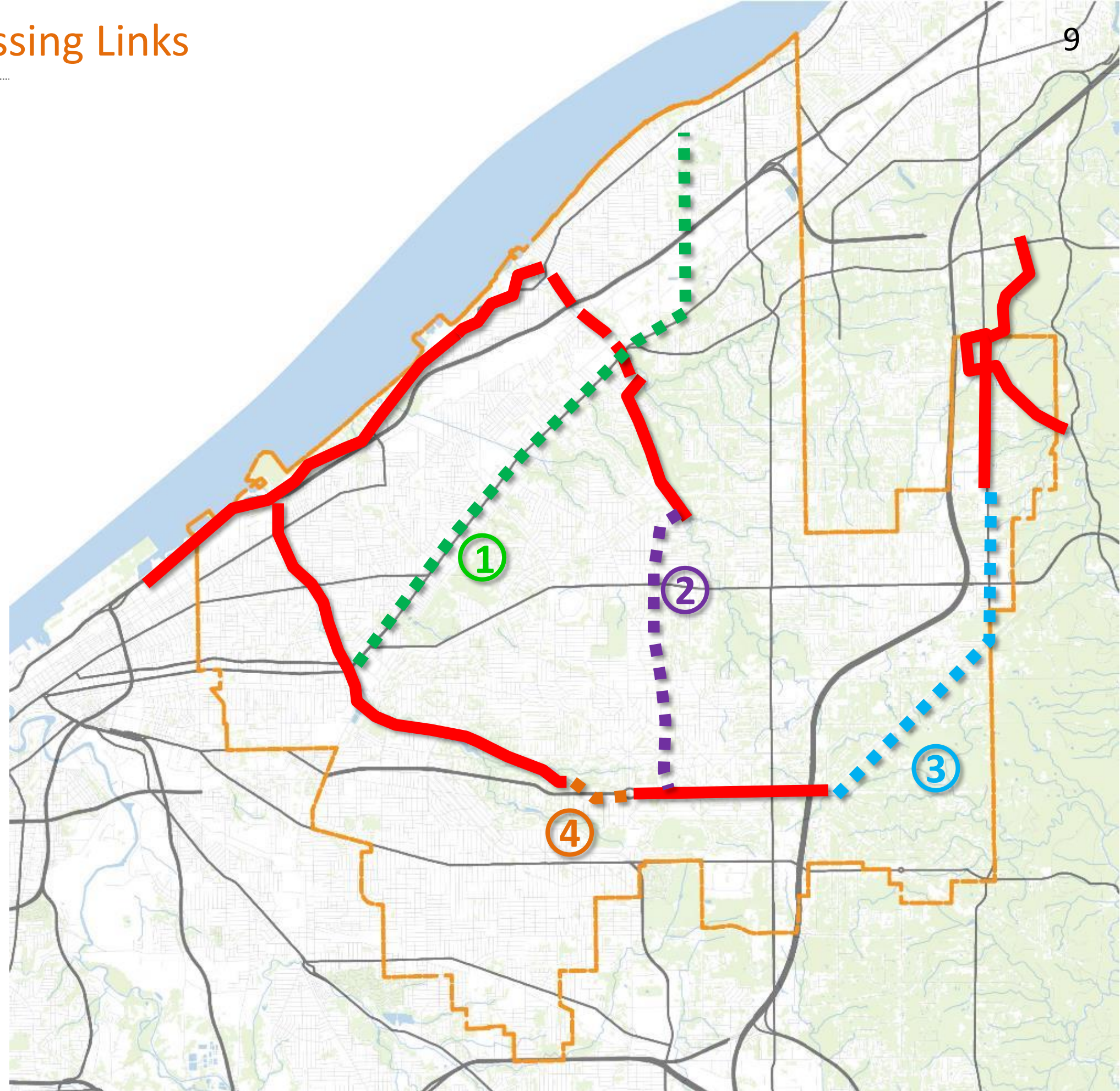
- Committed, Lane
- Committed, Path
- Committed, Route
- Existing, Lane
- Existing, Path
- Existing, Route
- Planned, Lane
- Planned, Path
- Planned, Route





# Major Existing Connections & Missing Links

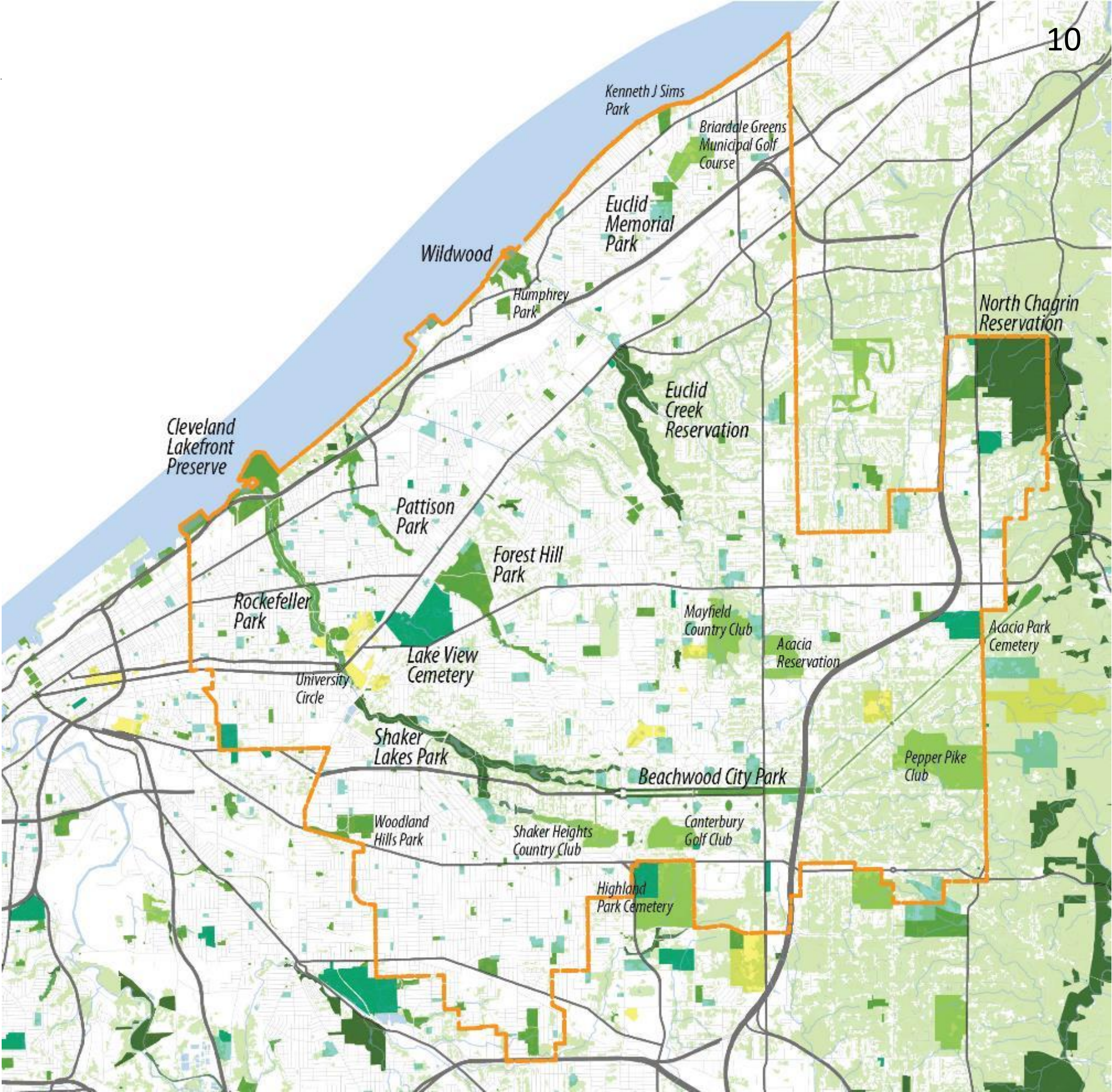
1. Euclid Road Connector
2. Euclid Creek
3. Gates Mills
4. Shaker Blvd
  - Partially under design



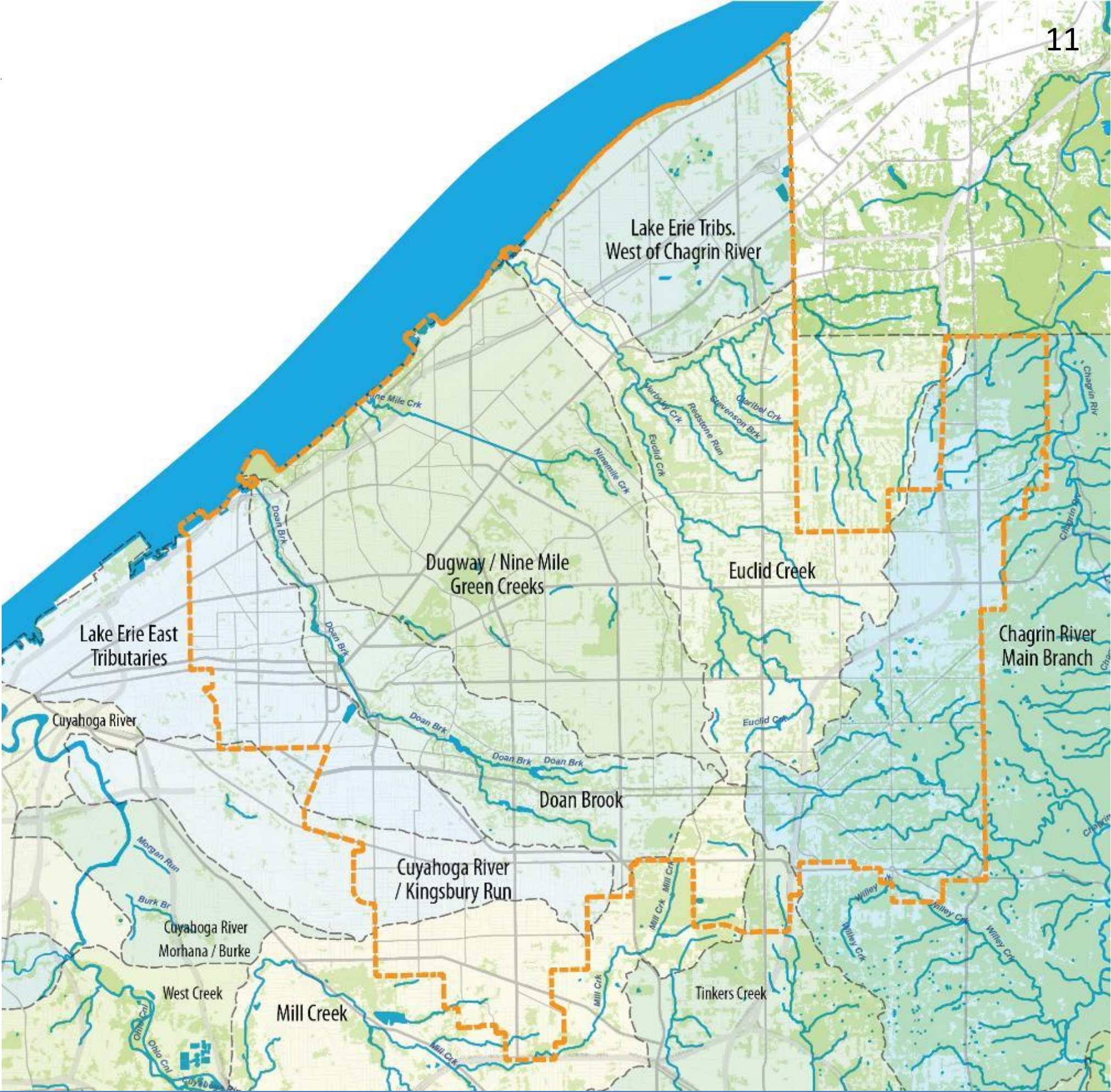


## OPEN SPACE & HABITAT

- CEMETERY
- CONSERVATION LAND
- GOLF COURSE
- PARK LAND
- VEGETATED LAND COVER
- SCHOOLS
- UNIVERSITIES



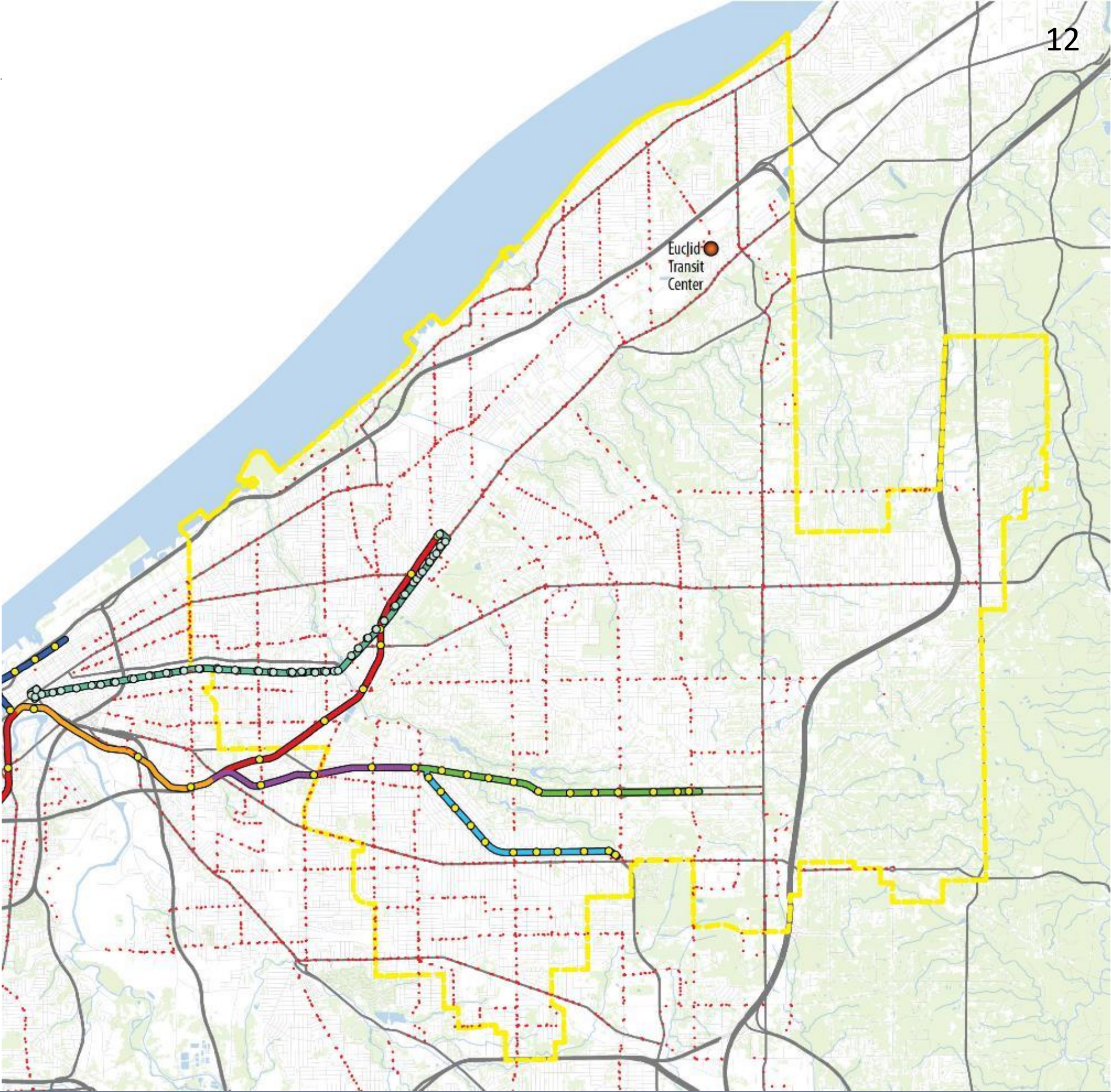






## TRANSIT SYSTEMS

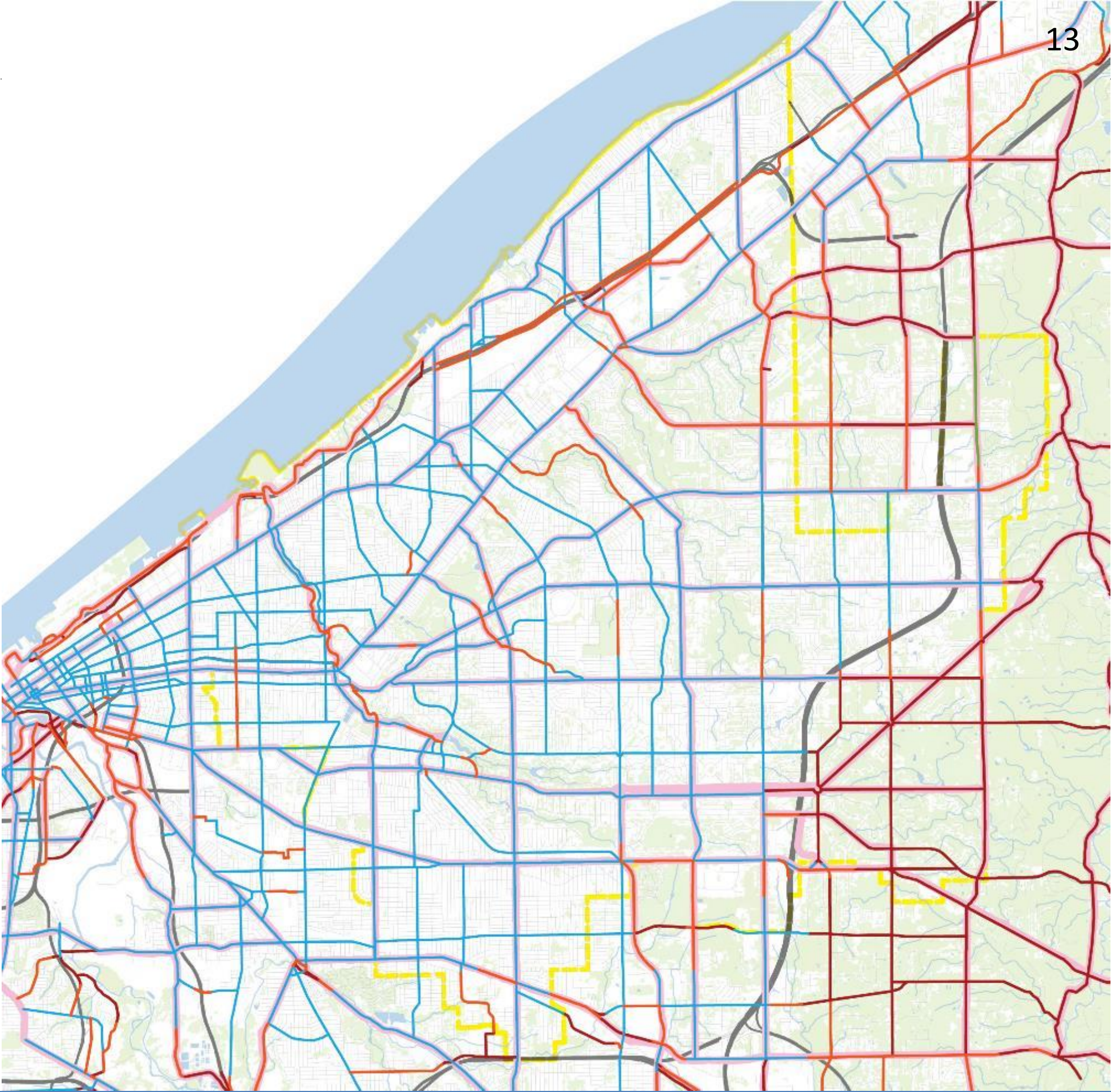
- Bus Stops
- BRT Healthline
- Healthline BRT Stations
- Blue Line
- Green Line
- Combined Line (Red/Blue/Green)
- Red Line East
- Shaker Trunk (Blue/Gren)
- Waterfront Line
- RTA Rail Stations





# On-Street Sidewalk Inventory

- Multipurpose\_Paths
- Partial\_Sidewalks
- Complete\_Sidewalks
- No\_Sidewalks
- Priorty Plan 2008 (background)

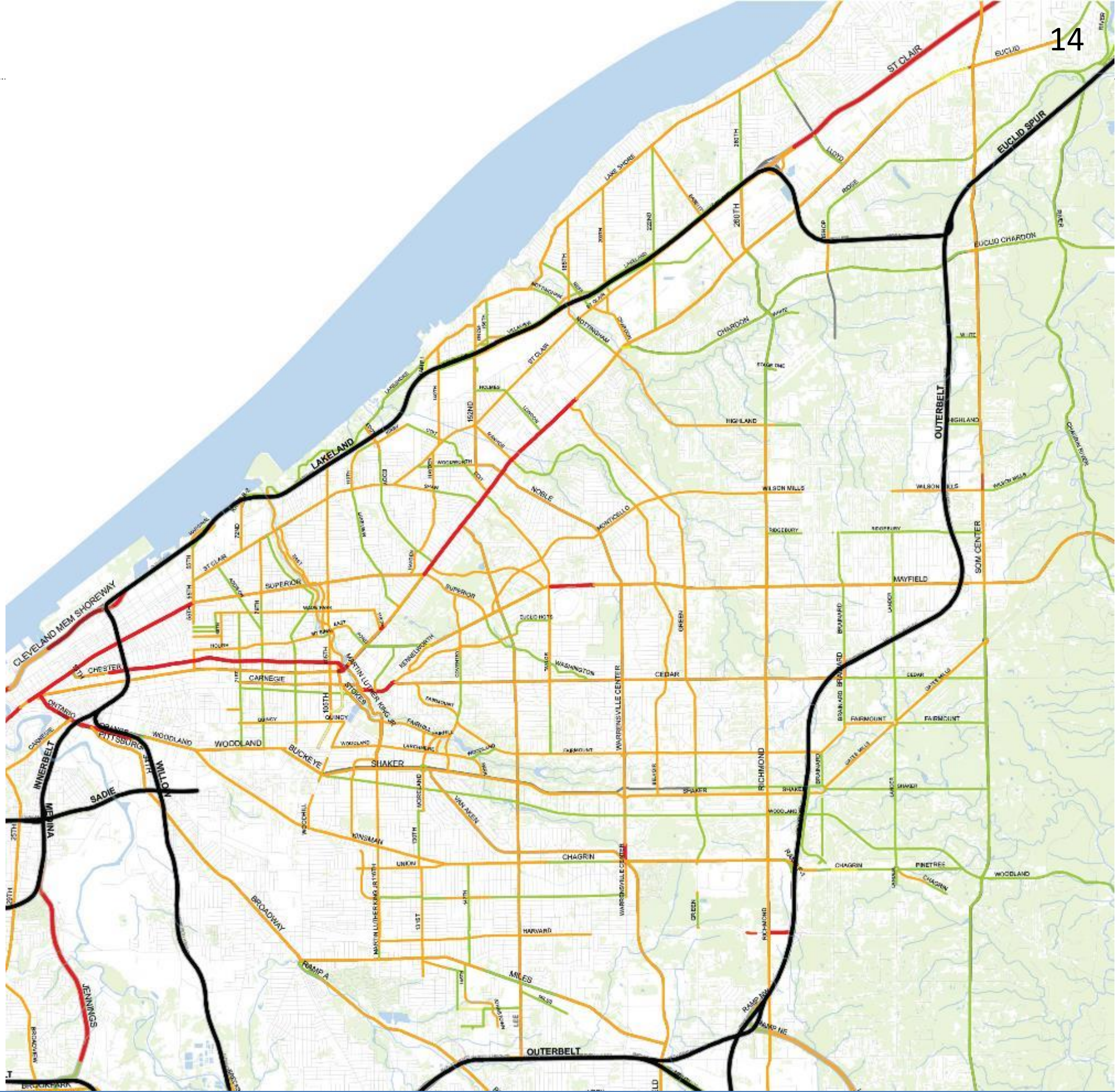




# Road Lane Inventory

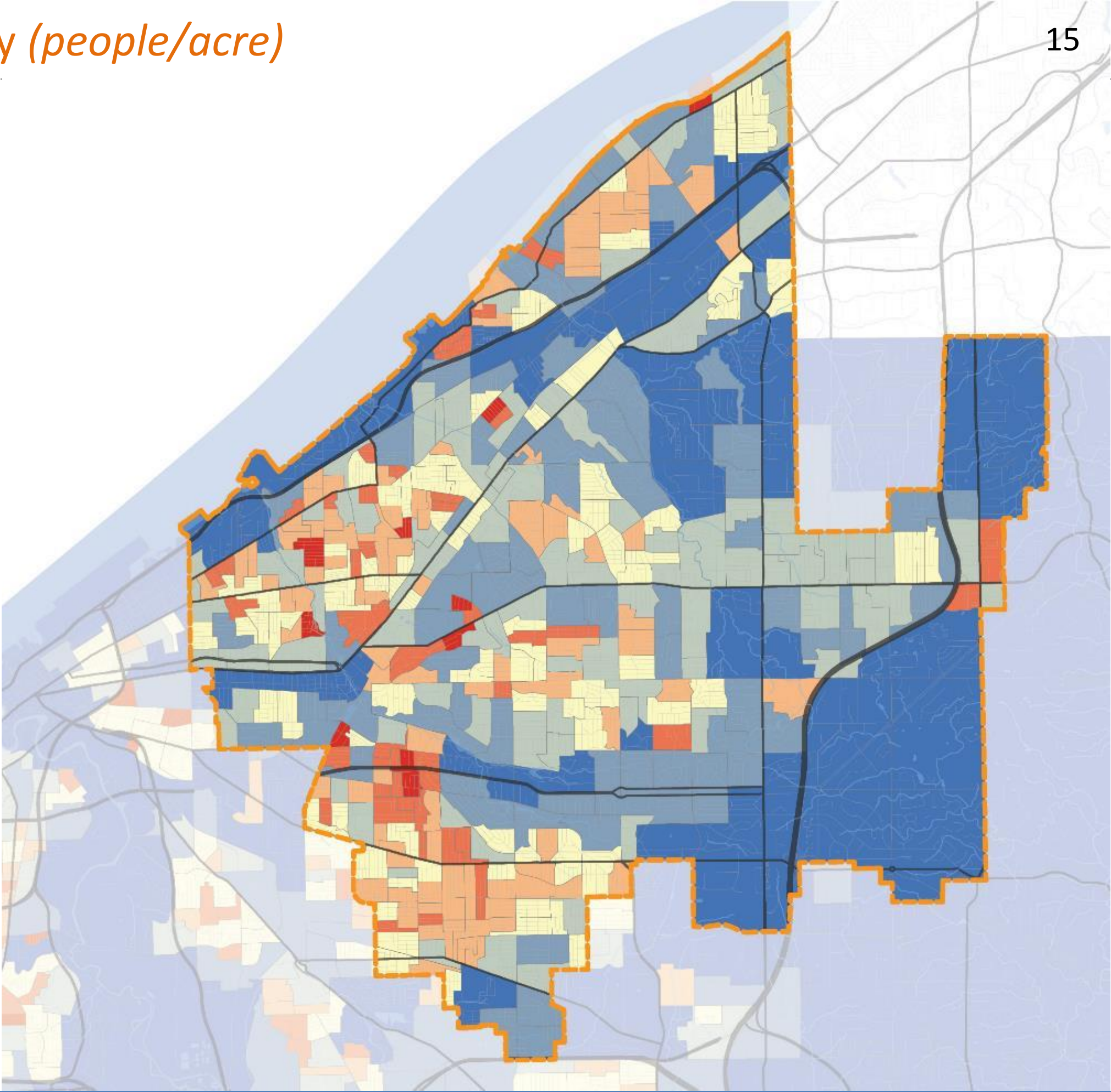
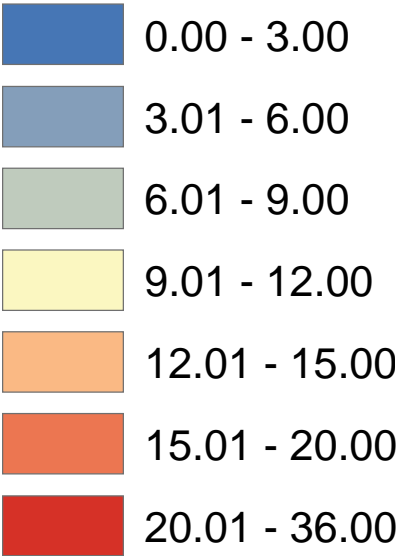
**LANES**

- 2
- 3
- 4
- 5
- 6
- 7+
- Interstate



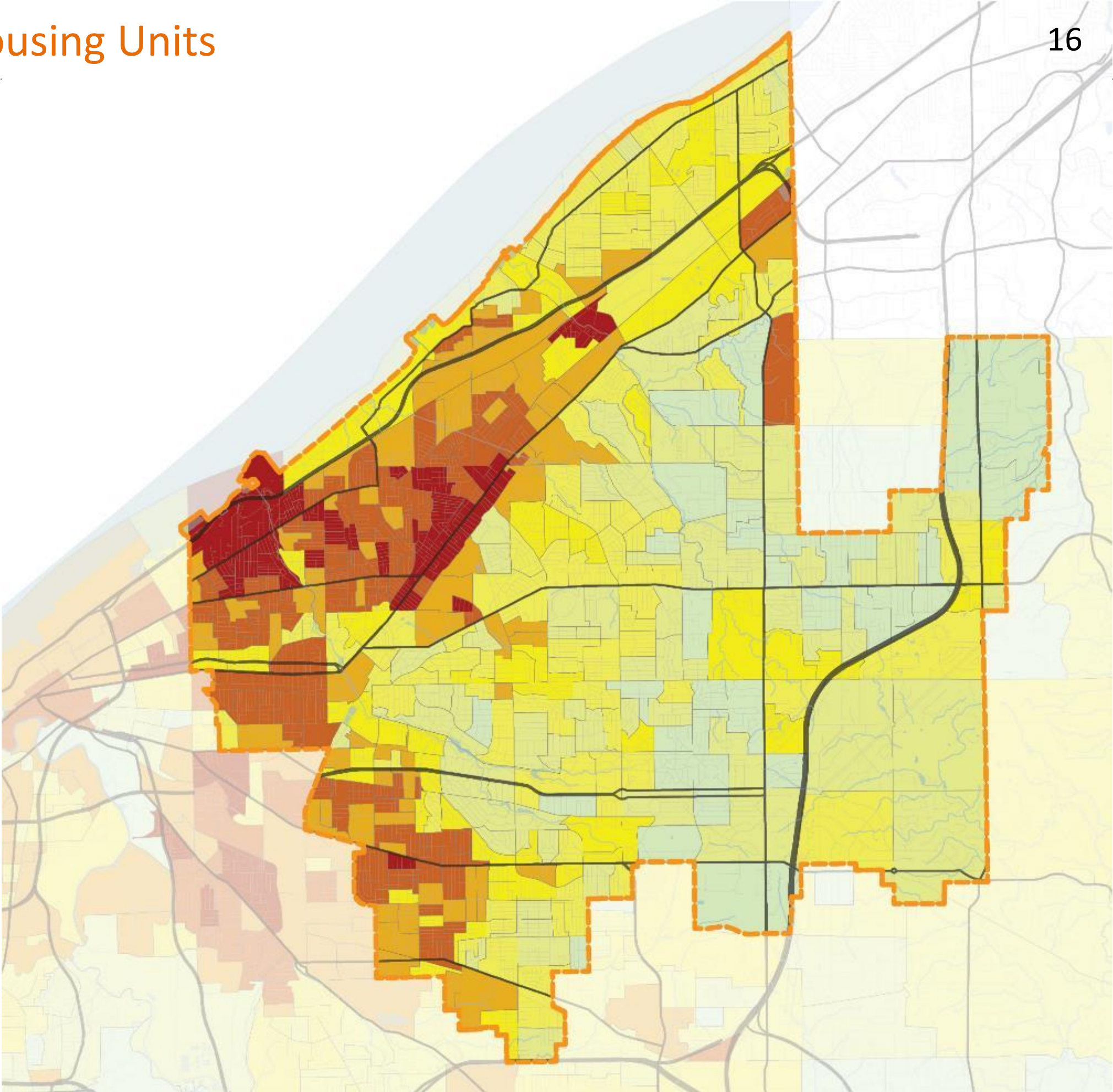
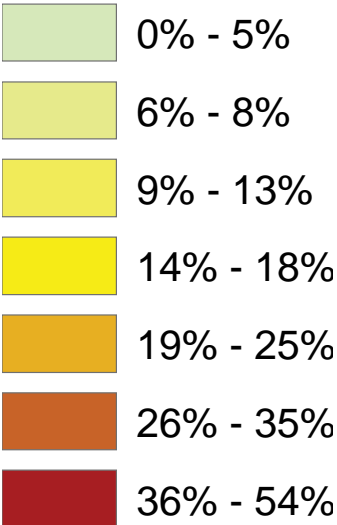


PopDensity





Percent Vacant Housing Units





# East Side Greenway HIA “Assessment”



Technical Advisory Committee Meeting  
Wednesday-May 21, 2014

*Program grant supported by a grant from the Health Impact Project, a collaboration of the Robert Wood Johnson Foundation and the PEW Charitable Trusts, with funding from the Saint Luke's Foundation.*



1. Develop transportation projects that **provide more travel options through complete streets and context sensitive solutions**
2. Promote **reinvestment in underutilized or vacant/abandoned** properties
3. Support **economic development** through place-based transportation and land-use recommendations.
4. Integrate **accessibility, environmental justice, and community health** considerations into preferred recommendations
5. **Complement existing plans and proposed initiatives** and encourage collaboration and coordination between regional and community partners.



- Draft Inventory + Analysis (July & August)
  - Identify issues & opportunities (August & September)
  - Natural Area Connectivity analysis
  - Demographic Needs analysis
  - Route Assets, Opportunities, Constraints
- Planning for Transportation Summit & Public Workshops for Fall 2014
  - Transportation Summit: Week of September 15<sup>th</sup>
  - First public workshop cycle: Week of September 22<sup>nd</sup> or 29<sup>th</sup>
- Next Steering Committee Meeting
  - Coordinate with Transportation Summit (week of September 15<sup>th</sup>)