



CHRIST COMMUNITY CHURCH

P.O. Box 201633
Shaker Hts., OH 44120

Phone: (216) 417-7958
Website: www.worshipccc.com
E-mail: info@worshipccc.com

Seek. Serve. Transform.

March 13, 2019

To Whom It May Concern:

On behalf of Christ Community Church, I want to express our profound excitement of making the Cleveland Heights community our new home. Our goal is to be a blessing to the community by providing outreach and services that will help to improve our community.

We understand the concerns that a community may have when any organization moves into the neighborhood. As a faith organization, our commitment is to honor God by the way we love and serve our neighbors. Therefore, we intend to utilize our building to serve the community in the following ways.

- Providing weekly Sunday morning services at 11 am. We plan to have worship services for all in the community in addition to Sunday morning youth activities. Services will last approximately 2 hours with a time of social gathering following the service. Regarding parking, we are in pursuing conversation with Brenner Furniture and Cleveland Heights High School to provide parking on Sunday mornings.
- During the week, we plan to conduct standard church activities including
 - Weekly Bible study
 - Wednesday evening prayer meetings
 - Thursday evening choir rehearsal
- In addition to conducting church-related affairs, we would also like to open our facility to the youth in the neighborhood to enjoy recreational and arts activities in a safe environment.
- We also plan to beautify the building with landscaping to ensure the property is inviting and complements the area.

We welcome the opportunity to work with our new neighbors to help contribute to the advancement of the Cleveland Heights community. Please feel free to ask any questions.

Sincerely,

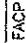
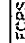
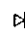
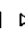





Luvirt Parker
Lead Pastor, Christ Community Church

HEIGHTS YOUTH CLUB

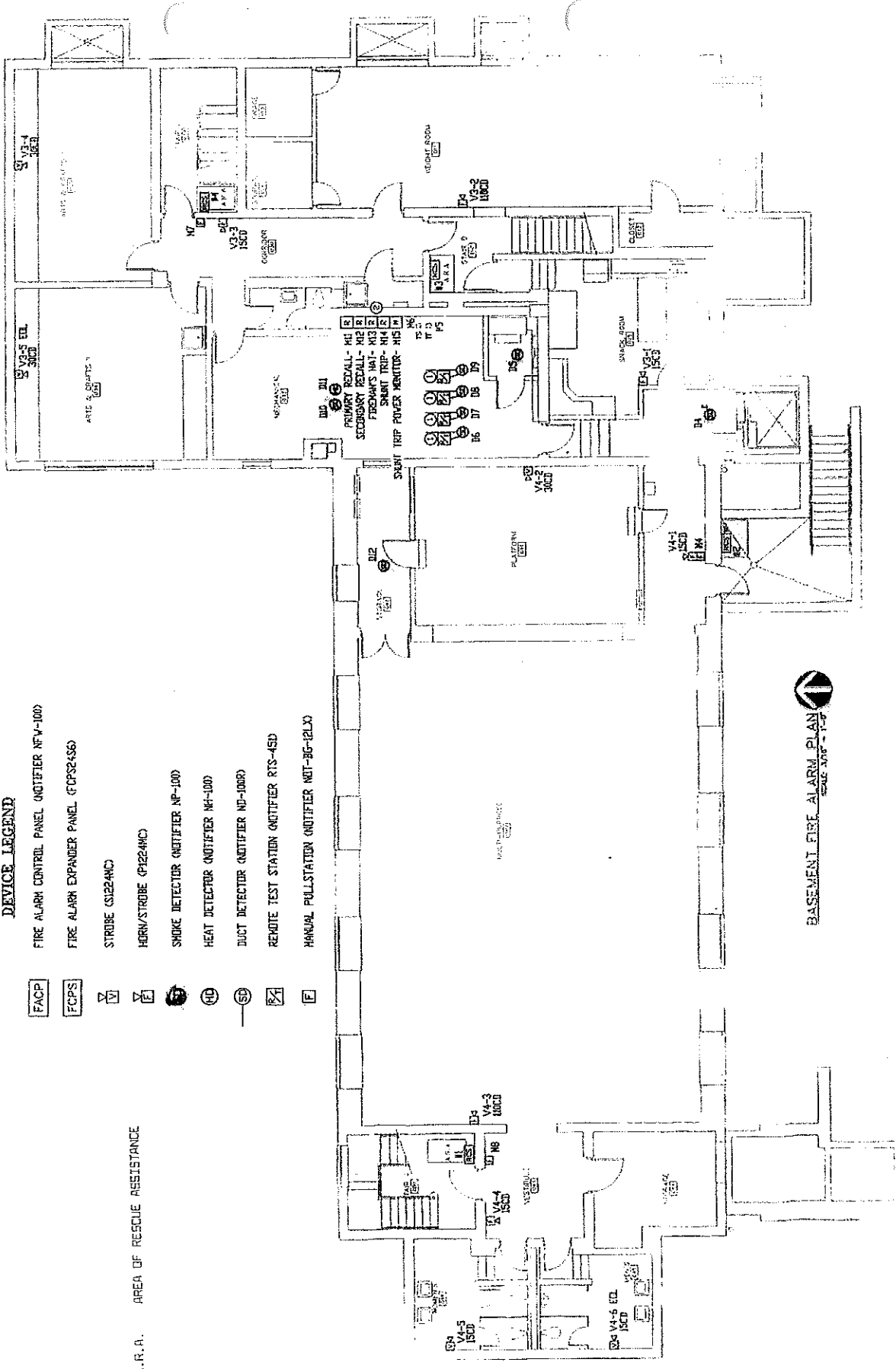
2085 LEE ROAD CLEVELAND HEIGHTS, OH 44118

STATE OF OHIO
DEPARTMENT OF COMMERCE
STATE FIRE MARSHAL
EMPLOYEE CERTIFICATION NUMBERS:
53-18-1310
CALVIN P. CURSI
#54-18-2248

DEVICE LEGEND

-  FIRE ALARM CONTROL PANEL (NOTIFIER NFV-100)
-  FIRE ALARM EXPANDER PANEL (FCPS2456)
-  STROBE (S1224HC)
-  HORN/STROBE (P1224HC)
-  SMOKE DETECTOR (NOTIFIER NP-100)
-  HEAT DETECTOR (NOTIFIER NH-100)
-  DUCT DETECTOR (NOTIFIER ND-100R)
-  REMOTE TEST STATION (NOTIFIER RTS-45D)
-  MANUAL PULLSTATION (NOTIFIER MPT-85-2LX)

A.R.A. AREA OF RESCUE ASSISTANCE



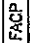
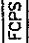

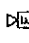





BASEMENT FIRE ALARM PLAN
SCALE: 1/8" = 1'-0"

HEIGH TS YOUTH CLUB

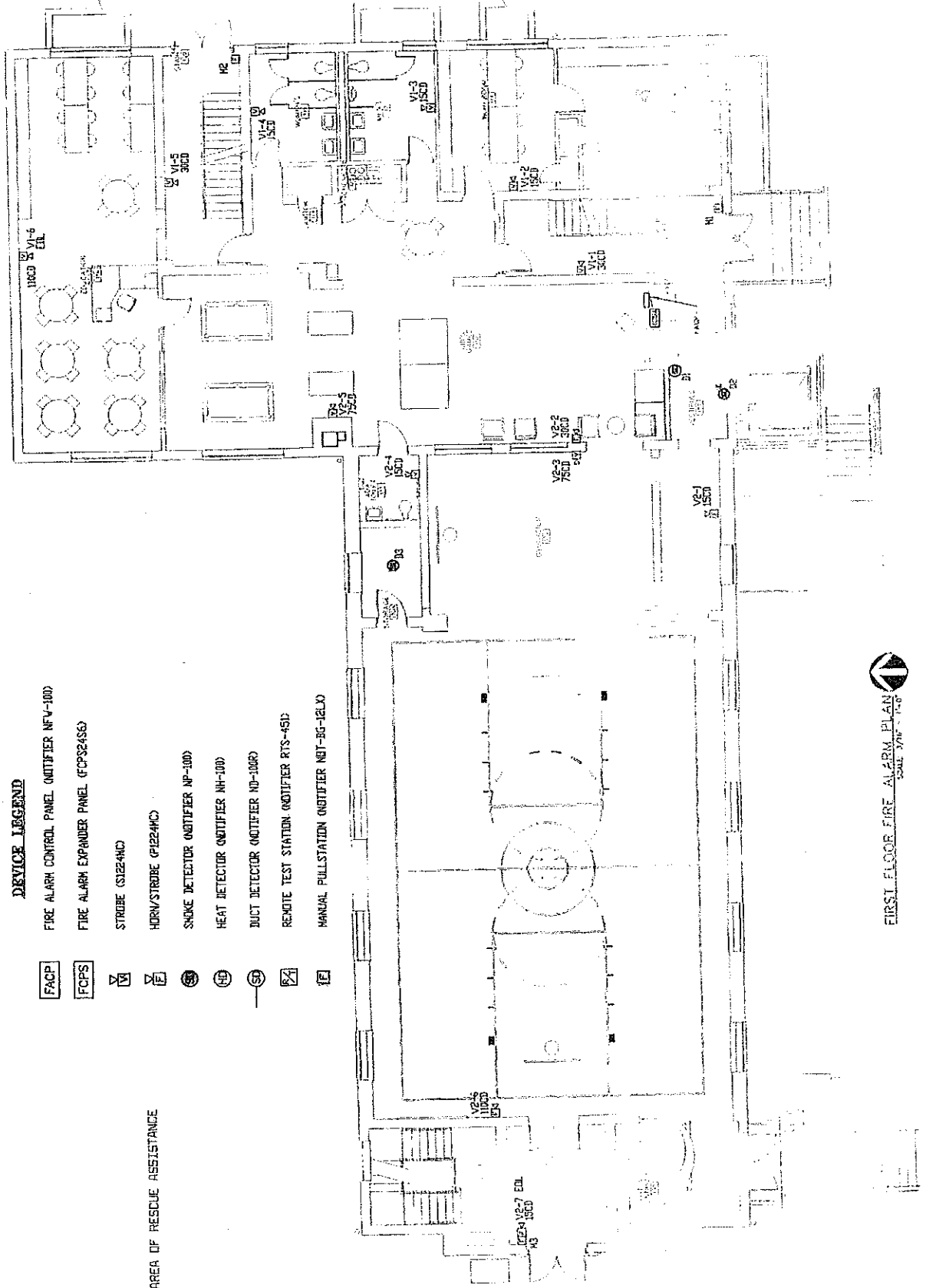
2065 LEE ROAD
CLEVELAND HEIGHTS, OH 44118

STATE OF OHIO
DEPARTMENT OF COMMERCE
STATE FIRE MARSHAL
EMPLOYEE CERTIFICATION NUMBERS:
PALADIN PROTECTIVE SYSTEMS INC.
53-18-1310
CALVIN P. CORSI
#54-18-2248

DEVICE LEGEND

-  FIRE ALARM CONTROL PANEL (NOTIFIER NFV-100)
-  FIRE ALARM EXPANDER PANEL (FCPS24SG)
-  STROBE (S12Z-4HC)
-  HORN/STROBE (P12Z-4HC)
-  SMOKE DETECTOR (NOTIFIER NP-100)
-  HEAT DETECTOR (NOTIFIER NH-100)
-  DUCT DETECTOR (NOTIFIER ND-100R)
-  REMOTE TEST STATION (NOTIFIER RTS-4SD)
-  MANUAL PULLSTATION (NOTIFIER NBT-RG-12LK)

A. R. A. AREA OF RESCUE ASSISTANCE



FIRST FLOOR FIRE ALARM PLAN
SCALE 3/8" = 1'-0"