



Cleveland Heights Partial Consent Decree 2017 Annual Report

March 30, 2018



1.0 Introduction

In 2017, the City of Cleveland Heights entered into a Partial Consent Decree (CD) with the U.S. Environmental Protection Agency (USEPA) and the U.S. Department of Justice (DOJ) to define and develop a plan to control sewer system overflows. The CD requires Cleveland Heights submit to USEPA and Ohio EPA, by March 31 of each year after the effective year of the report, an Annual Report that contains all information necessary to determine Cleveland Heights' compliance with the requirements of the Consent Decree.

1.1 Requirements of Annual Report

The Consent Decree provides requirements to be included in the Annual Report. **Table 1** summarizes the Annual report requirements and reference Sections for each requirement.

Table 1. Cleveland Heights Annual Report Requirements

Consent Decree Section Reference	Reporting Requirement
VII.a	A description of project and activities conducted during the reporting period to comply with the requirements of this Decree, a projection of work to be performed pursuant to this consent decree during the next reporting period, and notice of any anticipated failures to meet future requirements of the Consent Decree or approved plans.
VII.b	A trends analysis of the number, volume, duration, and causes of the City's SSOs for a rolling 24-month period updated to reflect the SSOs that occurred during the reporting period, including identification of any newly identified and/or previously unknown SSOs and Cross Connections discovered during the reporting period.
VII.c	A compilation of the information about each SSO during the applicable reporting period, as required by the Monthly SSO Reports described in Paragraph 44.c. along with identification of any cause or condition that contributed to each SSO and all remedial actions taken to mitigate the effects of each SSO or prevent SSO recurrence.
VII.d	Information that Cleveland Heights obtained or received (e.g. customer complaints) regarding discharges from private laterals, including any information received specifying the location of the discharge, and a description of the circumstances of the discharge.
VII.e	Description of any non-compliance with the requirements of the Consent Decree.
Appendix B Paragraph 7	Include a summary list of all documented training activities completed by how many of each category of employee during the applicable reporting period.
Appendix B Paragraph 16	As part of the Annual Report, Cleveland Heights shall provide: a. the total miles of unique sanitary lines cleaned during the reporting period b. total miles of sanitary sewer lines cleaned during the reporting period c. an identification of whether particular sewer segments were added or removed from HFC list. d. legible map depicting the locations cleaned as part of the routine cleaning program and HFC program.
Appendix B Paragraph 20	As part of the Annual Report, Cleveland Heights shall provide: a. the location and total miles of the portions of the sanitary sewer system inspected under the sewer system internal inspection program. b. the locations of the manholes inspected under the sewer system manhole inspection program.
Appendix B Paragraph 43, g.	Cleveland Heights shall report the number of enforcement actions initiated and concluded during the prior calendar year.

2.0 Overview of Projects and Activities Conducted and Planned

2.1 Activities Conducted in 2017

The Consent Decree was lodged in June 2017. All required 2017 activities were completed by Cleveland Heights in a timely manner. **Table 2** outlines the specific Consent Decree requirements, sections, and the date completed or EPA approval date associated with each requirement.

Table 2. 2017 Consent Decree Requirements Completed by Cleveland Heights

Requirement	Consent Decree Citation	Date Submitted
Have an operable, discoverable website dedicated to posting Consent Decree Deliverables	CD Main Text Section VII Paragraph 44	June 2017
Final Sewer Overflow Response Plan (SORP)	Appendix B Section C Paragraph 9	May 30, 2017
Install information management system (IMS) on city computers	Appendix B Section A Paragraph 4.a	November 9, 2017
Hire IT professional to implement IMS	Appendix B Section A Paragraph 4.b	June 26, 2017
Provide EPA a report that analyzes FOG and root problems	Appendix B Section A Paragraph 4.c	August 14, 2017
Carry out complete review of sewer maintenance spare parts inventory	Appendix B Section A Paragraph 4.e	August 29, 2017
Real-time annual SSO Monitoring	Appendix A Section III Paragraph 15	December 26, 2017
Have at least 2 staff complete training provided by IMS software provider	Appendix B Section A Paragraph 4.d	November 9, 2017
Develop and implement public information program for Sewer System	Appendix B Section A Paragraph 4.f	December 1, 2017
Have at least 7 employees complete training for assessment and certification of pipelines and manholes	Appendix B Section A Paragraph 4.h	December 1, 2017
Submit CMOM that satisfies Appendix B	CD Main Text Section V.C Paragraph 21	December 1, 2017
Submit SSER work plan for two-phased approach	CD Main Text Section V.B Paragraph 17	February 3, 2018

The NEORSD Heights Hilltop Local Sanitary Sewer Evaluation Study (HHI-LSSSES) completed field investigations in 2016 and 2017 in Cleveland Heights including manhole inspection, CCTV inspection, sewer cleaning, dye testing and smoke testing. Section 6 of this Annual Report includes more information on this work.

2.2 Activities Planned in 2018

Cleveland Heights will continue advancing Consent Decree activities in 2018. **Table 3** summarizes Consent Decree requirements and deliverables to be completed in 2018.

Table 3. 2018 Consent Decree Requirements to be Completed by Cleveland Heights

Requirement	Consent Decree Citation	Schedule
Submit System Characterization Monitoring Plan that satisfies Appendix A	CD Main Text Section V.D Paragraph 25	March 2, 2018 (submitted 3/2/18)
Submit System Modeling Plan that satisfies Section E and IV in Appendix A	CD Main Text Section V.E Paragraph 26	March 30, 2018
Fully implement and develop IMS system	Appendix B Section I Paragraph 28	December 1, 2018
Annual real time SSO Monitoring	Appendix A Section III Paragraph 15	End of 2018

Other activities planned for 2018 include the following:

- Beginning Phase 1 SSES activities per the SSES work plan including manhole inspections, pipe CCTV inspection, dye testing and smoke testing – new vector and CCTV inspection trucks are scheduled to arrive in May/June timeframe. A Quickview pole-mounted camera has also been purchased to support manhole investigations.
- Conducting flow monitoring in accordance the System Characterization Monitoring Plan and Real Time Monitoring Plan – 2018 monitoring will include both monitoring requirements in one monitoring program.
- Updating and extension of the sewer system model to support capacity assessment and analysis of alternatives – proposed updates and refinements of the existing model will

provide an analysis tool to develop SSO control alternatives and costs for development of the Integrated Overflow Control Master Plan.

- Continuing activities under the approved CMOM plan including finalizing staffing, continuing IMS implementation, staff training and collection system operations and maintenance

3.0 Known Sanitary Sewer Overflows

Figure 1 shows the known SSO structure locations in Cleveland Heights as of the end of 2017. The primary purpose of the partial Consent Decree is to identify the causes and cost-effective solutions to be implemented to control the SSOs and provide adequate capacity for anticipated peak wet weather flows.

3.1 2017 SSO Monitoring

As required by the Consent Decree, Cleveland Heights provides monitoring of all known SSOs by tethered block check after precipitation events over 0.25 inches. The City provides monthly monitoring reports of results of the tethered block monitoring. In October – December of 2017, Cleveland Heights performed required real time flow monitoring at 10 of the most active SSO locations using electronic recording flow meters at these locations. A summary of SSO activations recorded during 2017 can be found in **Appendix A** of this report. Tethered block monitoring is temporarily suspended at known SSOs when electronic flow monitoring is ongoing.

3.2 SSO Trends Analysis

Table 4 summarizes an activation trends analysis for the previous 24 months as required by the Consent Decree. Details of the information and associated 2017 rainfalls are provided in Appendix A. Bold text indicates the 2017 real time monitoring locations. The current analysis focuses on activations. SSO volume and duration will also be analyzed once the Cleveland Heights model is updated based on the proposed model extension and 2018 flow/rainfall monitoring and calibration. Model update is scheduled to begin in 2018 and be completed by April 1, 2019. Notes for Table 4 follow the table.

Figure 1. Known SSO Structures Status – 2017

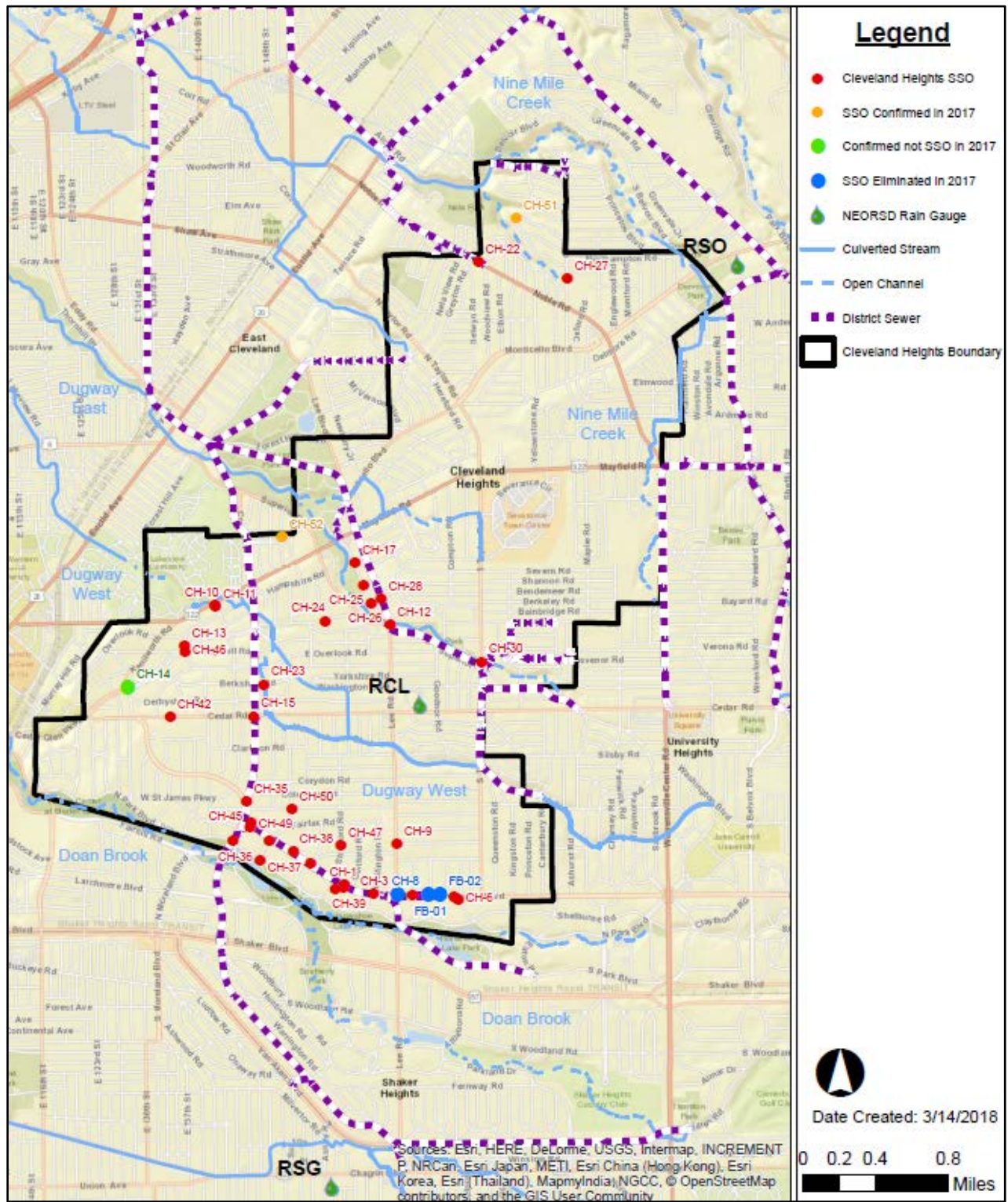


Table 4. SSO Activations for 2016 and 2017

SSO ID	Location (2017 real time monitoring locations in bold)	Receiving Stream	2016 Observed Activations	2017 Observed Activations
CH-1	Fairmount at North Woodland (3041)	Doan Brook	1	0
CH-2	Fairmount at North Woodland (3026)	Doan Brook	0	2
CH-3	Fairmount at Wellington	Doan Brook	1	1
CH-4	Fairmount at Dartmoor	Doan Brook	2	3
CH-5	Fairmount at South Fairmount	Doan Brook	3	0
CH-6	Fairmount at South Fairmount	Doan Brook	0	0
CH-7	Fairmount at South Fairmount	Doan Brook	4	0
CH-9	Bradford and Lee	Doan Brook	3	9
CH-10	Hampshire Lane at Mayfield (18")	Dugway Brook	1	0
CH-11	Hampshire Lane at Mayfield (36")	Dugway Brook	1	1
CH-12	Lee at Superior	Dugway Brook	5	8
CH-13	Hampshire Lane at Euclid Hts. Blvd	Doan Brook	2	3
CH-15	Coventry at Cedar	Doan Brook	1	2
CH-17	1685 Cumberland	Dugway Brook	1	2
CH-22	2225 Noble Road	9 Mile Creek	1	1
CH-23	Fairmount at North Woodland (3026)	Dugway Brook	0	6
CH-24	3003 Euclid Heights Blvd	Dugway Brook	0	1
CH-25	Cumberland/Somerton	Dugway Brook	3	2
CH-26	Euclid Heights Blvd/Cumberland	Dugway Brook	0	1
CH-27	Quilliams, N. of Randolph	9 Mile Creek	2	5
CH-28	Euclid Heights Blvd and Lee	Dugway Brook	4	3
CH-30	Taylor N of Superior	Dugway Brook	13	11
CH-32	Fairmount at Arlington	Doan Brook	2	0
CH-33	Fairmount at Fairfax	Doan Brook	12	11
CH-35	2393 Coventry, w. of Fairmount	Doan Brook	1	3
CH-36	North Park and Coventry	Doan Brook	1	2
CH-37	Fairfax at North Park	Doan Brook	0	1
CH-38	Fairmount at Marlboro	Doan Brook	0	2
CH-39	3012 North Woodland	Doan Brook	2	1
CH-42	12537 Cedar Road	Doan Brook	0	2
CH-45	2764 Fairmount, in Island	Doan Brook	3	1
CH-46	Edgehill at Euclid Heights Blvd	Doan Brook	3	0
CH-47	2528 Stratford, N. of Monmouth	Doan Brook	0	1
CH-49	2765 Fairmount, Just E. of Church	Doan Brook	1	0
CH-50	Scarborough at Lamberton	Doan Brook	2	4
CH-51	Langton at Atherstone	Nine Mile	-	2
CH-52	Eddington at Avondale	Dugway Brook	-	0

Notes for Table 4:

- 2016 activation information is based on HHI-LSSES flow monitoring, installed May-August 2016, and tethered block checks for storms greater than 0.25 inches total volume.
- 2017 activation information is based on real time flow monitoring October-December 2017 at 10 selected SSOs and tethered block checks.
- SSOs CH-30 and CH-50 were found during 2016. SSOs CH-51 and CH-52 were found during 2017.
- Previous SSO CH-14 located (Derbyshire at Euclid Hts. Blvd) was initially used as a real time monitoring location, but was subsequently determined via field investigation to be a sanitary flow divider instead of an SSO.
- Real time monitoring was suspended at SSO CH-51 on November 3, 2017 due to modem communication problems at the location. This flow meter was moved to the SSO CH-23 location on the same day.

3.3 Recently Identified SSOs and SSO Status Changes

In 2017, two additional SSO structures were identified during HHI-LSSES project field work. These two SSOs are CH-51 at Langton and Atherstone and CH-52 at Eddington and Avondale. These SSOs were reported to the NEORSD Community Discharge Permit Program Manager and USEPA as directed by the Sewer Overflow Response Plan and have been added to the monitoring schedule for Cleveland Heights moving forward.

SSO CH-14 (Derbyshire at Euclid Hts. Blvd) was determined to be a sanitary sewer flow divider instead of an SSO based on field investigation completed during the HHI-LSSES project, and has been removed from the list of known SSOs.

4.0 Customer Complaints

Cleveland Heights tracks phones calls from residents and follow-up house calls and logs them in a database. In 2017, Cleveland Heights Utilities Department received approximately 400 calls reporting various water related issues on private property. Most calls were related to backups in basements and in most cases the backups were related to unmaintained sanitary and/or storm sewer laterals on the property as opposed to mainline sewer issues. **Appendix B** of this report shows the listing of customer calls and notes from the responding crew for the 2017 calls.

5.0 Non-Compliance

The City of Cleveland Heights has met all Consent Decree requirements for the 2017 reporting period.

6.0 Training Activities

In 2017, seven employees completed National Association of Sanitary Sewer Companies, Pipeline Assessment Certification Program (PACP), Manhole Assessment Certification Program (MACP), and Lateral Assessment Certification Program (LACP) training as required by the Consent Decree.

In January 2017, 15 employees most of whom work in the Sewer Department also participated in Safety Zone Training which included training on setting up safe work areas, signage and traffic control. This will support safe implementation of upcoming SSES and CMOM field activities.

7.0 Cleaning and Inspection Statistics

In 2016 and 2017, Cuyahoga County DPW and HHI-LSSES crews performed field activities in Cleveland Heights as summarized in **Table 5**. **Figure 2** provides a map of the field activity locations.

Table 5. Field Work Activities and Quantities in Cleveland Heights

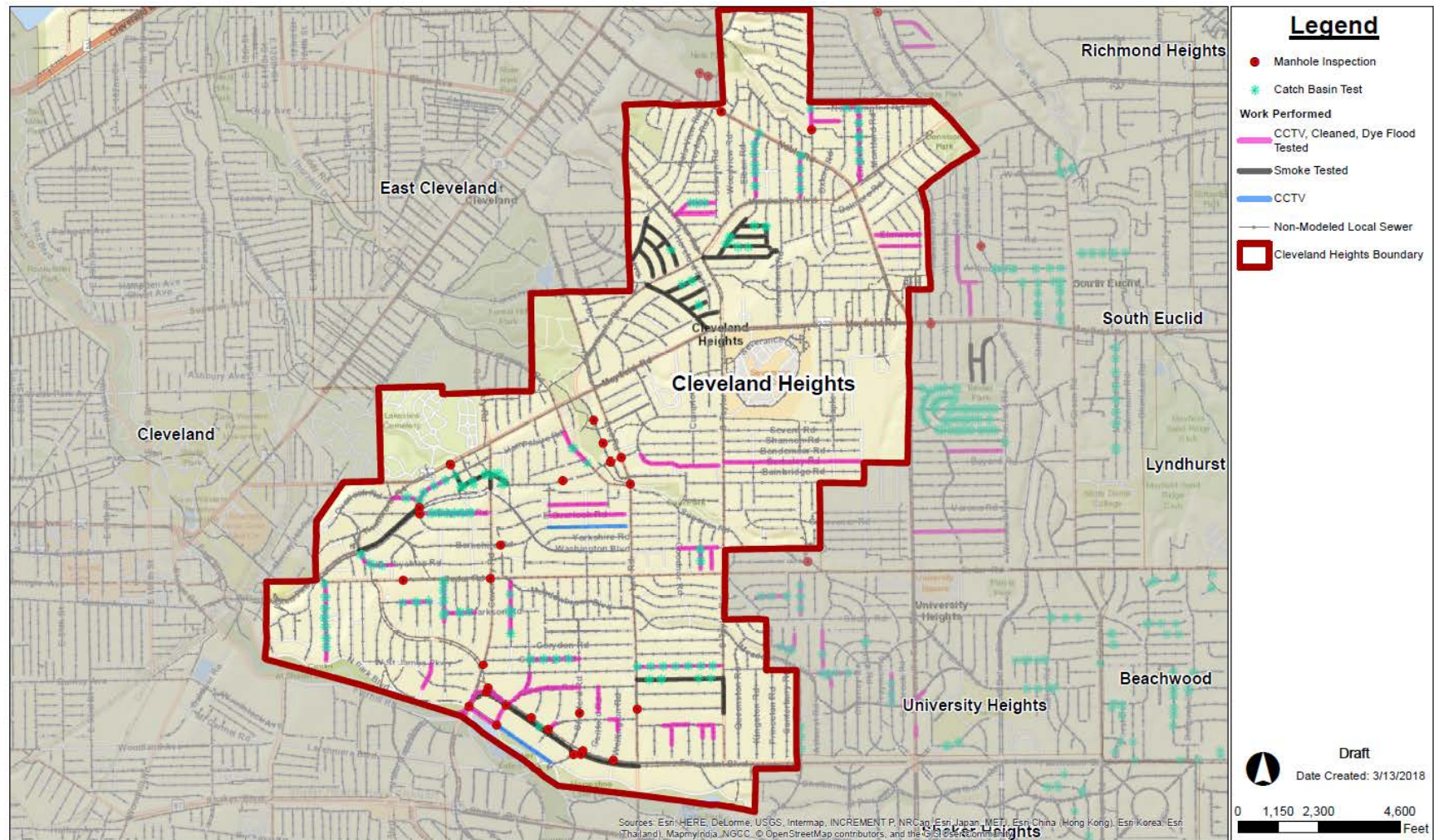
Activity	Quantity Completed
CCTV inspection, miles	10.2
Sanitary sewer cleaned, miles	11.4
Dyed water testing, miles	9.8
Smoke testing, miles	6.5
Catch basin testing, #	139
MACP manhole inspections, #	30

The cleaning and inspection High Frequency Cleaning (HFC) list was updated for Cleveland Heights during the CMOM development in 2017. Future Annual Reports will provide data on locations that have been added or removed from the HFC list based on SSES investigation or rehabilitation locations.

8.0 Enforcement Actions

No enforcement actions were required during the 2017 reporting period.

Figure 2. Field Work Performed in Cleveland Heights in 2016-2017



Appendix A – 2017 SSO Activation Summary

					Event 1				Event 2				Event 3			
					1/3/2017				1/12/2017				1/17/2017			
					0.76	in	0.18	in/hr	1.43	in	0.48	in/hr	0.68	in	0.16	in/hr
SSO	Receiving Stream	# of Monitored Events	# of Recorded Activations	% of Events with Activation	Tethered Block or Flow Meter	Activation Y/N?			Tethered Block or Flow Meter	Activation Y/N?			Tethered Block or Flow Meter	Activation Y/N?		
CH-1	Doan Brook	29	0	0%	Block	No			Block	No			Block	No		
CH-2	Doan Brook	29	2	7%	Block	No			Block	No			Block	No		
CH-3	Doan Brook	29	1	3%	Block	No			Block	No			Block	No		
CH-4	Doan Brook	29	3	10%	Block	No			Block	No			Block	No		
CH-5	Doan Brook	23	0	0%	Not Checked	-			Not Checked	-			Not Checked	-		
CH-6	Doan Brook	23	0	0%	Not Checked	-			Not Checked	-			Not Checked	-		
CH-7	Doan Brook	23	0	0%	Not Checked	-			Not Checked	-			Not Checked	-		
CH-8	Controlled by Fairmount Blvd Relief Sewer. To be checked during 2018 monitoring.															
CH-9	Doan Brook	29	9	31%	Block	No			Block	Yes			Block	No		
CH-10	Dugway Brook	29	0	0%	Block	No			Block	No			Block	No		
CH-11	Dugway Brook	29	1	3%	Block	No			Block	No			Block	No		
CH-12	Dugway Brook	29	8	28%	Block	No			Block	Yes			Block	No		
CH-13	Doan Brook	28	3	11%	Block	No			Block	No			Block	No		
CH-14	Field check confirmed no SSO connection at this structure															
CH-15	Doan Brook	29	2	7%	Block	No			Block	No			Block	No		
CH-17	Dugway Brook	29	2	7%	Block	No			Block	No			Block	No		
CH-22	9 Mile Creek	24	1	4%	Not Checked	-			Not Checked	-			Not Checked	-		
CH-23	Dugway Brook	27	6	22%	Block	No			Block	No			Block	No		
CH-24	Dugway Brook	29	1	3%	Block	No			Block	No			Block	No		
CH-25	Dugway Brook	29	2	7%	Block	No			Block	No			Block	No		
CH-26	Dugway Brook	29	1	3%	Block	No			Block	No			Block	No		
CH-27	9 Mile Creek	29	5	17%	Block	No			Block	No			Block	No		
CH-28	Dugway Brook	25	3	12%	Block	No			Block	Yes			Block	No		
CH-30	Dugway Brook	25	11	44%	-	-			-	-			-	-		
CH-32	Doan Brook	29	0	0%	Block	No			Block	No			Block	No		
CH-33	Doan Brook	28	11	39%	Block	Yes			Block	No			Block	No		
CH-35	Doan Brook	28	3	11%	Block	Yes			Block	No			Block	No		
CH-36	Doan Brook	29	2	7%	Block	No			Block	No			Block	No		
CH-37	Doan Brook	29	1	3%	Block	No			Block	No			Block	No		
CH-38	Doan Brook	29	2	7%	Block	No			Block	No			Block	No		
CH-39	Doan Brook	25	1	4%	Block	No			Block	No			Block	No		
CH-42	Doan Brook	25	2	8%	Block	No			Block	No			Block	No		
CH-45	Doan Brook	28	1	4%	Block	No			Block	No			Block	No		
CH-46	Doan Brook	28	0	0%	Block	No			Block	No			Block	No		
CH-47	Doan Brook	29	1	3%	Block	No			Block	No			Block	No		
CH-49	Doan Brook	28	0	0%	Block	No			Block	No			Block	No		
CH-50	Doan Brook	21	4	19%	-	-			-	-			-	-		
CH-51	Nine Mile	18	2	11%	-	-			-	-			-	-		
CH-52	Dugway Brook	17	0	0%	-	-			-	-			-	-		
* Starting in October Cleveland Heights Rain Gauge was deactivated, after that Shaker Heights (SH) and South Euclid (SE) rain gauges were used as denoted.																
2017 Real time monitoring of SSOs conducted from September 28, 2017 to January 3, 2018 at locations in bold font																
1. SSO CH-4 activations after Fairmount Blvd Relief Sewer Project believed to be caused by storm sewer overflowing to sanitary sewer, or due to debris. To be checked during 2018 flow monitoring.																

					Event 4				Event 5				Event 6			
					2/7/2017				3/1/2017				3/7/2017			
					1.32	in	0.32	in/hr	0.67	in	0.36	in/hr	0.60	in	0.19	in/hr
SSO	Receiving Stream	# of Monitored Events	# of Recorded Activations	% of Events with Activation	Tethered Block or Flow Meter	Activation Y/N?	Tethered Block or Flow Meter	Activation Y/N?	Tethered Block or Flow Meter	Activation Y/N?	Tethered Block or Flow Meter	Activation Y/N?	Tethered Block or Flow Meter	Activation Y/N?	Tethered Block or Flow Meter	Activation Y/N?
CH-1	Doan Brook	29	0	0%	Block	No	Block	No	Block	No	Block	No	Block	No	Block	No
CH-2	Doan Brook	29	2	7%	Block	No	Block	No	Block	No	Block	No	Block	No	Block	No
CH-3	Doan Brook	29	1	3%	Block	No	Block	No	Block	No	Block	No	Block	No	Block	No
CH-4	Doan Brook	29	3	10%	Block	No	Block	No	Block	No	Block	No	Block	No	Block	No
CH-5	Doan Brook	23	0	0%	Not Checked	-	Not Checked	-	Not Checked	-	Not Checked	-	Not Checked	-	Not Checked	-
CH-6	Doan Brook	23	0	0%	Not Checked	-	Not Checked	-	Not Checked	-	Not Checked	-	Not Checked	-	Not Checked	-
CH-7	Doan Brook	23	0	0%	Not Checked	-	Not Checked	-	Not Checked	-	Not Checked	-	Not Checked	-	Not Checked	-
CH-8	Controlled by Fairmount Blvd Relief Sewer. To be checked during 2018															
CH-9	Doan Brook	29	9	31%	Block	No	Block	No	Block	No	Block	No	Block	No	Block	No
CH-10	Dugway Brook	29	0	0%	Block	No	Block	No	Block	No	Block	No	Block	No	Block	No
CH-11	Dugway Brook	29	1	3%	Block	No	Block	No	Block	No	Block	No	Block	No	Block	No
CH-12	Dugway Brook	29	8	28%	Block	No	Block	No	Block	No	Block	No	Block	No	Block	No
CH-13	Doan Brook	28	3	11%	Block	No	Block	No	Block	No	Block	No	Block	No	Block	No
CH-14	Field check confirmed no SSO connection at this structure															
CH-15	Doan Brook	29	2	7%	Block	No	Block	No	Block	No	Block	No	Block	No	Block	No
CH-17	Dugway Brook	29	2	7%	Block	No	Block	No	Block	No	Block	No	Block	No	Block	No
CH-22	9 Mile Creek	24	1	4%	Not Checked	-	Block	Yes	Block	Yes	Block	Yes	Block	No	Block	No
CH-23	Dugway Brook	27	6	22%	Block	No	Block	No	Block	No	Block	No	Block	No	Block	No
CH-24	Dugway Brook	29	1	3%	Block	No	Block	No	Block	No	Block	No	Block	No	Block	No
CH-25	Dugway Brook	29	2	7%	Block	No	Block	No	Block	No	Block	No	Block	No	Block	No
CH-26	Dugway Brook	29	1	3%	Block	No	Block	No	Block	No	Block	No	Block	No	Block	No
CH-27	9 Mile Creek	29	5	17%	Block	No	Block	No	Block	No	Block	No	Block	No	Block	No
CH-28	Dugway Brook	25	3	12%	Block	No	Block	No	Block	No	Block	No	Block	No	Block	No
CH-30	Dugway Brook	25	11	44%	-	-	Block	Yes	Block	Yes	Block	Yes	Block	No	Block	No
CH-32	Doan Brook	29	0	0%	Block	No	Block	No	Block	No	Block	No	Block	No	Block	No
CH-33	Doan Brook	28	11	39%	Block	No	Block	No	Block	No	Block	No	Block	No	Block	No
CH-35	Doan Brook	28	3	11%	Block	No	Block	No	Block	No	Block	No	Block	No	Block	No
CH-36	Doan Brook	29	2	7%	Block	Yes	Block	No	Block	No	Block	No	Block	No	Block	No
CH-37	Doan Brook	29	1	3%	Block	Yes	Block	No	Block	No	Block	No	Block	No	Block	No
CH-38	Doan Brook	29	2	7%	Block	No	Block	No	Block	No	Block	No	Block	Yes	Block	Yes
CH-39	Doan Brook	25	1	4%	Block	No	Block	No	Block	No	Block	No	Block	No	Block	No
CH-42	Doan Brook	25	2	8%	Block	No	Block	No	Block	No	Block	No	Block	No	Block	No
CH-45	Doan Brook	28	1	4%	Block	No	Block	No	Block	No	Block	No	Block	No	Block	No
CH-46	Doan Brook	28	0	0%	Block	No	Block	No	Block	No	Block	No	Block	No	Block	No
CH-47	Doan Brook	29	1	3%	Block	No	Block	No	Block	No	Block	No	Block	No	Block	No
CH-49	Doan Brook	28	0	0%	Block	No	Block	No	Block	No	Block	No	Block	No	Block	No
CH-50	Doan Brook	21	4	19%	-	-	Block	Yes	Block	Yes	Block	Yes	Block	Yes	Block	Yes
CH-51	Nine Mile	18	2	11%	-	-	-	-	-	-	-	-	-	-	-	-
CH-52	Dugway Brook	17	0	0%	-	-	-	-	-	-	-	-	-	-	-	-
* Starting in October Cleveland Heights Rain Gauge was deactivated, after that Shaker Heights (SH) and South Euclid (SE) rain gauges were used as denoted.																
2017 Real time monitoring of SSOs conducted from September 28, 2017 to Janu																
1. SSO CH-4 activations after Fairmount Blvd Relief Sewer Project believed to be c																

					Event 7				Event 8				Event 9			
					3/26/2017				3/31/2017				4/6/2017			
					0.30	in	0.23	in/hr	0.88	in	0.15	in/hr	0.53	in	0.21	in/hr
SSO	Receiving Stream	# of Monitored Events	# of Recorded Activations	% of Events with Activation	Tethered Block or Flow Meter	Activation Y/N?			Tethered Block or Flow Meter	Activation Y/N?			Tethered Block or Flow Meter	Activation Y/N?		
CH-1	Doan Brook	29	0	0%	Block	No			Block	No			Block	No		
CH-2	Doan Brook	29	2	7%	Block	No			Block	No			Block	No		
CH-3	Doan Brook	29	1	3%	Block	No			Block	No			Block	No		
CH-4	Doan Brook	29	3	10%	Block	No			Block	Yes ¹			Block	No		
CH-5	Doan Brook	23	0	0%	Block	No			Block	No			Block	No		
CH-6	Doan Brook	23	0	0%	Block	No			Block	No			Block	No		
CH-7	Doan Brook	23	0	0%	Block	No			Block	No			Block	No		
CH-8	Controlled by Fairmount Blvd Relief Sewer. To be checked during 2018															
CH-9	Doan Brook	29	9	31%	Block	No			Block	No			Block	No		
CH-10	Dugway Brook	29	0	0%	Block	No			Block	No			Block	No		
CH-11	Dugway Brook	29	1	3%	Block	No			Block	No			Block	No		
CH-12	Dugway Brook	29	8	28%	Block	No			Block	No			Block	No		
CH-13	Doan Brook	28	3	11%	Block	No			Block	No			Block	No		
CH-14	Field check confirmed no SSO connection at this structure															
CH-15	Doan Brook	29	2	7%	Block	No			Block	No			Block	No		
CH-17	Dugway Brook	29	2	7%	Block	Yes			Block	No			Block	Yes		
CH-22	9 Mile Creek	24	1	4%	Block	No			Block	No			Block	No		
CH-23	Dugway Brook	27	6	22%	Block	Yes			Block	No			Block	No		
CH-24	Dugway Brook	29	1	3%	Block	No			Block	No			Block	No		
CH-25	Dugway Brook	29	2	7%	Block	Yes			Block	No			Block	No		
CH-26	Dugway Brook	29	1	3%	Block	No			Block	No			Block	No		
CH-27	9 Mile Creek	29	5	17%	Block	No			Block	No			Block	No		
CH-28	Dugway Brook	25	3	12%	Block	No			Block	No			Block	No		
CH-30	Dugway Brook	25	11	44%	Block	No			Block	No			Block	No		
CH-32	Doan Brook	29	0	0%	Block	No			Block	No			Block	No		
CH-33	Doan Brook	28	11	39%	Block	No			Block	No			Block	No		
CH-35	Doan Brook	28	3	11%	Block	No			Block	No			Block	No		
CH-36	Doan Brook	29	2	7%	Block	No			Block	No			Block	No		
CH-37	Doan Brook	29	1	3%	Block	No			Block	No			Block	No		
CH-38	Doan Brook	29	2	7%	Block	No			Block	No			Block	No		
CH-39	Doan Brook	25	1	4%	Block	No			Block	No			Block	No		
CH-42	Doan Brook	25	2	8%	Block	No			Block	No			Block	No		
CH-45	Doan Brook	28	1	4%	Block	No			Block	No			Block	No		
CH-46	Doan Brook	28	0	0%	Block	No			Block	No			Block	No		
CH-47	Doan Brook	29	1	3%	Block	No			Block	No			Block	Yes		
CH-49	Doan Brook	28	0	0%	Block	No			Block	No			Block	No		
CH-50	Doan Brook	21	4	19%	Block	No			Block	No			Block	No		
CH-51	Nine Mile	18	2	11%	-	-			-	-			-	-		
CH-52	Dugway Brook	17	0	0%	-	-			-	-			-	-		
* Starting in October Cleveland Heights Rain Gauge was deactivated, after that Shaker Heights (SH) and South Euclid (SE) rain gauges were used as denoted.																
2017 Real time monitoring of SSOs conducted from September 28, 2017 to Janu																
1. SSO CH-4 activations after Fairmount Blvd Relief Sewer Project believed to be c																

					Event 10				Event 11				Event 12			
					4/19/2017				5/1/2017				5/21/2017			
					1.02	in	0.77	in/hr	0.78	in	0.72	in/hr	0.44	in	0.23	in/hr
SSO	Receiving Stream	# of Monitored Events	# of Recorded Activations	% of Events with Activation	Tethered Block or Flow Meter	Activation Y/N?			Tethered Block or Flow Meter	Activation Y/N?			Tethered Block or Flow Meter	Activation Y/N?		
CH-1	Doan Brook	29	0	0%	Block	No			Block	No			Block	No		
CH-2	Doan Brook	29	2	7%	Block	No			Block	No			Block	No		
CH-3	Doan Brook	29	1	3%	Block	No			Block	No			Block	No		
CH-4	Doan Brook	29	3	10%	Block	No			Block	No			Block	No		
CH-5	Doan Brook	23	0	0%	Block	No			Block	No			Block	No		
CH-6	Doan Brook	23	0	0%	Block	No			Block	No			Block	No		
CH-7	Doan Brook	23	0	0%	Block	No			Block	No			Block	No		
CH-8	Controlled by Fairmount Blvd Relief Sewer. To be checked during 2018															
CH-9	Doan Brook	29	9	31%	Block	No			Block	No			Block	No		
CH-10	Dugway Brook	29	0	0%	Block	No			Block	No			Block	No		
CH-11	Dugway Brook	29	1	3%	Block	No			Block	No			Block	No		
CH-12	Dugway Brook	29	8	28%	Block	No			Block	No			Block	No		
CH-13	Doan Brook	28	3	11%	Block	No			Block	Yes			Block	No		
CH-14	Field check confirmed no SSO connection at this structure															
CH-15	Doan Brook	29	2	7%	Block	No			Block	Yes			Block	No		
CH-17	Dugway Brook	29	2	7%	Block	No			Block	No			Block	No		
CH-22	9 Mile Creek	24	1	4%	Block	No			Block	No			Block	No		
CH-23	Dugway Brook	27	6	22%	Block	Yes			Block	No			Block	No		
CH-24	Dugway Brook	29	1	3%	Block	No			Block	No			Block	No		
CH-25	Dugway Brook	29	2	7%	Block	No			Block	No			Block	No		
CH-26	Dugway Brook	29	1	3%	Block	No			Block	No			Block	No		
CH-27	9 Mile Creek	29	5	17%	Block	No			Block	No			Block	No		
CH-28	Dugway Brook	25	3	12%	Block	No			Block	No			Block	No		
CH-30	Dugway Brook	25	11	44%	Block	No			Block	No			Block	No		
CH-32	Doan Brook	29	0	0%	Block	No			Block	No			Block	No		
CH-33	Doan Brook	28	11	39%	Block	Yes			Block	Yes			Block	No		
CH-35	Doan Brook	28	3	11%	Block	No			Block	No			Block	No		
CH-36	Doan Brook	29	2	7%	Block	No			Block	No			Block	No		
CH-37	Doan Brook	29	1	3%	Block	No			Block	No			Block	No		
CH-38	Doan Brook	29	2	7%	Block	No			Block	No			Block	No		
CH-39	Doan Brook	25	1	4%	Block	No			Block	No			Block	No		
CH-42	Doan Brook	25	2	8%	Block	Yes			Block	No			Block	No		
CH-45	Doan Brook	28	1	4%	Block	No			Block	No			Block	No		
CH-46	Doan Brook	28	0	0%	Block	No			Block	No			Block	No		
CH-47	Doan Brook	29	1	3%	Block	No			Block	No			Block	No		
CH-49	Doan Brook	28	0	0%	Block	No			Block	No			Block	No		
CH-50	Doan Brook	21	4	19%	Block	No			Block	No			Block	No		
CH-51	Nine Mile	18	2	11%	-	-			-	-			Block	No		
CH-52	Dugway Brook	17	0	0%	-	-			-	-			Block	No		
* Starting in October Cleveland Heights Rain Gauge was deactivated, after that Shaker Heights (SH) and South Euclid (SE) rain gauges were used as denoted.																
2017 Real time monitoring of SSOs conducted from September 28, 2017 to Janu																
1. SSO CH-4 activations after Fairmount Blvd Relief Sewer Project believed to be c																

					Event 13				Event 14				Event 15			
					5/25/2017				6/23/2017				6/30/2017			
					1.20	in	0.27	in/hr	1.18	in	0.51	in/hr	1.78	in	1.45	in/hr
SSO	Receiving Stream	# of Monitored Events	# of Recorded Activations	% of Events with Activation	Tethered Block or Flow Meter	Activation Y/N?			Tethered Block or Flow Meter	Activation Y/N?			Tethered Block or Flow Meter	Activation Y/N?		
CH-1	Doan Brook	29	0	0%	Block	No			Block	No			Block	No		
CH-2	Doan Brook	29	2	7%	Block	No			Block	No			Block	Yes		
CH-3	Doan Brook	29	1	3%	Block	No			Block	No			Block	Yes		
CH-4	Doan Brook	29	3	10%	Block	No			Block	No			Block	Yes ¹		
CH-5	Doan Brook	23	0	0%	Block	No			Block	No			Block	No		
CH-6	Doan Brook	23	0	0%	Block	No			Block	No			Block	No		
CH-7	Doan Brook	23	0	0%	Block	No			Block	No			Block	No		
CH-8	Controlled by Fairmount Blvd Relief Sewer. To be checked during 2018															
CH-9	Doan Brook	29	9	31%	Block	No			Block	No			Block	No		
CH-10	Dugway Brook	29	0	0%	Block	No			Block	No			Block	No		
CH-11	Dugway Brook	29	1	3%	Block	No			Block	No			Block	Yes		
CH-12	Dugway Brook	29	8	28%	Block	No			Block	No			Block	Yes		
CH-13	Doan Brook	28	3	11%	Block	No			Block	No			Block	Yes		
CH-14	Field check confirmed no SSO connection at this structure															
CH-15	Doan Brook	29	2	7%	Block	No			Block	No			Block	Yes		
CH-17	Dugway Brook	29	2	7%	Block	No			Block	No			Block	No		
CH-22	9 Mile Creek	24	1	4%	Block	No			Block	No			Block	No		
CH-23	Dugway Brook	27	6	22%	Block	No			Block	No			Block	No		
CH-24	Dugway Brook	29	1	3%	Block	No			Block	No			Block	Yes		
CH-25	Dugway Brook	29	2	7%	Block	No			Block	No			Block	Yes		
CH-26	Dugway Brook	29	1	3%	Block	No			Block	No			Block	Yes		
CH-27	9 Mile Creek	29	5	17%	Block	No			Block	No			Block	No		
CH-28	Dugway Brook	25	3	12%	Block	No			Block	No			Block	Yes		
CH-30	Dugway Brook	25	11	44%	Block	No			Block	No			Block	Yes		
CH-32	Doan Brook	29	0	0%	Block	No			Block	No			Block	No		
CH-33	Doan Brook	28	11	39%	Block	No			Block	No			Block	Yes		
CH-35	Doan Brook	28	3	11%	Block	No			Block	No			Block	Yes		
CH-36	Doan Brook	29	2	7%	Block	No			Block	No			Block	Yes		
CH-37	Doan Brook	29	1	3%	Block	No			Block	No			Block	No		
CH-38	Doan Brook	29	2	7%	Block	No			Block	No			Block	Yes		
CH-39	Doan Brook	25	1	4%	Block	No			Block	No			Block	No		
CH-42	Doan Brook	25	2	8%	Block	No			Block	No			Block	No		
CH-45	Doan Brook	28	1	4%	Block	No			Block	No			Block	Yes		
CH-46	Doan Brook	28	0	0%	Block	No			Block	No			Block	No		
CH-47	Doan Brook	29	1	3%	Block	No			Block	No			Block	No		
CH-49	Doan Brook	28	0	0%	Block	No			Block	No			Block	No		
CH-50	Doan Brook	21	4	19%	Block	No			Block	No			Block	Yes		
CH-51	Nine Mile	18	2	11%	Block	No			Block	No			Block	No		
CH-52	Dugway Brook	17	0	0%	Block	No			Block	No			Block	No		
* Starting in October Cleveland Heights Rain Gauge was deactivated, after that Shaker Heights (SH) and South Euclid (SE) rain gauges were used as denoted.																
2017 Real time monitoring of SSOs conducted from September 28, 2017 to Janu																
1. SSO CH-4 activations after Fairmount Blvd Relief Sewer Project believed to be c																

					Event 16				Event 17				Event 18			
					7/10/2017				7/22/2017				8/3/2017			
					0.44	in	0.34	in/hr	0.62	in	0.5	in/hr	0.43	in	0.34	in/hr
SSO	Receiving Stream	# of Monitored Events	# of Recorded Activations	% of Events with Activation	Tethered Block or Flow Meter	Activation Y/N?			Tethered Block or Flow Meter	Activation Y/N?			Tethered Block or Flow Meter	Activation Y/N?		
CH-1	Doan Brook	29	0	0%	Block	No			Block	No			Block	No		
CH-2	Doan Brook	29	2	7%	Block	Yes			Block	No			Block	No		
CH-3	Doan Brook	29	1	3%	Block	No			Block	No			Block	No		
CH-4	Doan Brook	29	3	10%	Block	No			Block	No			Block	No		
CH-5	Doan Brook	23	0	0%	Block	No			Block	No			Block	No		
CH-6	Doan Brook	23	0	0%	Block	No			Block	No			Block	No		
CH-7	Doan Brook	23	0	0%	Block	No			Block	No			Block	No		
CH-8	Controlled by Fairmount Blvd Relief Sewer. To be checked during 2018															
CH-9	Doan Brook	29	9	31%	Block	No			Block	No			Block	No		
CH-10	Dugway Brook	29	0	0%	Block	No			Block	No			Block	No		
CH-11	Dugway Brook	29	1	3%	Block	No			Block	No			Block	No		
CH-12	Dugway Brook	29	8	28%	Block	No			Block	No			Block	No		
CH-13	Doan Brook	28	3	11%	Block	No			Block	No			Block	Yes		
CH-14	Field check confirmed no SSO connection at this structure															
CH-15	Doan Brook	29	2	7%	Block	No			Block	No			Block	No		
CH-17	Dugway Brook	29	2	7%	Block	No			Block	No			Block	No		
CH-22	9 Mile Creek	24	1	4%	Block	No			Not Checked	-			Block	No		
CH-23	Dugway Brook	27	6	22%	Block	No			Block	No			Block	No		
CH-24	Dugway Brook	29	1	3%	Block	No			Block	No			Block	No		
CH-25	Dugway Brook	29	2	7%	Block	No			Block	No			Block	No		
CH-26	Dugway Brook	29	1	3%	Block	No			Block	No			Block	No		
CH-27	9 Mile Creek	29	5	17%	Block	No			Block	No			Block	No		
CH-28	Dugway Brook	25	3	12%	Block	No			Block	No			Block	No		
CH-30	Dugway Brook	25	11	44%	Block	Yes			Block	No			Block	No		
CH-32	Doan Brook	29	0	0%	Block	No			Block	No			Block	No		
CH-33	Doan Brook	28	11	39%	Block	No			Block	No			Block	No		
CH-35	Doan Brook	28	3	11%	Block	No			Block	No			Block	Yes		
CH-36	Doan Brook	29	2	7%	Block	No			Block	No			Block	No		
CH-37	Doan Brook	29	1	3%	Block	No			Block	No			Block	No		
CH-38	Doan Brook	29	2	7%	Block	No			Block	No			Block	No		
CH-39	Doan Brook	25	1	4%	Block	No			Block	No			Block	No		
CH-42	Doan Brook	25	2	8%	Block	No			Block	No			Block	No		
CH-45	Doan Brook	28	1	4%	Block	No			Block	No			Block	No		
CH-46	Doan Brook	28	0	0%	Block	No			Block	No			Block	No		
CH-47	Doan Brook	29	1	3%	Block	No			Block	No			Block	No		
CH-49	Doan Brook	28	0	0%	Block	No			Block	No			Block	No		
CH-50	Doan Brook	21	4	19%	Block	No			Block	No			Block	Yes		
CH-51	Nine Mile	18	2	11%	Block	No			Block	No			Block	No		
CH-52	Dugway Brook	17	0	0%	Block	No			Block	No			Block	No		
* Starting in October Cleveland Heights Rain Gauge was deactivated, after that Shaker Heights (SH) and South Euclid (SE) rain gauges were used as denoted.																
2017 Real time monitoring of SSOs conducted from September 28, 2017 to Janu																
1. SSO CH-4 activations after Fairmount Blvd Relief Sewer Project believed to be c																

					Event 19				Event 20				Event 21			
					8/11/2017				9/5/2017				10/5/2017			
					0.53	in	0.46	in/hr	0.26	in	0.13	in/hr	0.33	in (SH)	0.17	in/hr (SH)
SSO	Receiving Stream	# of Monitored Events	# of Recorded Activations	% of Events with Activation	Tethered Block or Flow Meter	Activation Y/N?	Tethered Block or Flow Meter	Activation Y/N?	Tethered Block or Flow Meter	Activation Y/N?	Tethered Block or Flow Meter	Activation Y/N?	0.07	in (SE)	0.04	in/hr (SE)
CH-1	Doan Brook	29	0	0%	Block	No	Block	No	Block	No	Block	No	Block		No	
CH-2	Doan Brook	29	2	7%	Block	No	Block	No	Block	No	Block	No	Block		No	
CH-3	Doan Brook	29	1	3%	Block	No	Block	No	Block	No	Block	No	Block		No	
CH-4	Doan Brook	29	3	10%	Block	No	Block	No	Block	No	Block	No	Block		No	
CH-5	Doan Brook	23	0	0%	Block	No	Block	No	Block	No	Block	No	Block		No	
CH-6	Doan Brook	23	0	0%	Block	No	Block	No	Block	No	Block	No	Block		No	
CH-7	Doan Brook	23	0	0%	Block	No	Block	No	Block	No	Block	No	Block		No	
CH-8	Controlled by Fairmount Blvd Relief Sewer. To be checked during 2018															
CH-9	Doan Brook	29	9	31%	Block	No	Block	No	Block	No	Block	No	Meter (SH)		Yes	
CH-10	Dugway Brook	29	0	0%	Block	No	Block	No	Block	No	Block	No	Block		No	
CH-11	Dugway Brook	29	1	3%	Block	No	Block	No	Block	No	Block	No	Block		No	
CH-12	Dugway Brook	29	8	28%	Block	No	Block	No	Block	No	Block	No	Meter (SH)		Yes	
CH-13	Doan Brook	28	3	11%	Block	No	Block	No	Block	No	Block	No	Block		No	
CH-14	Field check confirmed no SSO connection at this structure															
CH-15	Doan Brook	29	2	7%	Block	No	Block	No	Block	No	Block	No	Meter (SH)		No	
CH-17	Dugway Brook	29	2	7%	Block	No	Block	No	Block	No	Block	No	Block		No	
CH-22	9 Mile Creek	24	1	4%	Block	No	Block	No	Block	No	Block	No	Block		No	
CH-23	Dugway Brook	27	6	22%	Block	No	Block	No	Block	Yes	Block	Yes	Block		No	
CH-24	Dugway Brook	29	1	3%	Block	No	Block	No	Block	No	Block	No	Block		No	
CH-25	Dugway Brook	29	2	7%	Block	No	Block	No	Block	No	Block	No	Meter (SH)		No	
CH-26	Dugway Brook	29	1	3%	Block	No	Block	No	Block	No	Block	No	Block		No	
CH-27	9 Mile Creek	29	5	17%	Block	No	Block	No	Block	No	Block	No	Meter (SE)		No	
CH-28	Dugway Brook	25	3	12%	Block	No	Block	No	Block	No	Block	No	Block		No	
CH-30	Dugway Brook	25	11	44%	Block	No	Block	No	Block	No	Block	No	Meter (SH)		Yes	
CH-32	Doan Brook	29	0	0%	Block	No	Block	No	Block	No	Block	No	Block		No	
CH-33	Doan Brook	28	11	39%	Block	No	Block	No	Block	No	Block	No	Meter (SH)		No	
CH-35	Doan Brook	28	3	11%	Block	No	Block	No	Block	No	Block	No	Block		No	
CH-36	Doan Brook	29	2	7%	Block	No	Block	No	Block	No	Block	No	Block		No	
CH-37	Doan Brook	29	1	3%	Block	No	Block	No	Block	No	Block	No	Block		No	
CH-38	Doan Brook	29	2	7%	Block	No	Block	No	Block	No	Block	No	Block		No	
CH-39	Doan Brook	25	1	4%	Block	No	Block	No	Block	No	Block	No	Block		No	
CH-42	Doan Brook	25	2	8%	Block	No	Block	No	Block	No	Block	No	Block		No	
CH-45	Doan Brook	28	1	4%	Block	No	Block	No	Block	No	Block	No	Meter (SH)		No	
CH-46	Doan Brook	28	0	0%	Block	No	Block	No	Block	No	Block	No	Block		No	
CH-47	Doan Brook	29	1	3%	Block	No	Block	No	Block	No	Block	No	Block		No	
CH-49	Doan Brook	28	0	0%	Block	No	Block	No	Block	No	Block	No	Block		No	
CH-50	Doan Brook	21	4	19%	Block	No	Block	No	Block	No	Block	No	Block		No	
CH-51	Nine Mile	18	2	11%	Block	No	Block	No	Block	No	Block	No	Meter (SE)		No	
CH-52	Dugway Brook	17	0	0%	Block	No	Block	No	Block	No	Block	No	Block		No	
* Starting in October Cleveland Heights Rain Gauge was deactivated, after that Shaker Heights (SH) and South Euclid (SE) rain gauges were used as denoted.																
2017 Real time monitoring of SSOs conducted from September 28, 2017 to Janu																
1. SSO CH-4 activations after Fairmount Blvd Relief Sewer Project believed to be c																

					Event 22		Event 23		Event 24	
					10/9/2017		10/11/2017		11/2/2017	
					1.69 in (SH)	0.97 in/hr (SH)	0.26 in (SH)	0.12 in/hr (SH)	0.62 in (SH)	0.32 in/hr (SH)
					1.61 in (SE)	0.86 in/hr (SE)	0.53 in (SE)	0.38 in/hr (SE)	0.53 in (SE)	0.28 in/hr (SE)
SSO	Receiving Stream	# of Monitored Events	# of Recorded Activations	% of Events with Activation	Tethered Block or Flow Meter	Activation Y/N?	Tethered Block or Flow Meter	Activation Y/N?	Tethered Block or Flow Meter	Activation Y/N?
CH-1	Doan Brook	29	0	0%	Block	No	Block	No	Block	No
CH-2	Doan Brook	29	2	7%	Block	No	Block	No	Block	No
CH-3	Doan Brook	29	1	3%	Block	No	Block	No	Block	No
CH-4	Doan Brook	29	3	10%	Block	No	Block	No	Block	No
CH-5	Doan Brook	23	0	0%	Block	No	Block	No	Block	No
CH-6	Doan Brook	23	0	0%	Block	No	Block	No	Block	No
CH-7	Doan Brook	23	0	0%	Block	No	Block	No	Block	No
CH-8	Controlled by Fairmount Blvd Relief Sewer. To be checked during 2018									
CH-9	Doan Brook	29	9	31%	Meter (SH)	Yes	Meter (SH)	Yes	Meter (SH)	Yes
CH-10	Dugway Brook	29	0	0%	Block	No	Block	No	Block	No
CH-11	Dugway Brook	29	1	3%	Block	No	Block	No	Block	No
CH-12	Dugway Brook	29	8	28%	Meter (SH)	Yes	Meter (SH)	Yes	Meter (SH)	No
CH-13	Doan Brook	28	3	11%	Block	No	Block	No	Block	No
CH-14	Field check confirmed no SSO connection at this structure									
CH-15	Doan Brook	29	2	7%	Meter (SH)	No	Meter (SH)	No	Meter (SH)	No
CH-17	Dugway Brook	29	2	7%	Block	No	Block	No	Block	No
CH-22	9 Mile Creek	24	1	4%	Block	No	Block	No	Block	No
CH-23	Dugway Brook	27	6	22%	Block	No	Block	No	Not Checked	-
CH-24	Dugway Brook	29	1	3%	Block	No	Block	No	Block	No
CH-25	Dugway Brook	29	2	7%	Meter (SH)	No	Meter (SH)	No	Meter (SH)	No
CH-26	Dugway Brook	29	1	3%	Block	No	Block	No	Block	No
CH-27	9 Mile Creek	29	5	17%	Meter (SE)	Yes	Meter (SE)	Yes	Meter (SE)	No
CH-28	Dugway Brook	25	3	12%	Block	No	Block	No	Not Checked	-
CH-30	Dugway Brook	25	11	44%	Meter (SH)	Yes	Meter (SH)	Yes	Meter (SH)	Yes
CH-32	Doan Brook	29	0	0%	Block	No	Block	No	Block	No
CH-33	Doan Brook	28	11	39%	Meter (SH)	Yes	Meter (SH)	Yes	Meter (SH)	Yes
CH-35	Doan Brook	28	3	11%	Block	No	Block	No	Block	No
CH-36	Doan Brook	29	2	7%	Block	No	Block	No	Block	No
CH-37	Doan Brook	29	1	3%	Block	No	Block	No	Block	No
CH-38	Doan Brook	29	2	7%	Block	No	Block	No	Block	No
CH-39	Doan Brook	25	1	4%	Block	No	Block	No	Not Checked	-
CH-42	Doan Brook	25	2	8%	Block	No	Block	No	Not Checked	-
CH-45	Doan Brook	28	1	4%	Meter (SH)	No	Meter (SH)	No	Meter (SH)	No
CH-46	Doan Brook	28	0	0%	Block	No	Block	No	Block	No
CH-47	Doan Brook	29	1	3%	Block	No	Block	No	Block	No
CH-49	Doan Brook	28	0	0%	Block	No	Block	No	Block	No
CH-50	Doan Brook	21	4	19%	Block	No	Block	No	Not Checked	-
CH-51	Nine Mile	18	2	11%	Meter (SE)	Yes	Meter (SE)	Yes	Meter (SE)	No
CH-52	Dugway Brook	17	0	0%	Block	No	Block	No	Block	No
* Starting in October Cleveland Heights Rain Gauge was deactivated, after that Shaker Heights (SH) and South Euclid (SE) rain gauges were used as denoted.										
2017 Real time monitoring of SSOs conducted from September 28, 2017 to Janu										
1. SSO CH-4 activations after Fairmount Blvd Relief Sewer Project believed to be c										

					Event 25		Event 26		Event 27	
					11/3/2017		11/5/2017		11/6/2017	
					0.75 in (SH)	0.42 in/hr (SH)	1.19 in (SH)	0.88 in/hr (SH)	0.43 in (SH)	0.15 in/hr (SH)
					0.55 in (SE)	0.34 in/hr (SE)	1.42 in (SE)	0.98 in/hr (SE)	0.38 in (SE)	0.14 in/hr (SE)
SSO	Receiving Stream	# of Monitored Events	# of Recorded Activations	% of Events with Activation	Tethered Block or Flow Meter	Activation Y/N?	Tethered Block or Flow Meter	Activation Y/N?	Tethered Block or Flow Meter	Activation Y/N?
CH-1	Doan Brook	29	0	0%	Block	No	Block	No	Block	No
CH-2	Doan Brook	29	2	7%	Block	No	Block	No	Block	No
CH-3	Doan Brook	29	1	3%	Block	No	Block	No	Block	No
CH-4	Doan Brook	29	3	10%	Block	No	Block	No	Block	No
CH-5	Doan Brook	23	0	0%	Block	No	Block	No	Block	No
CH-6	Doan Brook	23	0	0%	Block	No	Block	No	Block	No
CH-7	Doan Brook	23	0	0%	Block	No	Block	No	Block	No
CH-8	Controlled by Fairmount Blvd Relief Sewer. To be checked during 2018									
CH-9	Doan Brook	29	9	31%	Meter (SH)	Yes	Meter (SH)	Yes	Meter (SH)	Yes
CH-10	Dugway Brook	29	0	0%	Block	No	Block	No	Block	No
CH-11	Dugway Brook	29	1	3%	Block	No	Block	No	Block	No
CH-12	Dugway Brook	29	8	28%	Meter (SH)	No	Meter (SH)	Yes	Meter (SH)	Yes
CH-13	Doan Brook	28	3	11%	Block	No	Block	No	Block	No
CH-14	Field check confirmed no SSO connection at this structure									
CH-15	Doan Brook	29	2	7%	Meter (SH)	No	Meter (SH)	No	Meter (SH)	No
CH-17	Dugway Brook	29	2	7%	Block	No	Block	No	Block	No
CH-22	9 Mile Creek	24	1	4%	Block	No	Block	No	Block	No
CH-23	Dugway Brook	27	6	22%	Not Checked	-	Meter (SH)	Yes	Meter (SH)	Yes
CH-24	Dugway Brook	29	1	3%	Block	No	Block	No	Block	No
CH-25	Dugway Brook	29	2	7%	Meter (SH)	No	Meter (SH)	No	Meter (SH)	No
CH-26	Dugway Brook	29	1	3%	Block	No	Block	No	Block	No
CH-27	9 Mile Creek	29	5	17%	Meter (SE)	Yes	Meter (SE)	Yes	Meter (SE)	No
CH-28	Dugway Brook	25	3	12%	Not Checked	-	Not Checked	-	Not Checked	-
CH-30	Dugway Brook	25	11	44%	Meter (SH)	Yes	Meter (SH)	Yes	Meter (SH)	Yes
CH-32	Doan Brook	29	0	0%	Block	No	Block	No	Block	No
CH-33	Doan Brook	28	11	39%	Meter (SH)	Yes	Meter (SH)	Yes	Meter (SH)	Yes
CH-35	Doan Brook	28	3	11%	Block	No	Block	No	Block	No
CH-36	Doan Brook	29	2	7%	Block	No	Block	No	Block	No
CH-37	Doan Brook	29	1	3%	Block	No	Block	No	Block	No
CH-38	Doan Brook	29	2	7%	Block	No	Block	No	Block	No
CH-39	Doan Brook	25	1	4%	Not Checked	-	Not Checked	-	Not Checked	-
CH-42	Doan Brook	25	2	8%	Not Checked	-	Not Checked	-	Not Checked	-
CH-45	Doan Brook	28	1	4%	Meter (SH)	No	Meter (SH)	No	Meter (SH)	No
CH-46	Doan Brook	28	0	0%	Block	No	Block	No	Block	No
CH-47	Doan Brook	29	1	3%	Block	No	Block	No	Block	No
CH-49	Doan Brook	28	0	0%	Block	No	Block	No	Block	No
CH-50	Doan Brook	21	4	19%	Not Checked	-	Not Checked	-	Not Checked	-
CH-51	Nine Mile	18	2	11%	Block	No	Block	No	Block	No
CH-52	Dugway Brook	17	0	0%	Block	No	Block	No	Block	No
* Starting in October Cleveland Heights Rain Gauge was deactivated, after that Shaker Heights (SH) and South Euclid (SE) rain gauges were used as denoted.										
2017 Real time monitoring of SSOs conducted from September 28, 2017 to Janu										
1. SSO CH-4 activations after Fairmount Blvd Relief Sewer Project believed to be c										

					Event 28		Event 29	
					11/18/2017		12/5/2017	
					2.88 in (SH)	0.45 in/hr (SH)	0.30 in (SH)	0.09 in/hr (SH)
					2.60 in (SE)	0.38 in/hr (SE)	0.16 in (SE)	0.05 in/hr (SE)
SSO	Receiving Stream	# of Monitored Events	# of Recorded Activations	% of Events with Activation	Tethered Block or Flow Meter	Activation Y/N?	Tethered Block or Flow Meter	Activation Y/N?
CH-1	Doan Brook	29	0	0%	Block	No	Block	No
CH-2	Doan Brook	29	2	7%	Block	No	Block	No
CH-3	Doan Brook	29	1	3%	Block	No	Block	No
CH-4	Doan Brook	29	3	10%	Block	Yes ¹	Block	No
CH-5	Doan Brook	23	0	0%	Block	No	Block	No
CH-6	Doan Brook	23	0	0%	Block	No	Block	No
CH-7	Doan Brook	23	0	0%	Block	No	Block	No
CH-8	Controlled by Fairmount Blvd Relief Sewer. To be checked during 2018							
CH-9	Doan Brook	29	9	31%	Meter (SH)	Yes	Block	No
CH-10	Dugway Brook	29	0	0%	Block	No	Block	No
CH-11	Dugway Brook	29	1	3%	Block	No	Block	No
CH-12	Dugway Brook	29	8	28%	Meter (SH)	Yes	Block	No
CH-13	Doan Brook	28	3	11%	Block	No	No Block	-
CH-14	Field check confirmed no SSO connection at this structure							
CH-15	Doan Brook	29	2	7%	Meter (SH)	No	Block	No
CH-17	Dugway Brook	29	2	7%	Block	No	Block	No
CH-22	9 Mile Creek	24	1	4%	Block	No	Block	No
CH-23	Dugway Brook	27	6	22%	Meter (SH)	Yes	Block	No
CH-24	Dugway Brook	29	1	3%	Block	No	Block	No
CH-25	Dugway Brook	29	2	7%	Meter (SH)	No	Block	No
CH-26	Dugway Brook	29	1	3%	Block	No	Block	No
CH-27	9 Mile Creek	29	5	17%	Meter (SE)	Yes	Block	No
CH-28	Dugway Brook	25	3	12%	Block	Yes	Block	No
CH-30	Dugway Brook	25	11	44%	Meter (SH)	Yes	Block	No
CH-32	Doan Brook	29	0	0%	Block	No	Block	No
CH-33	Doan Brook	28	11	39%	Meter (SH)	Yes	No Block	-
CH-35	Doan Brook	28	3	11%	Block	No	No Block	-
CH-36	Doan Brook	29	2	7%	Block	No	Block	No
CH-37	Doan Brook	29	1	3%	Block	No	Block	No
CH-38	Doan Brook	29	2	7%	Block	No	Block	No
CH-39	Doan Brook	25	1	4%	Block	Yes	Block	No
CH-42	Doan Brook	25	2	8%	Block	Yes	Block	No
CH-45	Doan Brook	28	1	4%	Meter (SH)	No	No Block	-
CH-46	Doan Brook	28	0	0%	Block	No	No Block	-
CH-47	Doan Brook	29	1	3%	Block	No	Block	No
CH-49	Doan Brook	28	0	0%	Block	No	No Block	-
CH-50	Doan Brook	21	4	19%	Block	No	Block	No
CH-51	Nine Mile	18	2	11%	Block	No	Block	No
CH-52	Dugway Brook	17	0	0%	Block	No	No Block	-
* Starting in October Cleveland Heights Rain Gauge was deactivated, after that Shaker Heights (SH) and South Euclid (SE) rain gauges were used as denoted.								
2017 Real time monitoring of SSOs conducted from September 28, 2017 to Janu								
1. SSO CH-4 activations after Fairmount Blvd Relief Sewer Project believed to be c								

Appendix B – 2017 Cleveland Heights Customer Calls

Appendix B. Cleveland Heights 2017 Customer Phone Calls.

HOUSE NUMBER	STREET	DATE 1	COMMENTS	DATE 2	COMMENTS
1043	ALLSTON	6/12/2017	NO ACCESS. ADVISED TO CALL PRIVATE COMPANY.		
1069	ALLSTON	10/20/2017	CLEAN OUT-BLOCKED AT STACK	12/11/2017	NO CHARGE. LINE BROKEN 1-2 FT FROM CLEAN OUT.
1077	ALLSTON	11/13/2017	NO ONE HOME		
1086	ALLSTON	5/26/2017	LINE BLOCKED RAN 3" CUTTER FROM CLEAN OUT TO MAIN. PULLED BACK HEAD OF BROOM AND MASSIVE ROOTS. ADVISED YEARLY MAINTENANCE.		
3360	ALTAMONT	8/21/2017	NEEDS JET	10/19/2017	VIDEOED-SANITARY IS BROKEN 22' FROM THE TEE IN THE STREET
3586	ANTISDALE	7/27/2017	NO ACCESS		
2489	ARLINGTON	5/30/2017	TEST TEE		
2613	ASHTON	8/25/2017	COULD NOT OPEN		
3580	ATHERSTONE	8/1/2017	NO ACCESS		
3666	ATHERSTONE	4/21/2017	RAN 3" CUTTER THROUGH CLEAN OUT. GREASE AND SLUDGE BLOCKAGE- COULD NOT OPEN. SNAKE WAS GETTING STUCK. CALL PRIVATE COMPANY OR PLUMBER. SHOULD HAVE ADVISED YEARLY SERVICE (2011).		
3495	BAINBRIDGE	5/10/2017	RAN 3" CUTTER INTO CLEAN OUT 90FT OUT TO MAIN. PULLED BACK ROOTS. LINE IS OPEN.	5/26/2017	LINE BLOCKED. RAN 3" CUTTER FROM CLEAN OUT TO MAIN. PULLED BACK NOTHING. HIT A FEW BAD SPOTS. ADVISED YEARLY MAINTENANCE.
3513	BAINBRIDGE	6/2/2017	RAN 3" CUTTER THROUGH TEST TEE BOTH WAYS. LINE IS OPEN. ADVISED YEARLY SERVICE.		
3517	BAINBRIDGE	11/16/2017	NO ACCESS		
3559	BAINBRIDGE	5/11/2017		9/29/2017	COULD NOT OPEN
3570	BAINBRIDGE	4/21/2017	RAN 3" CUTTER FROM CLEAN OUT TO MAIN. WIPES AND FEMALE NAPKINS GREASE COULD NOT TOTALLY OPEN. RAN FOR HOURS. CHECK MAIN.		
3603	BAINBRIDGE	6/9/2017	RAN 3" CUTTER THROUGH CLEAN OUT. LINE IS OPEN. ADVISED YEARLY SERVICE.		
3626	BAINBRIDGE	1/12/2017	CANT OPEN CLEAN OUT. TRAPPED AT TEST TEE. CALL PRIVATE COMPANY.		
3747	BAINBRIDGE	10/27/2017	TEST TEE		
3274	BEECHWOOD	10/4/2017	CLEAN OUT		
3314	BEECHWOOD	2/23/2017	BRANCH LINE		
3326	BEECHWOOD	1/13/2017	RAN 3" CUTTER FROM CLEANOUT TO MAIN. PULLED BACK SOME ROOTS. LINE IS OPEN. ADVISED YEARLY MAINTENANCE. HOME OWNER HAS HOMESTEAD- \$50 CHARGE		
3364	BEECHWOOD	3/14/2017	LINE BLOCKED RAN 3" CUTTER FROM CLEAN OUT OPEN LINE. PULLED BACK ROOTS. ADVISED YEARLY MAINTENANCE.		
3384	BEECHWOOD	6/19/2017	NO ACCESS- ADVISED TO INSTALL 6" CLEAN OUT ON BASEMENT FLOOR OR FIND TEES IN YARD.		
2310	BELLFIELD	11/9/2017	TEST TEE IS TRAPPED		
3492	BENDEMEER	4/19/2017	RAN 3" CUTTER INTO TEE. PULLED BACK A LOT OF WIPES AND TOILET PAPER. 80 FT TO HOUSE AND OUT TO MAIN. LINE IS OPEN. ADVISED YEARLY MAINTENANCE.	7/31/2017	OVERTIME, TEST TEE
3496	BENDEMEER	3/9/2017	RAN 3" CUTTER THROUGH TEST TEE TO MAIN AND STACK. LINE IS OPEN. ADVISED YEARLY SERVICE.		
3501	BENDEMEER	1/12/2017		4/20/2017	RAN JET. LINE IS OPEN OUT OF MAIN 50FT.
3555	BENDEMEER	6/15/2017	ROUTINE MAINTENANCE RAN 3" CUTTER FROM TEST TEE TO MAIN. PULLED BACK MINOR ROOTS. RAN TO HOUSE PULLED BACK MINOR ROOTS AND WIPES. ADVISED YEARLY MAINTENANCE. RESIDENT NEEDS TO RAISE TEE.		
3600	BENDEMEER	8/2/2017	TEST TEE		
3626	BENDEMEER	4/10/2017			
3673	BENDEMEER	1/6/2017	RAN JET OUT TO STREET AND HOUSE LINE IS OPEN. FLAT LINE.	2/8/2017	WE RAN JET. LINE APPEARS WITH WATER AT BOTTOM OF TEE. CANNOT GET CAMERA HEAD INSIDE TEE. ADVISED TO CALL PRIVATE COMPANY.
3681	BENDEMEER	4/5/2017	RAN 3" CUTTER THROUGH TEST TEE. LINE IS OPEN. ADVISED YEARLY SERVICE.		
3684	BENDEMEER	8/30/2017	CLEAN OUT		
3768	BENDEMEER	7/7/2017	TEST TEE		
3582	BERKELEY	3/1/2017	NO ACCESS. CALL PRIVATE COMPANY.		
3649	BERKELEY	1/5/2017	RAN 3" CUTTER THROUGH TEST TEE TO MAIN AND STACK. PULLED BACK ROOTS. LINE IS OPEN. ADVISED YEARLY SERVICE. RAN 3" CUTTER ABOUT 75 FT.	3/20/2017	LINE WAS OPEN
3657	BERKELEY	7/6/2017	NO ACCESS		

Appendix B. Cleveland Heights 2017 Customer Phone Calls.

HOUSE NUMBER	STREET	DATE 1	COMMENTS	DATE 2	COMMENTS
3709	BERKELEY	2/2/2017	RAN 3" CUTTER THROUGH TEST TEE IN DRIVEWAY. RAN TO STREET AND HOUSE. LINE IS OPEN. ADVISED YEARLY SERVICE.	4/26/2017	RAN 3" CUTTER THROUGH TEST TEE IN DRIVEWAY. RAN TO STREET AND HOUSE. LINE IS OPEN. ADVISED YEARLY SERVICE.
3729	BERKELEY	3/13/2017	LINE BLOCKED. RAN 3" CUTTER FROM CLEAN OUT IN BASEMENT. RAN SEVERAL TIMES. OPENED LINE ABOUT 60 FEET. PULLED BACK WIPES AND ROOTS. ADVISED YEARLY MAINTENANCE.		
3741	BERKELEY	10/5/2017	CLEAN OUT		
2813	BERKSHIRE	6/26/2017			
2847	BERKSHIRE	10/18/2017	TEST TEE		
2858	BERKSHIRE	6/23/2017			
3014	BERKSHIRE	11/9/2017	COULD NOT OPEN. COULD NOT PASS 50 FT IN CLEAN OUT	11/20/2017	CAMERA-LINE BROKEN AT 38 FEET ON PROPERTY SIDE
958	BEVERLY	6/22/2017	COULD NOT OPEN		
3360	BLANCHE	10/25/2017	RAN JET-LINE IS SLOW		
3373	BLANCHE	3/31/2017	RAN 3" CUTTER FROM TEST TEE TO MAIN AND TO HOUSE. ROOTS AT 75 FT. HOUSE LINE IS OPEN. ADVISED YEARLY MAINTENANCE.	6/26/2017	
3383	BLANCHE	4/3/2017	TEST TEE		
3423	BLANCHE	4/19/2017	RAN 3" CUTTER WITH SMALL SNAKE INTO TEE AND 75FT TO HOUSE THEN TO MAIN IN THE STREET. LINE IS OPEN. LOTS OF ROOTS. ONLY RUN CLEAN IN BASEMENT.		
3424	BLANCHE	3/31/2017	RAN 3" CUTTER FROM TEE TO MAIN. PULLED BACK A LOT OF ROOTS BELLIED AT TEE. WENT TO HOUSE. 85 FT HOUSE LINE IS OPEN ADVISED YEARLY MAINTENANCE.		
3437	BLANCHE	4/25/2017	RAN 3" CUTTER THROUGH TEST TEE. LINE IS NOW OPEN. PULLED BACK ROOTS. ADVISED YEARLY SERVICE.		
3437	BLANCHE	4/26/2017	TEST TEE		
3564	BLANCHE	1/6/2017	HOME OWNER HAD NO ACCESS. ADVISED TO CALL PRIVATE COMPANY BE ADVISED TO PUT CLEAN OUT ON FLOOR.		
3608	BLANCHE	7/31/2017	NO ACCESS		
3619	BLANCHE	4/24/2017	BRANCH LINE		
3644	BLANCHE	6/27/2017			
1004	BLUESTONE	7/7/2017	RAN SNAKE AND JET THROUGH TEST TEE		
3993	BLUESTONE	1/4/2017	NO CLEAN OUT. CALL PRIVATE COMPANY.		
4109	BLUESTONE	9/1/2017	NO ACCESS		
4159	BLUESTONE	6/2/2017	NO ACCESS. ADVISED TO CALL PRIVATE COMPANY.		
2522	BOLTON	1/4/2017	BLOCKED MAIN		
3517	BOYNTON	5/12/2017	CAME BACK TO HOUSE. FOUND TEE SNAKE 75 FT TOWARDS HOUSE AND TO MAIN. LINE IS OPEN.		
1164	BRANDON	11/6/2017	TEST TEE MAINTENANCE		
1317	BURLINGTON	2/7/2017	NO ACCESS CLEAN OUT ON STACK. CANNOT LOCATE TEST TEE. CALL PRIVATE COMPANY. FOUND TEST TEE. RAN 3" CUTTER TO STREET AND HOUSE. LINE IS NOW OPEN. ADVISED YEARLY SERVICE		
1471	BURLINGTON	2/7/2017	PROBLEM UNDER BASEMENT FLOOR- COULD NOT OPEN.		
831	CALEDONIA	6/5/2017	NEEDS TO BE VACOM IN STREET. LINE IS OPEN.		
832	CALEDONIA	7/17/2017	TEST TEE IS BROKEN	11/9/2017	TEST TEE
862	CALEDONIA	9/25/2017	CLEAN OUT		
2555	CANTERBURY	5/30/2017	RAN 3" CUTTER THROUGH TEST TEE. PULLED BACK MINOR ROOTS. LINE IS OPEN. ADVISED YEARLY SERVICE.		
2589	CANTERBURY	3/31/2017	RAN 3" CUTTER FROM TEST TEE TO MAIN AND TO HOUSE 80FT PULLED BACK ROOTS MAIN LINE IS OPEN. ADVISED YEARLY MAINTENANCE.	5/15/2017	RAN 3" CUTTER THROUGH TEST TEE TO MAIN AND HOUSE. LINE IS OPEN. PULLED BACK SOME ROOTS. ADVISED YEARLY SERVICE. RAN TO HOUSE ABOUT 75 FT.
2599	CANTERBURY	5/15/2017	TEST TEE		
2632	CANTERBURY	7/10/2017	ROOTS		
2653	CANTERBURY	6/5/2017	NO ACCESS. HOME OWNER CAN'T LOCATE TEST TEE. WE WILL BE BACK.		
1122	CASTLETON	1/9/2017	RAN 3" CUTTER THROUGH CLEAN OUT. LINE IS OPEN. WAS HERE 3 WEEKS AGO. ADVISED YEARLY SERVICE.		
1126	CASTLETON	1/9/2017	RAN 3" CUTTER FROM TEST TEE TO HOUSE. PULLED BACK ROOTS. HOUSE LINE IS OPEN, ADVISED YEARLY SERVICE.		
1203	CASTLETON	5/9/2017	NO ACCESS ADVISED TO CALL PRIVATE COMPANY.		
12723	CEDAR	7/13/2017	COULD NOT OPEN	9/21/2017	TEST TEE

Appendix B. Cleveland Heights 2017 Customer Phone Calls.

HOUSE NUMBER	STREET	DATE 1	COMMENTS	DATE 2	COMMENTS
12741	CEDAR	3/13/2017	LINE BLOCKED TOWARDS HOUSE. RAN 3" CUTTER FROM TEST TEE TO MAIN. PULLED BACK NOTHING. RAN CUTTER TO HOUSE. OPENED LINE. PULLED BACK MINOR ROOTS. ADVISED YEARLY MAINTENANCE.		
12775	CEDAR	10/6/2017	JET STUCK IN LATERAL TOWARD HOUSE		
12950	CEDAR	8/25/2017	LINE OPEN		
13032	CEDAR	2/21/2017	RAN 3" CUTTER THROUGH CLEAN OUT TO MAIN 100FT. PULLED BACK SOME ROOTS.		
13061	CEDAR	4/20/2017	RAN 3" CUTTER IN BASEMENT CLEAN OUT TO MAIN 75FT. LINE IS OPEN. LOTS OF ROOTS.		
13106	CEDAR	4/21/2017	HAS CLEANOUT ON STACK. CALL PRIVATE COMPANY. PROBLEM WITH BRANCH LINE BY TUBS.		
13110	CEDAR	10/24/2017	NO ACCESS		
3238	CEDARBROOK	11/6/2017	NO ACCESS		
3244	CEDARBROOK	2/13/2017	NO ACCESS. ADVISED TO CALL PRIVATE COMPANY.		
3121	CHELSEA	7/10/2017	COULD NOT OPEN		
3289	CHELSEA	10/16/2017	COULD NOT OPEN		
3383	CHELSEA	5/17/2017	NO ACCESS. ADVISED TO CALL PRIVATE COMPANY.		
3373	CLARENDON	2/1/2017	NO ACCESS		
1166	CLEVELAND HTS	4/5/2017	RAN 3" CUTTER THROUGH CLEAN OUT. LINE IS OPEN. ADVISED YEARLY SERVICE.		
1287	CLEVELAND HTS	1/17/2017	RAN 3" CUTTER THROUGH TEST TEE AND 2" CUTTER THROUGH TEST TEE. PULLED BACK MINOR ROOTS. LINE WAS BLOCKED TOWARDS HOUSE. GOING TO RUN JET. NOT FLOWING ALL THE WAY- HAS GREASE BUILD UP. CALL PRIVATE COMPANY.		
1325	CLEVELAND HTS	11/6/2017	CLEAN OUT MAINTENANCE		
1340	CLEVELAND HTS	5/12/2017	RAN 3" CUTTER FROM CLEAN OUT TO MAIN. LINE IS STUCK 50 FT IN. ADVISED TO CALL PRIVATE COMPANY. HAD TO CUT CABLE LINE. IT IS STILL IN DRAIN. POSSIBLE COLLAPSE OUTSIDE.		
16224	CLEVIDEN	5/8/2017	WIPES FOUND IN CLEAN OUT		
1114	CLIFFORD	8/30/2017	CLEANOUT		
1139	CLIFFORD	5/23/2017	NO ACCESS. ADVISED TO CALL PRIVATE COMPANY. CANNOT FIND TEST TEE. LOCATED TEST TEE. WE WILL COME BACK.		
1525	COMPTON	10/4/2017	TEST TEE		
1634	COMPTON	6/7/2017	RAN 3" CUTTER THROUGH CLEANOUT TO MAIN. LINE IS OPEN. ADVISED YEARLY SERVICE.		
1640	COMPTON	1/6/2017	RAN 3" AND 2" CUTTER FROM TEST TEE TO MAIN AND STACK. PULLED BACK ROOTS. LINE IS OPEN. ADVISED YEARLY SERVICE.		
1717	COMPTON	5/5/2017	RAN 3" CUTTER FROM CLEAN OUT TO MAIN SEVERAL TIMES. PULLED BACK MINOR ROOTS. HOUSE LINE IS OPEN. ADVISED YEARLY MAINTENANCE.	5/23/2017	RAN 3" AND 2" CUTTER SEVERAL TIMES. CANNOT OPEN. ADVISED TO CALL PRIVATE COMPANY.
2921	CORYDON	5/12/2017	RAN 3" CUTTER THOROUGH CLEAN OUT LINE IS OPEN. ADVISED YEARLY SERVICE.	6/2/2017	RAN 3" CUTTER THROUGH CLEAN OUT. LINE IS OPEN. ADVISED YEARLY SERVICE. THERE IS A BRANCH LINE PROBLEM. CALL PRIVATE COMPANY.
1646	COVENTRY	2/7/2017	NO ACCESS		
2257	COVENTRY	9/15/2017	COULD NOT OPEN		
2258	COVENTRY	1/13/2017	TEST TEE		
2310	COVENTRY	8/2/2017	CLEANOUT		
1577	CREST	10/11/2017	TEST TEE		
1596	CREST	8/30/2017	TEST TEE		
1325	CUMBERLAND	11/6/2017	CLEAN OUT -SERVICE		
1655	CUMBERLAND	3/29/2017	RAN 3" CUTTER FROM TEST TEE TO MAIN AND BACK TO HOUSE 70 FEET. LINE IS OPEN ROOTS. ADVISED YEARLY SERVICE.		
3503	CUMMINGS	3/17/2017	TEST TEE EXPOSED. CUSTOMER FLUSHED TOILET. LINE IS OPEN FUTURE MAINTENANCE SUGGESTED. CUSTOMER HAS NO CLEAN OUT INSIDE HOME.		
3507	CUMMINGS	2/24/2017	RAN JET OUT TO STREET 50FT. LINE IS OPEN. ADVISED TO DO YEARLY MAINTENANCE.	3/17/2017	RAN JET OUT TOWARDS MAIN. HOUSE LINE IS OPEN. THERE IS BLOCKAGE AT THE TEE. A TENNIS BALL AS WELL AS TEE CAP STUCK AT THE BOTTOM- CUSTOMER MUST REMOVE ITEMS.
3522	CUMMINGS	5/2/2017	RAN 3" CUTTER FROM CLEANOUT TO MAIN LINE IS OPEN. ROOTS ADVISED YEARLY SERVICE 65FT OUT TO MAIN.		

Appendix B. Cleveland Heights 2017 Customer Phone Calls.

HOUSE NUMBER	STREET	DATE 1	COMMENTS	DATE 2	COMMENTS
2290	DELAWARE	11/27/2017	NO ACCESS		
3237	DELLWOOD	1/18/2017	NO ACCESS. CALL PRIVATE COMPANY.	2/14/2017	NO ACCESS. CALL PRIVATE COMPANY.
3247	DELLWOOD	8/25/2017	VIDEO INSPECTED. SANITARY BROKEN-DIG JOB	9/21/2017	CLEAN OUT
3403	DELLWOOD	5/10/2017	RAN 3" CUTTER INTO TEE TO MAIN AND 75FT TO HOUSE. PULLED BACK SOME ROOTS. LINE IS OPEN.		
3925	DELMORE	11/24/2017	NO ACCESS		
2214	DEMINGTON	10/2/2017	TEST TEE		
3439	DESOTA	11/30/2017	NO ACCESS	12/7/2017	NO ONE HOME
916	DRESDEN	11/22/2017	NO ACCESS		
949	DRESDEN	5/18/2017	HEAVY SLUDGE IN LINE. RAN 3" CUTTER AND JET STILL NO FLOW. ADVISED TO CALL PRIVATE COMPANY.		
2925	E DERBYSHIRE	1/23/2017	SUPERVISOR WILL BE BACK 1/24/17 AT 9:00AM TO CHECK CLEAN OUTS. TONY F.		
2957	E DERBYSHIRE	10/27/2017	TEST TEE		
3227	E FAIRFAX	8/3/2017	LINE BROKEN AT TEE		
3249	E MONMOUTH	5/2/2017	RESCHEDULE CALL		
3301	E MONMOUTH	4/25/2017	NO ACCESS. ADVISED TO CALL PRIVATE COMPANY.		
2854	E OVERLOOK	7/21/2017	NO ACCESS. COULD NOT LOCATE TEST TEES	11/16/2017	TEST TEE
2908	E OVERLOOK	3/12/2017	RAN THROUGH CLEAN OUT 100 FEET. OPENED AT 50 FEET. PULLED BACK ROOTS.	11/22/2017	TEST TEE
3270	E YORKSHIRE	3/20/2017	NO CLEAN OUT. ADVISED TO CALL PRIVATE COMPANY.		
2445	EAST DERBYSHIRE	11/16/2017	TEST TEE		
3153	EAST DERBYSHIRE	9/19/2017	NO ACCESS		
3343	EAST FAIRFAX	9/1/2017	NO ACCESS		
1621	EDDINGTON	10/12/2017	NO ACCESS		
3837	EDENDALE	3/30/2017	NO ACCESS		
2515	EDGEHILL	7/12/2017	TEST TEE		
2933	EDGEHILL	8/11/2017	NO ACCESS		
3007	EDGEHILL	3/14/2017	RESIDENT HAVING PROBLEM WITH KITCHEN SINK.		
3103	EDGEHILL	9/1/2017	NO ACCESS. CLEAN OUT ON STACK.	9/8/2017	TEST TEE
634	EDGERLY	4/12/2017	TELEWISE LINE IS OPEN. A LOT OF ROOTS. ADVISED TO HAVE IT SNAKED OUT.	6/7/2017	RAN 3" CUTTER THROUGH CLEAN OUT. PULLED BACK ROOTS. LINE IS OPEN. ADVISED YEARLY SERVICE.
650	EDGERLY	11/22/2017	TEST TEE.		
3456	EDISON	2/7/2017	CLEAN OUT ON STACK. CALL PRIVATE COMPANY.		
3522	EDISON	2/10/2017	HOME OWNER HAS CLEAN OUT ON STACK. ADVISED TO CALL PRIVATE COMPANY.		
1004	ELBON	10/17/2017	LINE OPEN		
927	ELBON	2/3/2017	HAS CLEANOUT ON FLOOR. HOME OWNER SAID NOT TO RUN LINE BECAUSE LINE IS WIDE OPEN. WASHED SINK DRAIN. ALL GOOD.		
984	ELBON	6/27/2017	NO ACCESS	10/27/2017	BLOCKED MAIN
879	ELOISE	12/19/2017	NO ACCESS		
2940	EUCLID HTS	10/9/2017	WAITING FOR THE JET		
3259	EUCLID HTS	9/11/2017	NO ACCESS		
3414	EUCLID HTS	1/9/2017	NO ACCESS		
3425	EUCLID HTS	9/6/2017	CLEAN OUT		
3443	EUCLID HTS	6/20/2017	RAN 3" CUTTER THROUGH TEST TEE TO STREET AND MAIN. LINE IS OPEN. ADVISED YEARLY SERVICE.		
2632	EXETER	3/20/2017	RAN 3" CUTTER INTO TEE THEN RAN JET OUT TO MAIN IN THE STREET. MAIN IS OPEN AND RUNNING WELL. TEE HAS A BELLY IN IT.		
2865	FAIRFAX	1/5/2017	OPENED WITH JET NEAR CURB FROM TEST TEE.	9/20/2017	TEST TEE
3073	FAIRFAX	11/7/2017	LINE OPEN		
3065	FAIRFAX ROAD	8/8/2017	TEST TEE		
2557	FAIRMOUNT	4/7/2017	TEST TEE WAS FLOWING-PROBLEM WITH BRANCH LINE		
3107	FAIRMOUNT	4/25/2017	RAN 3" CUTTER FROM TEST TEE TO MAIN AND BACK TOWARDS HOUSE. LINE IS OPEN. ADVISED YEARLY SERVICE. PULLED BACK SOME ROOTS.		
3631	FAIRMOUNT	11/13/2017	TEST TEE		
3593	FENLEY	11/25/2017	COULD NOT OPEN		

Appendix B. Cleveland Heights 2017 Customer Phone Calls.

HOUSE NUMBER	STREET	DATE 1	COMMENTS	DATE 2	COMMENTS
1420	FOREST HILLS	5/23/2017	NO ACCESS. ADVISED TO CALL PRIVATE COMPANY.		
16237	FOREST HILLS	10/21/2017	NO ACCESS. ADVISED TO CALL PRIVATE COMPANY OR PLUMBER TO INSTALL 6" CLEANOUT ON FLOOR OR FIND TEST TEE IF THEY WANT CITY TO HELP.		
3777	GLENWOOD	10/6/2017	CLEAN OUT		
3808	GLENWOOD	11/30/2017	TEST TEE		
3813	GLENWOOD	1/3/2017	BRANCH LINE		
2196	GRANDVIEW	1/10/2017	RAN 3" CUTTER THROUGH CLEAN OUT. LINE IS OPEN. ADVISED YEARLY MAINTENANCE.		
2200	GRANDVIEW	1/11/2017	RAN 3" CUTTER TO STREET AND STACK CANNOT GET BY 30 FEET INTO STREET. ALSO RAN JET. LINE IS STILL NOT OPEN. NO CHARGE. ADVISED TO CALL PRIVATE COMPANY.		
2225	GRANDVIEW	11/4/2017	TEST TEE		
2240	GRANDVIEW	2/21/2017	RAN 3" CUTTER THROUGH TEST TEE TO STREET AND HOUSE PULLED BACK ROOTS LINE IS OPEN ADVISED YEARLY SERVICE.	8/24/2017	TEST TEE
2247	GRANDVIEW	7/11/2017	TEST TEE		
2308	GRANDVIEW	12/22/2017	TEST TEE		
1036	GREYTON	6/22/2017			
863	GREYTON	1/23/2017	COULD NOT LOCATE TEST TEE. CALL PRIVATE COMPANY OR PLUMBER.		
888	GREYTON	3/27/2017	NO CLEANOUT. ADVISED TO CALL PRIVATE COMPANY. MAIN IS GOOD.		
2501	GUILFORD	1/31/2017	TEST TEE	1/31/2017	TEST TEE
2859	HAMPSHIRE	12/22/2017	NO ACCESS		
2920	HAMPSHIRE	1/3/2017	NO ACCESS. CALL PRIVATE COMPANY.		
2997	HAMPSHIRE	11/6/2017	CLEAN OUT- MAINTENANCE		
2050	HANOVER	8/25/2017	CLEANOUT		
2197	HARCOURT	4/26/2017	RAN 3" CUTTER THROUGH TEST TEE TO MAIN AND STACK. LINE IS OPEN. ADVISED YEARLY SERVICE.		
2208	HARCOURT	5/31/2017	HOME OWNER HAS NO ACCESS. ADVISED TO CALL PRIVATE COMPANY.		
2211	HARCOURT	8/21/2017	NO ACCESS		
1008	HELMSDALE	4/25/2017	NO ACCESS IN HOUSE. CANNOT FIND TEST TEE. ADVISED TO CALL PRIVATE COMPANY.		
820	HELMSDALE	6/22/2017			
921	HELMSDALE	7/18/2017	TEST TEE		
1249	HEREFORD	4/7/2017	NO CLEAN OUT ON FLOOR CLEAN OUT ON STACK. ADVISED TO CALL PRIVATE COMPANY.	5/2/2017	NO CLEANOUT. ADVISED TO CALL PRIVATE COMPANY.
1620	HILLCREST	4/19/2017	NO CLEAN OUT. ADVISED TO CALL PRIVATE COMPANY.		
1043	HILLSTONE	9/29/2017	CABLE BROKE IN TEST TEE		
1106	HILLSTONE	9/19/2017	NO ACCESS		
1335	INGLEWOOD	5/12/2017	RAN 3" CUTTER THROUGH CLEAN OUT. COULD NOT RUN. CLEAN OUT FULL OF DIRT. ADVISED TO CALL PRIVATE COMPANY.	5/18/2017	RAN 3" CUTTER THROUGH CLEAN OUT. PULLED BACK ROOTS. LOTS OF DIRT AND GRAVEL TOWARDS STACK. ADVISED TO HAVE CAMERA SO WE CAN SEE IF THERE IS A PROBLEM.
2417	KENILWORTH	5/17/2017	NO ACCESS. CALL PRIVATE COMPANY. LOCATED TEST TEE. HOME OWNER DOES NOT WANT IT RAN BECAUSE LINE IS FLOWING NICELY.		
2420	KENILWORTH	5/17/2017	NO ACCESS		
2432	KENILWORTH	5/11/2017	CLEAN OUT ON STACK. CANNOT RUN SNAKE.		
2562	KENILWORTH	6/20/2017	RAN 3: CUTTER THROUGH TEST TEE. CANNOT OPEN ADVISED TO CALL PRIVATE COMPANY.		
1525	KEW	12/18/2017	TEST TEE		
1573	KEW	4/26/2017	FOUND TEST TEE LINE IS TRAPPED. ADVISED TO CALL PRIVATE COMPANY.		
1029	KEYSTONE	1/9/2017	RAN 2" AND 3" CUTTER THROUGH CLEAN OUT. RAN IT ALL THE WAY TO STREET. PULLED BACK ROOTS. LINE IS OPEN. ADVISED YEARLY SERVICE.	3/15/2017	NO ACCESS-ADVISED TO PULL TOILET AND RUN MAIN LINE.
3249	KILDARE	7/5/2017	CLEAN OUT	7/7/2017	NO CHARGE- PLUNGED DRAIN
3284	KILDARE	2/2/2017			
2532	KINGSTON	8/29/2017	TEST TEE		
2533	KINGSTON	4/17/2017	RAN 3" CUTTER INTO CLEAN OUT 95 FT. LINE IS OPEN. PULLED BACK SOME ROOTS. WILL NOT RETURN UNLESS BENCH IS REMOVED OVER CLEAN OUT.		
2549	KINGSTON	7/20/2017	TEST TEE		
2553	KINGSTON	8/24/2017	POSSIBLE BROKEN PIPE		

Appendix B. Cleveland Heights 2017 Customer Phone Calls.

HOUSE NUMBER	STREET	DATE 1	COMMENTS	DATE 2	COMMENTS
2568	KINGSTON	3/29/2017	RAN 3" CUTTER FROM TEE TO MAIN AND TO HOUSE 75FT. LINE IS OPEN. PULLED BACK SOME ROOTS. ADVISED YEARLY SERVICE.		
2593	KINGSTON	5/2/2017	TEST TEE-ADVISE YEARLY SERVICE	1/20/2017	TEST TEE
2084	LAMBERTON	12/4/2017	CLEAN OUT		
2102	LAMBERTON	1/5/2017	RAN 3" CUTTER FROM CLEAN OUT TO STREET. LINE IS OPEN. ADVISED MAINTENANCE.		
2125	LAMBERTON	8/3/2017	TEST TEE COULD NOT OPEN TO THE HOUSE.		
2140	LAMBERTON	6/16/2017	HERE FROM 1:40-2:05. NOBODY HOME. CALL TO RESCHEDULE.		
2197	LEE	4/18/2017	MAIN WAS OPEN AND RUNNING WELL.		
2431	LEE	8/3/2017	WARRANTY		
3415	LOWENSDALE	10/23/2017	NO ACCESS. COULD NOT LOCATE TEST TEES		
1425	LYNN PARK	3/16/2017	APPEARS MAIN LINE IS OPEN. RAN 3" CUTTER FROM TEST TEE TO MAIN AND BACK TOWARDS HOUSE 100 FT. DRAINS ARE STILL BLOCKED. POSSIBLE BRANCH.		
1634	MAPLE	9/11/2017	NO ACCESS		
3740	MAYFIELD	8/11/2017	COULD NOT CAMERA BAD BEND		
3825	MAYFIELD	9/20/2017	BRANCH LINE		
3879	MAYFIELD	5/17/2017	CANNOT RUN. DAMAGE TO TEST TEE. MUST GET FIXED.		
3001	MEADOWBROOK	4/4/2017	FOUND TEST TEE. CANNOT GET IT OFF. HAVE HOME OWNER GET IT OFF. WE WILL COME BACK AND RUN IT. COVER FROM TEST TEE HAS BEEN REMOVED.	5/5/2017	RAN 3" CUTTER THROUGH TEST TEE. PULLED BACK ROOTS. RAN BOTH WAYS. LINE IS OPEN. ADVISED YEARLY SERVICE.
3141	MEADOWBROOK	11/20/2017	CLEAN OUT		
3151	MEADOWBROOK	5/20/2017	COULD NOT OPEN. LINE BROKEN ON TREE LAWN.		
3305	MEADOWBROOK	11/2/2017	CLEAN OUT		
3312	MEADOWBROOK	6/15/2017	ROUTINE MAINTENANCE. RAN 3" CUTTER FROM TEST TEE TO MAIN. PULLED BACK MINOR ROOTS RAN TO HOUSE. PULLED BACK NOTHING. ADVISED YEARLY MAINTENANCE.		
3335	MEADOWBROOK	2/13/2017	RAN 3" CUTTER THROUGH CLEAN OUT. LINE IS OPEN. ADVISED YEARLY SERVICE. PULLED BACK MINOR ROOTS.		
3354	MEADOWBROOK	8/10/2017	TEST TEE		
3388	MEADOWBROOK	4/27/2017	RAN 3" CUTTER THROUGH TEST TEE BOTH WAYS. LINE IS OPEN. ADVISED YEARLY SERVICE. POSSIBLE BELLY IN LINE.		
3444	MEADOWBROOK	3/1/2017	RAN 3" CUTTER THROUGH TEST TEE PULLED BACK MINOR ROOTS. LINE WAS BLOCKED TOWARDS HOUSE. ADVISED YEARLY SERVICE.	4/6/2017	RAN 3" CUTTER THOUGH TEST TEE. LINE WAS BLOCKED TOWARDS HOUSE. LINE IS NOW OPEN. ADVISED TO HAVE CAMERA JOB TO SEE IF PEOBLEM IS BROKEN LINE.
3515	MEADOWBROOK	10/30/2017	TEST TEE		
3539	MEADOWBROOK	1/12/2017	RAN 2" AND 3" CUTTER. BASEMENT FULL WITH WATER. LINE OPENED. PULLED BACK MAJOR ROOTS.	2/7/2017	WARRANTY, CLEAN OUT
3548	MEADOWBROOK	5/24/2017	RAN 3" CUTTER THROUGH TEST TEE TO MAIN AND STACK LINE IS OPEN. ADVISED YEARLY SERVICE.		
2976	MONMOUTH	2/15/2017	RAN 3" CUTTER FROM CLEAN OUT TO MAIN. LINE IS OPEN PULLED BACK MINOR ROOTS. ADVISED YEARLY SERVICE.		
3373	MONMOUTH	11/27/2017	TEST TEE		
851	MONTFORD	8/29/2017	COULD NOT OPEN. BROKEN, NEEDS JET		
868	MONTFORD	9/20/2017	TEST TEE-JET	4/28/2017	RAN JET TO MAIN AND STACK THEN RAN 3" CUTTER SNAKE BOTH WAYS. LINE IS
3020	MONTICELLO	10/16/2017	TEST TEE		
3123	MONTICELLO	7/19/2017	TEST TEE		
3361	MONTICELLO	10/9/2017	NO ACCESS		
3414	MONTICELLO	9/19/2017	TEST TEE		
3454	MONTICELLO	5/31/2017	RAN 3 " CUTTER THROUGH TEST TEE TO MAIN AND STACK. LINE IS OPEN. ADVISED YEARLY SERVICE.		
3455	MONTICELLO	7/10/2017	TEST TEE		
3527	MONTICELLO	11/7/2017	TEST TEE		
3561	MONTICELLO	11/30/2017	CLEAN OUT-YEARLY SERVICE		
3868	MONTICELLO	2/21/2017	RAN 3" CUTTER FROM CLEANOUT TO. NEED TO REPAIR CLEAN OUT. IT HAS A HOLE IN IT.	4/4/2017	RAN 3" CUTTER THROUGH CLEAN OUT. SNAKE BROKE LINE. NEEDS TO BE FIXED. WILL NOT RETURN UNTIL LINE IS FIXED.
3970	MONTICELLO	12/14/2017	NO ONE HOME		

Appendix B. Cleveland Heights 2017 Customer Phone Calls.

HOUSE NUMBER	STREET	DATE 1	COMMENTS	DATE 2	COMMENTS
4033	MONTICELLO	10/6/2017	NO ACCESS		
4063	MONTICELLO	9/22/2017	BROKEN LATERAL STUCK IN LINE-WILL DIG		
3683	MT LAUREL	7/12/2017	CLEAN OUT		
1130	MT VERNON	3/22/2017	BRANCH LINE PROBLEM. CALL PRIVATE COMPANY. GALVANIZED PIPE UNDER SINK.		
2288	NOBLE	8/7/2017	CLEAN OUT	8/22/2017	WATER COMING OUT OF THE WALL
2440	NOBLE	12/11/2017	NO ACCESS. DO NOT DO APARTMENT BUILDING.		
2576	NORFOLK	4/12/2017	CLEAN OUT ON STACK. ADVISED TO CALL PRIVATE COMPANY. NOTE: OWNER IS HAVING A CONTRACTOR INTSTALL A CLEAN OUT ON 04/24/17.		
2517	NORTH PARK	11/6/2017	CLEAN OUT - MAINTENANCE		
2829	NORTH PARK	7/28/2017	LINE OPEN. VIDEO INSPECTED FROM CLEAN OUT 93 FT UNDER WATER.		
3355	NORTH PARK	1/25/2017	NO ACCESS		
3983	NORTHAMPTON	4/25/2017	COULD NOT OPEN	5/19/2017	COULD NOT OPEN
3500	NORTHCLIFFE	7/13/2017	CLEAN OUT		
3658	NORTHVALE	1/17/2017	COULD NOT OPEN CLEAN OUT		
3186	OAK	1/20/2017	NO ACCESS		
3201	OAK	10/13/2017	CLEAN OUT		
3227	OAK	2/10/2017	TEST TEE		
1286	OAKRIDGE	1/4/2017	RAN 3" CUTTER AND JET TO HOUSE AND MAIN. CANNOT OPEN. CALL PRIVATE COMPANY.		
1300	OAKRIDGE	9/7/2017	NO ONE HOME		
1311	OAKRIDGE	9/7/2017	TEST TEE		
1401	OAKRIDGE	2/8/2017	BLOCKED UNDER SIDEWALK		
3919	ORCHARD	7/14/2017	STORM LINE BLOCKED		
3978	ORCHARD	7/10/2017	WILL NOT RETURN UNLESS CLEAN OUT IS ON THE FLOOR		
3317	ORMOND	12/19/2017	TEST TEE		
1468	PARKHILL	4/21/2017	SAME AS ABOVE. TEE IS TRAPPED. REMOVED TRAP HAS CLEAN OUT ON STACK.		
1525	PARKHILL	5/8/2017	NO ACCESS. ADVISED TO CALL PRIVATE COMPANY.		
1542	PARKHILL	5/23/2017	NO ACCESS. ADVISED TO CALL PRIVATE COMPANY.		
1904	PARKWAY	11/14/2017	CLEANOUT		
1001	PEMBROOK	1/21/2017	RAN 3" CUTTER THOROUGH CLEAN OUT. PULLED BACK ROOTS. RAN SNAKE 100 FEET. ADVISED TO DO IT ONCE A YEAR. LINE IS OPEN.		
1072	PEMBROOK	6/8/2017	RAN 3" CUTTER THROUGH TEST TEE TO MAIN. PULLED BACK WIPES. CANNOT OPEN.		
962	PEMBROOK	10/20/2017	TEST TEE		
2418	PRINCETON	4/12/2017	RAN JET, OPENED AT 50 FT	11/7/2017	RAN JET THROUGH TEST TEE
2583	PRINCETON	11/2/2017	CLEAN OUT		
2588	PRINCETON	4/6/2017	TEST TEE		
2598	PRINCETON	8/3/2017	TEST TEE		
2608	PRINCETON	5/31/2017	RAN 3" CUTTER AND 2" CUTTER THROUGH TEST TEE TO MAIN AND STACK. PULLED BACK MANY ROOTS. CANNOT OPEN. RAN IT MULTIPLE TIMES. ADVISED TO CALL PRIVATE COMPANY.		
850	QUARRY	6/2/2017	CANNOT OPEN CLEAN OUT. CALL BACK TO RESCHEDULE WHEN IT'S OPEN.		
902	QUARRY	10/25/2017	COULD NOT OPEN. CLEAN OUT/BRANCH LINE PROBLEM.		
2373	QUEENSTON	5/10/2017	RAN 3" CUTTER IN TEE HEAVY ROOTS IN TO HOUSE 75" AND TO MAIN. LINE IS OPEN.		
2445	QUEENSTON	5/1/2017	RAN 3" CUTTER THOROUGH CLEAN OUT PULLED BACK ROOTS. LINE IS OPEN. ADVISED YEARLY SERVICE.		
2473	QUEENSTON	5/24/2017	CANNOT LOCATE TEST TEE. CLEAN OUT ON FLOOR CEMENTED IN. ADVISED TO FIND TEST TEE OR CALL PRIVATE COMPANY.		
2498	QUEENSTON	1/3/2017	RAN 3" CUTTER THROUGH TEST TEE BOTH WAYS. LINE IS OPEN. PULLED BACK ROOTS MINOR ROOTS. ADVISED YEARLY SERVICE.		
2582	QUEENSTON	6/6/2017	RAN 3" CUTTER THROUGH CLEAN OUT TO MAIN. PULLED BACK ROOTS. LINE IS OPEN. ADVISED YEARLY SERVICE.		
2393	QUEENSTONE	1/13/2017	PRIVATE COMPANY WAS THERE.		
1760	RADNOR	9/26/2017	NO ACCESS		
1763	RADNOR	10/30/2017	BLOCKED		

Appendix B. Cleveland Heights 2017 Customer Phone Calls.

HOUSE NUMBER	STREET	DATE 1	COMMENTS	DATE 2	COMMENTS
3541	RANDOLPH	7/7/2017	TEST TEE		
3605	RANDOLPH	11/16/2017	NO ONE HOME		
2100	RENROCK	11/22/2017	NO ACCESS	12/7/2017	COULD NOT OPEN
1976	REVERE	7/11/2017	TEST TEE		
2021	REVERE	5/18/2017	NO ACCESS. CANNOT LOCATE TEST TEE. ADVISED TO CALL PRIVATE COMPANY.		
2022	REVERE	1/18/2017	NO ACCESS C/O ON STACK. CALL PRIVATE COMPANY.		
1039	ROANOKE	6/26/2017			
1068	ROANOKE	9/1/2017	COULD NOT OPEN		
847	ROANOKE	1/27/2017	RAN 3" CUTTER THROUGH CLEAN OUT. LINE IS OPEN. ADVISED YEARLY SERVICE.		
925	ROANOKE	9/24/2017	TEST TEE	12/14/2017	WARRANTY
926	ROANOKE	10/9/2017	WARRANTY		
971	ROANOKE	4/24/2017	TEST TEE		
2368	ROXBORO	6/1/2017	RAN 3" CUTTER FROM TEST TEE TO MAIN 50FT AND 85FT TO HOUSE. LINE IS OPEN. ADVISED YEARLY SERVICE.		
3318	RUMSON	4/26/2017	TEST TEE IS BROKEN AT THE BOTTOM	6/13/2017	WARRANTY. MULTIPLE ROOTS IN TEST TEE.
3618	RUNNYMEDE	6/5/2017	RAN 3" CUTTER THROUGH CLEAN OUT TO MAIN. LINE IS OPEN. PULLED BACK ROOTS AND TAMPONS. ADVISED YEARLY SERVICE.		
3647	RUNNYMEDE	3/31/2017	NO ACCESS. CLEANOUT ON STACK.		
3674	RUNNYMEDE	3/31/2017	HAS CLEANOUT ON STACK. ADVISED TO CALL PRIVATE COMPANY.		
1012	RUSHLEIGH	7/28/2017	NO ACCESS. CLEAN OUT ON STACK.		
1450	RYDALMOUNT	4/18/2017	RAN 3" CUTTER INTO CLEAN OUT 75FT TO MAIN. LOTS OF ROOTS. ADVISED YEARLY SERVICE.		
1480	RYDALMOUNT	11/7/2017	NEEDS TO GET BASEMENT PUMPED OUT	11/13/2017	CLEAN OUT
1549	RYDALMOUNT	7/26/2017	CLEAN OUT		
1594	RYDALMOUNT	7/20/2017	CLEAN OUT		
950	S BELVOIR	5/8/2017	RAN 3" CUTTER THROUGH CLEAN OUT TO MAIN SEVERAL TIMES. PULLED BACK		
1912	S COMPTON	3/10/2017	RAN 3" CUTTER FROM TEST TEE TO MAIN AND STACK. LINE IS OPEN. ADVISED TO SNAKE ONCE A YEAR. POSSIBLE BELLY OR DAMAGE 40 FT IN.	3/22/2017	LINE IS DAMAGED AT TEE. HAS MULTIPLE CRACKS AT TEE. LINE SHOULD BE INSPECTED WITH CAMERA AND REPAIRED BEFORE WE RETURN.
2177	S OVERLOOK	5/10/2017	NO ACCESS		
2190	S OVERLOOK	5/25/2017	RAN 3" CUTTER THROUGH TEST TEE TO MAIN AND STACK. PULLED BACK ROOTS. LINE IS OPEN ADVISED YEARLY SERVICE	6/26/2017	
1890	S TAYLOR	5/3/2017	BUSINESS ADVISED TO CALL CONTRACTOR.		
2393	S TAYLOR	1/26/2017	RAN 3" CUTTER THROUGH TEST TEE. KEPT GETTING STUCK ABOUT 40 FEET IN. ADVISED TO CALL PRIVATE COMPANY.		
2673	SCARBOROUGH	10/26/2017	NO ACCESS		
3006	SCARBOROUGH	9/29/2017	CLEAN OUT		
3549	SCARBOROUGH	4/10/2017	RAN 3" CUTTER THROUGH TEST TEE. LINE IS CLEAR. BRANCH LINE PROBLEM WITH TOILET ON 1ST FLOOR. ADVISED TO CALL PRIVATE COMPANY.		
3363	SEATON	12/18/2017	TEST TEE		
3369	SEATON	1/20/2017	PROBLEM WITH DRIVEWAY DRAIN. NOT A SEWER PROBLEM.		
3382	SEATON	5/26/2017	BRANCH LINE OPEN. ADVISED TO CALL PRIVATE COMPANY.		
3399	SEATON	7/6/2017	TEST TEE		
1005	SELWYN	4/27/2017	RAN 3" CUTTER THROUGH TEST TEE TO MAIN AND STACK. LINE IS WIDE OPEN NOW. ADVISED YEARLY SERVICE.		
1031	SELWYN	10/17/2017	BROKE TEST TEE		
949	SELWYN	7/13/2017	CLEAN OUT	9/14/2017	CLEAN OUT
3471	SEVERN	5/26/2017	PREVENTATIVE MAINTENANCE: RAN 3" CUTTER FROM TEST TEE TO MAIN. PULLED BACK NOTHING. RAN CUTTER TO HOUSE. PULLED BACK MINOR ROOT. ADVISED YEARLY MAINTENANCE.	9/29/2017	TEST TEE
3644	SEVERN	3/24/2017	RAN 3" CUTTER FROM TEST TEE TO MAIN SOFT AND TO HOUSE. SOME ROOTS AT 75 FT. ADVISED YEARLY MAINTENANCE. MAIN LINE IS OPEN. BRANCH LINE PROBLEM. CALL PRIVATE COMPANY.		
3647	SEVERN	8/20/2017	TEST TEE		
3703	SEVERN	7/14/2017	STORM ISSUE		

Appendix B. Cleveland Heights 2017 Customer Phone Calls.

HOUSE NUMBER	STREET	DATE 1	COMMENTS	DATE 2	COMMENTS
3732	SEVERN	3/27/2017	TEST TEE		
3766	SEVERN	5/9/2017	HOME OWNER HAS BROKEN TEE. NEEDS TO BE FIXED BEFORE WE RETURN.		
2645	SHAKER	5/5/2017	LINE OPEN	5/4/2017	LINE IS NOT BLOCKED. HOME OWNER SAID NOT TO RUN, MAYBE A STORM LINE PROBLEM
1100	SHANNON	2/8/2017	TEST TEE		
3475	SHANNON	3/3/2017	RAN 3" CUTTER TOWARDS MAIN IN STREET AND BACK TOWARDS HOUSE.	3/6/2017	BLOCKED MAIN
3553	SHANNON	11/30/2017	CAMERA TEST TEE		
3564	SHANNON	9/14/2017	NO CHARGE	9/19/2017	CAMERA-NO CHARGE
3595	SHANNON	1/5/2017	TEST TEE ON LEFT		
3601	SHANNON	4/3/2017	RAN 3" CUTTER FROM TEST TEE TO HOUSE AND TO STREET. PULLED BACK A LOT OF ROOTS 40 FT IN TO THE HOUSE. LINE IS OPEN. ADVISED YEARLY MAINTENANCE.		
3637	SHANNON	4/3/2017	RAN 3" CUTTER FROM TEST TEE PULLED BACK ROOTS 70 FT INTO HOUSE AND OUT TO STREET. TEE NEEDS TO BE RAISED UP OR WE WILL NOT RETURN. ADVISED YEARLY MAINTENANCE.		
3643	SHANNON	12/4/2017	TEST TEE		
3649	SHANNON	2/8/2017	RAN 3" CUTTER THROUGH TEST TEE. RAN TO MAIN AND STACK. LINE IS WIDE OPEN. ADVISED YEARLY SERVICE. PULLED BACK ROOTS AND A FEW WIPES.		
3653	SHANNON	1/4/2017	RAN JET AND 3" CUTTER. STILL CANNOT OPEN LINE. CALL PRIVATE COMPANY (PULLED BACK A LOT OF WIPES).	4/4/2017	RAN 3" CUTTER SEVERAL TIMES. BEEN HERE OFTEN. CANNOT OPEN- MAY HAVE A BREAK IN PIPE. ADVISED TO BE INSPECTED WITH CAMERA. PULLED OUT TAMPON AND
3724	SHANNON	1/12/2017	COULD NOT OPEN. TEST TEE	1/17/2017	BLOCKED MAIN
3730	SHANNON	2/13/2017	RAN 3" CUTTER THROUGH TEST TEE. TEE IS CRACKED AT BOTTOM. GOING TO RUN 3" SNAKE THROUGH CLEAN OUT.	10/23/2017	RAN BOTH HOSES FROM JET TOWARDS MAIN. LATERAL IS BELIED IN TREELAWN. HOUSE HAS BEEN TELEVIEWED SEVERAL TIMES. HOUSE LINE IS OPEN. *ALWAYS USE JET AT THIS ADDRESS*
3743	SHANNON	1/17/2017	RAN 3" CUTTER THROUGH TEST TEE. IT WAS BLOCKED TOWARDS THE STREET. LINE IS OPEN. ADVISED YEARLY SERVICE.		
3757	SHANNON	4/21/2017	RAN 3" CUTTER FROM TEST TEE TO MAIN & BACK TOWARDS HOUSE. LINE IS OPEN. PULLED BACK SOME ROOTS.		
17420	SHELBOURNE	10/18/2017	PIECE OF CLAY MISSING IN THE TEE		
3305	SILSBY	6/30/2017	NO ACCESS		
2257	SOUTH OVERLOOK	5/9/2017	RAN LATERAL AND TELEVIEWED. LINE IN GOOD SHAPE.		
1564	SOUTH TAYLOR	7/5/2017	TEST TEE	12/21/2017	TEST TEE
2640	SOUTH TAYLOR	9/20/2017	NO ACCESS		
3390	SPANGLER	1/18/2017	NO ACCESS. CALL PRIVATE COMPANY.		
3529	ST ALBANS	8/29/2017	COULD NOT OPEN. RAN THROUGH C/O ON STACK. BROKE CABLE		
1904	STAUNTON	3/15/2017	LINE BLOCKED. RAN 3" CUTTER FROM CLEAN OUT. HEAVY SLUDGE. RAN SEVERAL TIMES. FINALLY OPENED LINE. BROUGHT BACK WIPES. ADVISED YEARLY MAINTENANCE.		
1908	STAUNTON	2/22/2017	RAN 3" CUTTER BOTH WAYS THROUGH TEST TEE MULTIPLE TIMES. PULLED BACK ROOTS. LINE WILL NOT OPEN. ADVISED TO CALL PRIVATE COMPANY.	4/13/2017	RAN 3" CUTTER BOTH WAYS INTO TEST TEE. SOME ROOTS OBSERVED 70 FT INTO HOUSE. LINE IS OPEN.
1976	STAUNTON	3/17/2017	RAN 3" CUTTER THROUGH TEST TEE. PULLED BACK WIPES HAIR LINE IS OPEN.		
2208	STILLMAN	7/17/2017	TEST TEE		
14299	SUPERIOR	1/13/2017	RAN 3" CUTTER INTO TEE RAN 50FT OUT TO MAIN. PULLED BACK ROOTS. HOUSE LINE IS OPEN.		
14506	SUPERIOR	5/1/2017	RAN 3" CUTTER AND JET INTO TEE. COULD NOT OPEN. ABOUT 6FT FROM TEE IS A BAD SPOT.		
14650	SUPERIOR	8/11/2017	NO ACCESS		
3379	SUPERIOR PK	5/31/2017	RAN 3" CUTTER THROUGH CLEAN OUT TO MAIN. ROUTINE MAINTENANCE. ADVISED YEARLY SERVICE.		
3207	SYCAMORE	7/5/2017	CLEAN OUT ON STACK		
3244	SYCAMORE	10/16/2017	CLEAN OUT		
3390	SYLVANHURST	3/22/2017	LINE WAS BLOCKED AT TEE. RAN 3" CUTTER TO STREET AND BACK TO HOUSE. LINE IS OPEN. ADVISED YEARLY MAINTENANCE.		
1243	SYLVANIA	11/30/2017	NO ACCESS		
3251	TULLAMORE	1/4/2017	NO CLEAN OUT. ADVISED TO CALL PRIVATE COMPANY.		

Appendix B. Cleveland Heights 2017 Customer Phone Calls.

HOUSE NUMBER	STREET	DATE 1	COMMENTS	DATE 2	COMMENTS
3266	TULLAMORE	3/23/2017	ALL UNDER WATER. COULD NOT PASS 42 FT. ADVISED CAMERA INSPECTION	4/6/2017	2 FEET OF WATER IN LINE. ADVISED TO PUMP OUT WATER AND WE WILL RETURN
3270	TULLAMORE	4/26/2017	RAN 3" CUTTER ABOUT 90FT. LINE WAS BLOCKED. PULLED BACK ROOTS. LINE IS NOW OPEN. ADVISED YEARLY MAINTENANCE.		
3328	TULLAMORE	3/1/2017	NO ACCESS. HOME OWNER ADVISED TO CALL PRIVATE COMPANY.		
3336	TULLAMORE	7/20/2017	COULD NOT OPEN. WATER LINE IS RUNNING THROUGH TEST TEE.		
3424	TULLAMORE	7/12/2017	NO ONE HOME		
1361	VANDEMAR	10/13/2017	TEST TEE		
2989	WASHINGTON	2/7/2017	RAN 3" AND 2" THROUGH TEST TEE TO MAIN THEN TO HOUSE. COULD NOT OPEN. ADVISED TO CALL PRIVATE COMPANY. BLOCKED 60' FROM TEST TEE TO HOUSE.		
3015	WASHINGTON	1/13/2017	NO CLEAN OUT IN THE FLOOR. NO TEST TEES. CALL PRIVATE CONTRACTOR.		
3018	WASHINGTON	3/24/2017	TEST TEE		
3057	WASHINGTON	6/19/2017	ROUTINE MAINTENANCE-RAN 3" CUTTER FROM CLEAN OUT IN BASEMENT TO MAIN. 100FT PULLED BACK ROOTS. ADVISED YEARLY MAINTENANCE.		
3131	WASHINGTON	3/20/2017	NO CLEAN OUT. ADVISED TO CALL PRIVATE COMPANY.		
3429	WASHINGTON	8/29/2017	COULD NOT OPEN		
3444	WASHINGTON	8/21/2017	ROOTS-ADVISED 6 MONTH CLEANING		
3575	WASHINGTON	5/17/2017	RAN 3" CUTTER AND JET. CANNOT OPEN. PULLED OUT LOTS OF ROOTS. ADVISED TO CALL PRIVATE COMPANY.	9/18/2017	TEST TEE
3583	WASHINGTON	6/23/2017			
3605	WASHINGTON	11/4/2017	NO ACCESS		
1389	WESTOVER	2/8/2017	RAN 3" CUTTER THROUGH TEST TEE LINE WAS BLOACKED TOWARDS HOUSE. LINE IS OPEN. ADVISED YEARLY SERVICE.		
974	WHITBY	11/20/2017	RAN JET		
3201	WHITETHORN	1/31/2017	NEED TO RESCHEDULE. GOT STUCK IN SNOW IN DRIVEWAY.		
1495	WILMAR	4/5/2017	RAN 3" CUTTER THROUGH TEST TEE TO MAIN AND STACK. LINE WAS BLOCKED TOWARDS HOUSE. LINE IS WIDE OPEN. ADVISED YEARLY SERVICE.		
3276	WINSFORD	1/5/2017	HOME OWNER HAD NO ACCESS ADVISED TO CALL PRIVATE COMPANY.	4/13/2017	RAN 3" CUTTER BOTH WAYS IN TEST TEE MULTIPLE TIMES. PULLED BACK A LOT OF
3382	WINSFORD	10/20/2017	CLEAN OUT		
3418	WINSFORD	5/30/2017	RAN 3" CUTTER FROM CLEAN OUT TO MAIN. LINE IS OPEN. ADVISED YEARLY SERVICE.	11/9/2017	COULD NOT OPEN. PIPE BROKEN AT 46 FT.
1618	WOOD	5/26/2017	LINE BLOCKED-NO ACCESS. ADVISED TO CALL PRIVATE COMPANY TO SNAKE MAIN LINE.		
1694	WOOD	1/13/2017	HOME OWNER HAS NO ACCESS. ADVISED TO CALL PRIVATE COMPANY.		
1716	WOOD	1/11/2017	CANNOT LOCATE TEST TEE. NO ACCESS IN BASEMENT. ADVISED TO CALL PRIVATE COMPANY. 01/12/17 - OWNER STATES HE LOCATED THE TEST TEES.		
2453	WOODMERE	4/4/2017	NO ACCESS IN THE HOUSE.		
3591	WOODRIDGE	7/11/2017	CLEAN OUT	7/17/2017	WARRANTY
3523	WOODVIEW	12/7/2017	NO ACCESS		
810	WOODVIEW	6/21/2017	CAP CEMENTED IN. OWNER HAS TO OPEN. WILL RESCHEDULE.		
927	WOODVIEW	1/20/2017	CLEAN OUT IN BAD SPOT. CALL PRIVATE COMPANY.	1/23/2017	NOT AT HOME. RAN 3" CUTTER THROUGH CLEAN OUT. PULLED BACK ROOTS. ADVISED YEARLY SERVICE. LINE WILL NOT OPEN. RAN 100FT 3 TIMES. ADVISED TO CALL PRIVATE COMPANY.
1100	YELLOWSTONE	5/10/2017	BRANCH LINE PROBLEM. RAN 3" CUTTER TO HOUSE AND TO MAIN 100 FT. MAIN LINE APPEARS TO BE OPEN.		
2975	YORKSHIRE	10/9/2017	TEST TEE		
2978	YORKSHIRE	12/11/2017	LINE OPEN		
2983	YORKSHIRE	1/3/2017	RAN 3" CUTTER THROUGH TEST TEE AND 2" CUTTER PULLED BACK ROOTS. LINE IS OPEN. ADVISED YEARLY MAINTENANCE.		
3135	YORKSHIRE	7/12/2017	NO ACCESS		